



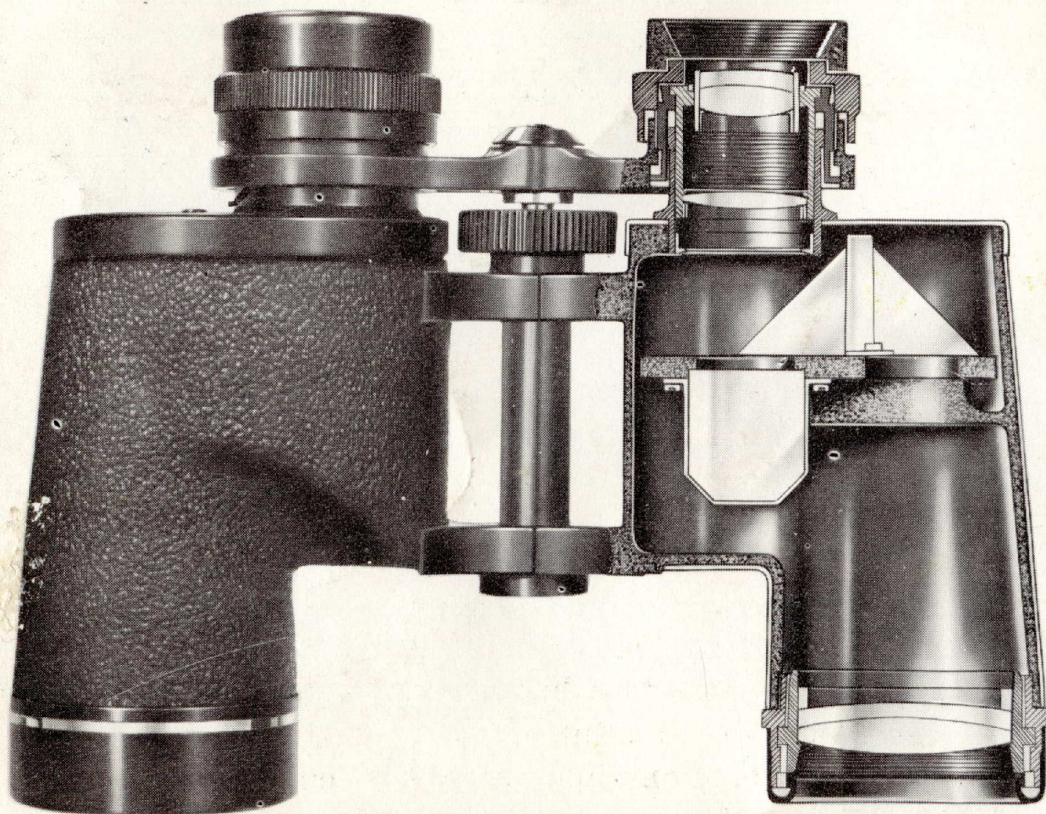
Noosa

ASAHI

PENTAX

**Prism Binoculars
with
Coated
Interference
Filter**

MB



A binocular, like a sports car . . . or a good stopwatch . . . or a set of matched derringers, is fun to own and use. A good one isn't cheap, but neither is a top quality fly rod. You buy a binocular once, and you're set for life—and then some. In fact, a good binocular is just about the least perishable thing you can own, short of a cast iron paperweight. Unless you drop it or run over it, a quality binocular will last indefinitely, and unlike most precision instruments, it requires no maintenance or adjustment whatever.

Our Asahi Pentax Prism Binoculars are superb glasses. They're made by the same craftsmen who make Asahi Pentax single-lens reflex cameras and lenses, and they're built to exceptionally high standards, both optically and mechanically. Asahi Pentax Prism Binoculars are *new*, and while not radical in design, they represent advanced thinking on what quality binoculars should be. For example, every model except the 6×, 15 incorporates an exclusive and very important extra—a coated interference filter, described elsewhere in this booklet. Asahi Pentax Binoculars represent an outstanding value in the fine-binocular field.

MB



which binocular is right for you?



Since the purchase of a binocular usually represents a one-time investment, it's important that you choose wisely. Some glasses are ideal for pastimes such as girl-watching, while others are more suited for spotting a moose two miles away. If your hobbies are many and varied, by all means choose a pair of general purpose $7\times$, 50 glasses. To help you select the right binocular for your individual needs, we've included a little chart showing which glasses are recommended for certain specific uses. And, for those of you who would like to impress your friends with binocular lore, the following paragraphs are intended to be memorized and quoted whenever the occasion demands it.

First of all, there's no such thing as a six *by* thirty binocular—this misnomer came into being when someone decided to leave out the comma and identify glasses as 6×30 , 7×35 , etc. The “ \times ” means “times” and refers to the magnification. Thus, a pair of $6\times$, 30 glasses makes an object six times larger than when seen with the unaided eye; or brings that object six times closer to you, whichever you prefer. What about the “30”? Most persons think this has something to do with field of view. Not so. It really stands for the diameter of the objective, or front lens, as measured in millimetre ($25.4\text{ mm} = 1\text{ inch}$).

Now for another impressive term—“exit pupil.” Drop this one a few times and your friends will think you're real binocular expert. The exit pupil of a given binocular is the diameter of the ray of light which reaches



MB

your eye through the eyepiece, and is determined by dividing the diameter of the objective lens by the power of magnification. A $7\times$, 35 binocular has an exit pupil of 5mm, which is about average, while a $7\times$, 50 binocular has an exit pupil which measures a whopping 7.1 mm. The exit pupil is important if you're looking for glasses which produce a bright image in dim light, because the larger the pupil, the better a binocular's ability to "see" at night or through haze or fog. Normally, the pupils of our eyes are contracted to about 2 mm in bright sunlight, but in dim light, they open to about 7 mm, and that's when glasses with a large exit pupil come into their own. No, glasses designed for night use won't harm the eyes if used in bright sunlight because the eyes' pupils are automatically contracted to 2 mm.

Lastly, the field of view of a particular binocular is usually stated as a certain number of metre at 1000 yards. The binocular itself is engraved with "Field 7.5° " or "Field 11.0° ." At 1000 yards, each degree equals 16m; therefore, a binocular with an 11.0° field of view would cover 176.1 m at 1000 yards. The wider the field of view, the easier it is for you to follow fast moving objects, like the horses in the backstretch.

Now that you're at home with binocular terminology, consult the chart, look over the complete Asahi Pentax line, and choose your binocular. Then visit your dealer and have a look through the glasses themselves . . . compare them with other binoculars . . . then give the man your money and take them home with you. There's plenty to look at, so don't waste any more time . . . get started NOW!

Models and Their Recommended Uses



	6 ×, 15	6 ×, 25WA	6 ×, 30	8 ×, 30	8 ×, 40WA	7 ×, 35	7 ×, 35WA	7 ×, 50	10 ×, 50	12 ×, 50	16 ×, 50
General Use		B	B	A	A	A	A	A			
Indoor Sports, Theatre	A	A	B	B	B						
Spectator Sports	B	A	A	A	A	A	A				
Nature, Bird Study			B	A	A	A	A	A	A	A	A
Hunting			B	B	A	A	A	B	B	B	B
Hiking			B	B	B	A	A				
Boating				B	B	B	A	A			
Extreme Distance							B	B	A	A	A
Night Use								A			

WA = Wide Angle A = Excellent B = Good



6x, 15

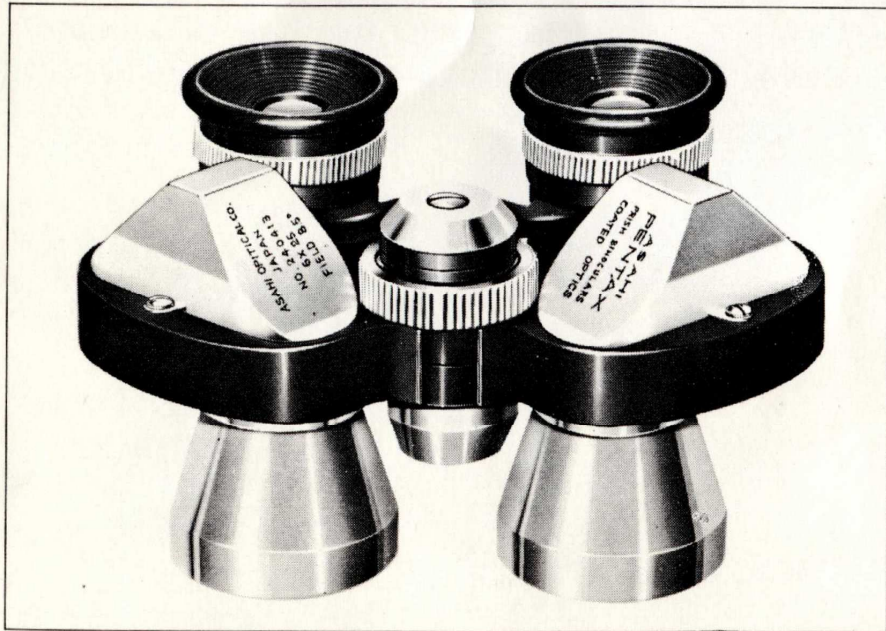
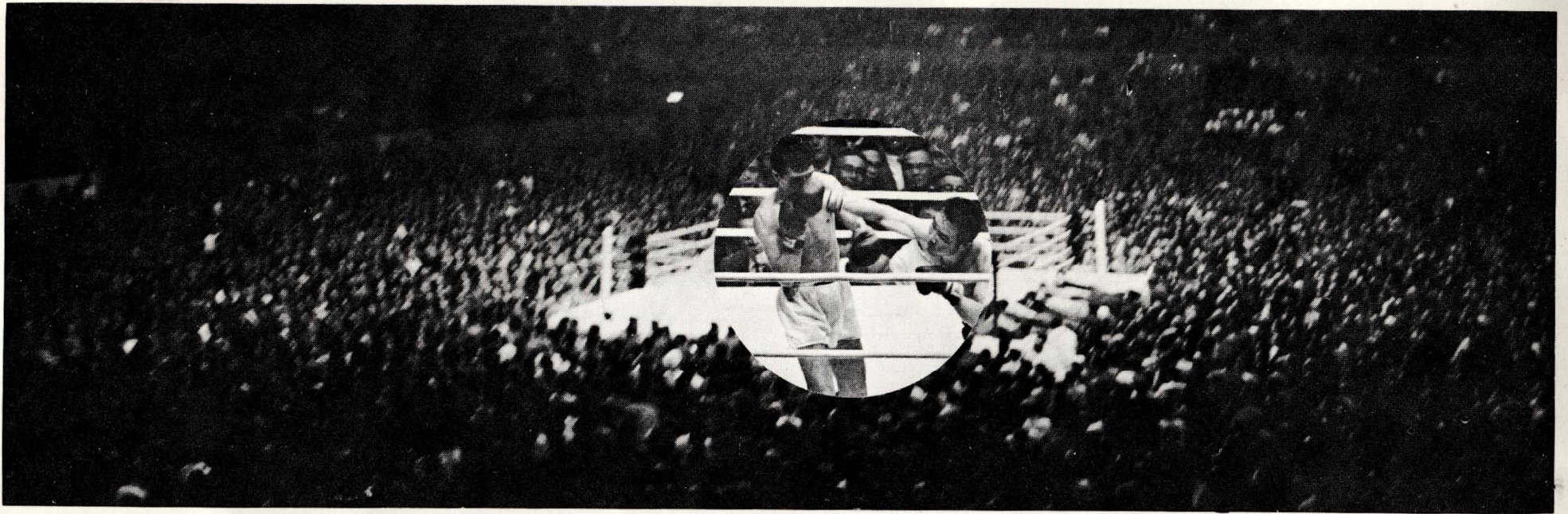


Among the lightest, most compact glasses ever made, this pocket-size binocular delivers superb performance. Ideal for opera, theatre, or other indoor viewing, but equally at home, at the baseball game or track meet. Complete with leather case, shoulder and neck straps. Available in individual focus type only. All the other binoculars are available in individual focus as well as centre focus type.

Coated Interference Filter

All Asahi Pentax prism binoculars illustrated on the following pages contain a built-in coated interference filter. It is this filter which gives the lenses of Asahi Pentax binoculars their distinctive colouring. The interference filter performs a very important function to eliminate ultraviolet and infrared light rays which may be harmful to the eyes.

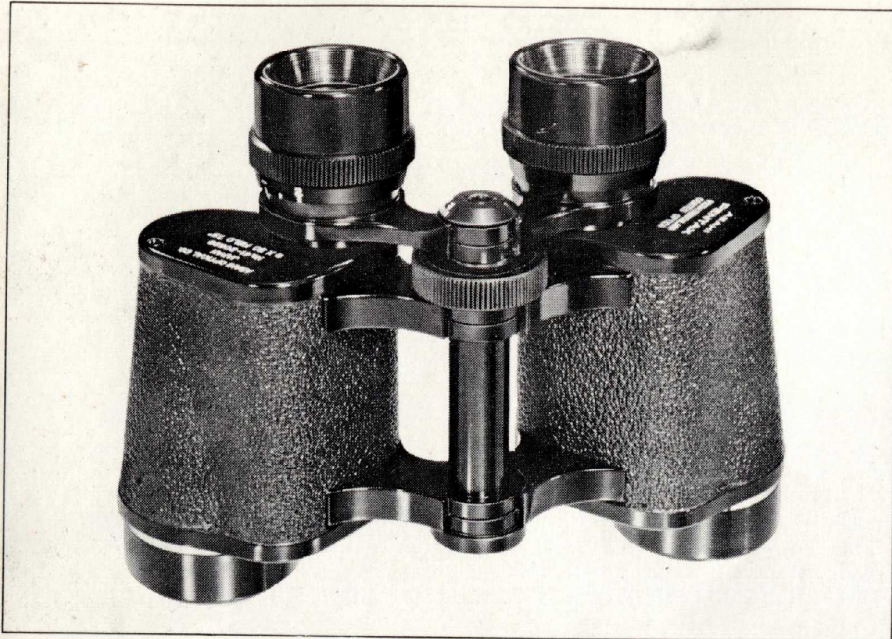




6x, 25 (Wide Angle)



An ultra-wide angle of view makes these compact glasses perfect for sporting events, races, and other fast-moving spectacles where large areas must be viewed. Precision-built to deliver a lifetime of use and pleasure. Complete with leather case, shoulder and neck straps.



6x, 30

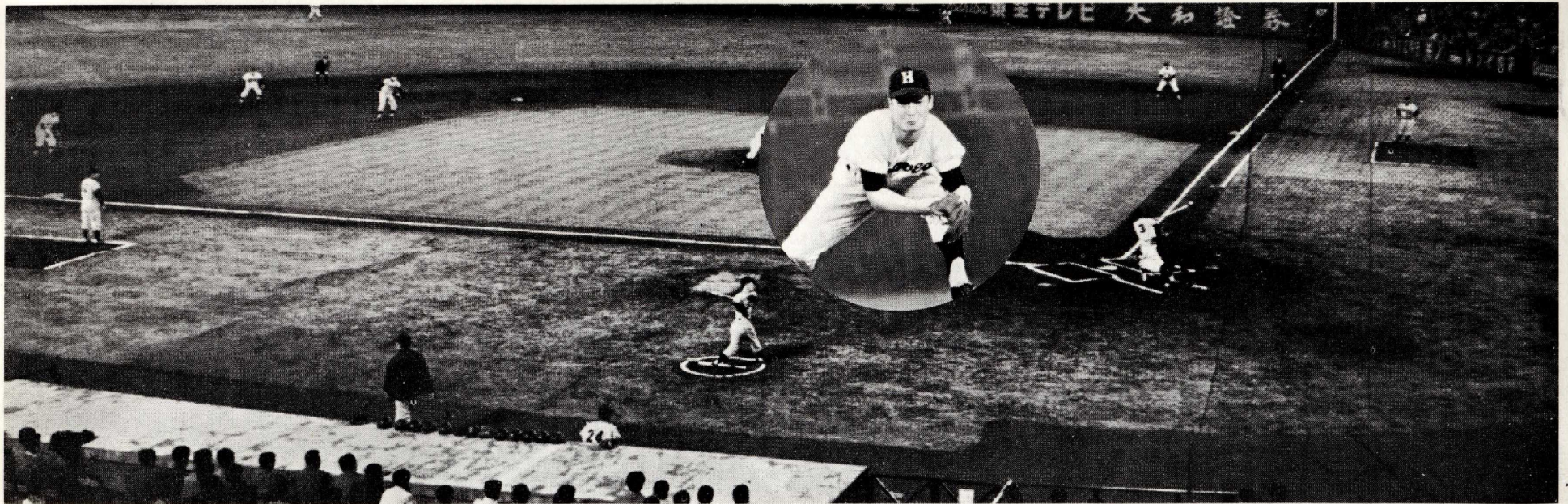
A fine all-around binocular with excellent light transmitting properties. Lightweight and compact for easy handling, yet rugged enough to withstand hard use, these versatile glasses will be your constant companion on hikes, hunting trips, and at all sports events. Complete with fitted case, shoulder and neck straps.

MB



8x, 30

Light and compact, yet offering a somewhat higher degree of magnification, these glasses are chosen by many as a general purpose binocular. Fully corrected optics and superior craftsmanship make these among the finest glasses available today. Complete with fitted case, shoulder and neck straps.



8x, 40 (Wide Angle)

MB

A wide angle of view makes these glasses ideal as general purpose binoculars, especially for spectator sports, nature and bird study, hunting, etc. The wide vision facilitates your viewing of moving objects. Complete with leather case, shoulder and neck straps.



7x, 35

The most popular binocular size made, these glasses are truly general purpose in that they excel in almost every viewing category. Superb optics assure a tack-sharp image and eliminate eye-strain, even with prolonged viewing. Complete with fitted case, shoulder and neck straps.



7x, 35 (Wide Angle)

The new wide vision added to the most popular binocular type makes these glasses extremely versatile for outdoor observation. Compare the wide vision of these glasses with that of the conventional types...you will immediately agree that it is much easier to view. Complete with fitted case, shoulder and neck straps.



7x, 50

MB

Designed for night use, this binocular's large exit pupil provides brilliant viewing under the poorest light conditions. First choice of professional and amateur boatmen, yet well suited to a variety of other uses. Complete with fitted case, shoulder and neck straps.



10x, 50

An outstanding high-powered binocular, perfectly balanced for fatigue-free viewing. Meets the highest professional standards for brightness and clarity of image, and its rugged construction assures years of service. Complete with fitted case, shoulder and neck straps.

MB



12x, 50

Similar to the 10x, 50 binoculars, but with higher degree of magnification and functional design, these glasses offer superb performance for many professional purposes . . . observation of the other side of the "curtain" or borderline, rare bird watching, fishing trip, hunting, etc. Complete with fine fitted case, shoulder and neck straps.



16x, 50

MB

The most powerful type among the Asahi Pentax binoculars, these glasses meet the exacting professional requirements especially for nature, bird watching and extreme distance. Like all the other glasses, the optics are of the highest quality through the same factory where the Asahi Pentax Takumar lenses are ground, polished and assembled. Complete with fitted case, shoulder and neck straps.

Specification

MB

	Magnification	Diameter of Objective lens	Diameter of exit pupil	Angle of view	Relative Brightness	Field of view at 1000 yds	Weight	Height and width
6 × 15	6 ×	15 mm	2.5 mm	7.5°	6	120 m	6.0 oz. (170 g)	$2\frac{5}{32}'' \times 3\frac{9}{16}''$ (6.4 cm × 9.1 cm)
6 × 25 (Wide Angle)	6 ×	25 mm	4.2 mm	11 0°	17	176 m	16.2 oz. (459 g)	$2\frac{5}{8}'' \times 4\frac{9}{16}''$ (6.7 cm × 11.1 cm)
6 ×, 30	6 ×	30 mm	5.0 mm	7.5°	25	120 m	18.3 oz. (519 g)	$4\frac{5}{8}'' \times 6\frac{5}{8}''$ (11.8 cm × 16.9 cm)
8 ×, 30	8 ×	30 mm	3.7 mm	7.5°	14	120 m	18.3 oz. (519 g)	$4\frac{3}{8}'' \times 6\frac{5}{8}''$ (11.1 cm × 16.9 cm)
8 ×, 40 (Wide Angle)	8 ×	40 mm	5.0 mm	9.5°	25	150 m	28.3 oz. (802 g)	$5\frac{2}{3}'' \times 7\frac{1}{5}''$ (14.4 cm × 18.2 cm)
7 ×, 35	7 ×	35 mm	5.0 mm	7.0° (B.L.) 6.5°	25	112 m	24.3 oz. (689 g)	$5\frac{1}{10}'' \times 6\frac{3}{4}''$ (13.0 cm × 17.1 cm)
7 ×, 35 (Wide Angle)	7 ×	35 mm	5.0 mm	11.0°	25	176 m	28.3 oz. (802 g)	$4\frac{9}{10}'' \times 7\frac{1}{5}''$ (12.4 cm × 18.2 cm)
7 ×, 50	7 ×	50 mm	7.1 mm	7.1°	51	113 m	38.8 oz. (1100 g)	7" × 8" (17.8 cm × 22.0 cm)
10 ×, 50	10 ×	50 mm	5.0 mm	5.5°	25	88 m	35.8 oz. (1015 g)	$6\frac{4}{5}'' \times 8''$ (17.3 cm × 22.0 cm)
12 ×, 50	12 ×	50 mm	4.2 mm	5.5°	17	88 m	35.8 oz. (1015 g)	$6\frac{4}{5}'' \times "$ (17.3 cm × 22.0 cm)
16 ×, 50	16 ×	50 mm	3.1 mm	4.0°	10	64 m	35.8 oz. (1015 g)	$6\frac{4}{5}'' \times 8''$ (17.3 cm × 22.0 cm)

B. L. ... Bausch & Lomb Type

All models, prices and specifications are subject to change without notice.

MB



ASAHI OPTICAL CO., LTD.
C.P.O. 895, TOKYO

ASAHI OPTICAL EUROPE S.A.
FREIGHT BUILDING,
BLOCK B — 2ND FLOOR,
BRUSSELS NATIONAL AIRPORT,
ZAVENTEM, BELGIUM.