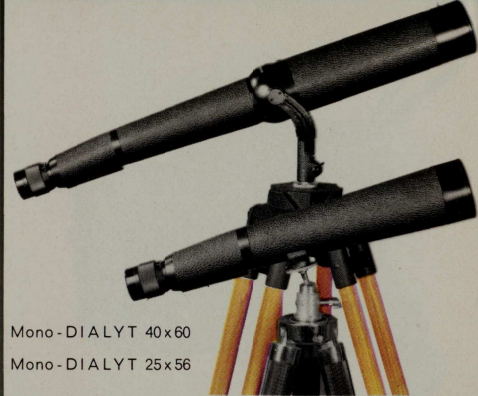




Rubber-Armored ET/S/TO, 6 x 30, 8 x 30, 7 x 50, 10 x 50

Sail ho!

Especially for boating and sports enthusiasts is *Hensoldt*'s line of special rubber-armored binoculars, dust and waterproof, shock-resistant, with individual focusing.



Mono - DIALYT 40x60

Mono - DIALYT 25x56



Sky high

Monoculars for amateur astronomers and explorers are a must, with or without forked holder and erecting prism.

With all, the guarantee of fine workmanship implicit in the *Hensoldt* name, known the world over for quality.

M. HENSOLDT & SOHNE · OPTISCHE WERKE AG · WETZLAR



Hensoldt GLASSES

Binoculars, Monoculars, Theatre Glasses

LOVE THE ACTIVE LIFE

No better binoculars

Lightweight, shaped-to-the-hand, ~~Hensoldt~~ binoculars are ideal for active people. Precision-made, optically and mechanically perfect, ~~Hensoldt~~ quality is the choice of discriminating people throughout the world.

Want a perfect multi-purpose glass? Look no further than through a DIALYT 8x32. The 7x42 makes spotting game easy for the hunter. For night stalking, select the 7x50 for more viewing power.

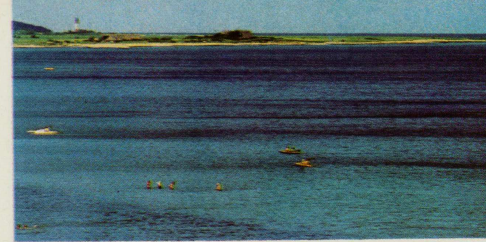


Night-DIALYT 8x56

New Night-DIALYT 8x56 B/TO



DIASPORT 8x20



DIAGON 6x30
DIAGON 8x30
DIAGON 7x50
DIAGON 10x50
DIAGON 15x50

See it all, now

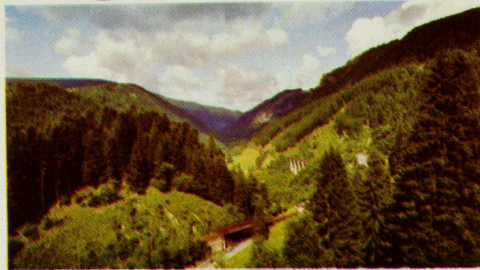
Calling all bird-watchers... DIALYT 10x50 is easy to handle. Its high optical performance "catches" them quickly. For long-range viewing, choose the 16x56, with or without support.

Night watch

Twilight viewing is a pleasure with Night-DIALYT 8x56. The new 8x56 B/TO may be used for night hunting (or sports) with or without eyeglasses or sunglasses.



DIALYT 8x32



DIALYT 7x42
DIALYT 7x50



DIALYT 10x50
DIALYT 16x56



DIAREX 8x30



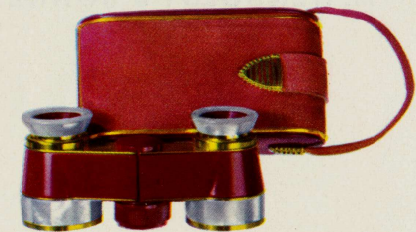
Carry me

Here are two for sports and travel. DIASPORT 8x20, with its own soft leather pouch, is the lightweight answer for the active sports enthusiast (also particularly liked by ladies.)

DIAREX 8x30 perfect for travel and vacation. Comes complete with neck strap and handsome leather case.

Bright lights or dim

Above, the precision-lens DIAGON, in five models. Below, the DIADEM, a beautiful theatre glass in luxury combinations of mother-of-pearl, nickel or gold... with brilliant jewel colors. (Complete with matched carrying case!)



DIADEM Theatre Glasses