

INDEX

BINOCULARS	6 - 7 - 8 - 9
BOW INSTRUMENTS	21
CAMERA LUCIDA	12
COMPASSES	22
DRAWING SETS	18 - 19
DIRECTIONAL COMPASSES	13
DIVIDERS	22
DRILL SETS	11
DROP BOWS	20
DUPLICON DESIGN REPEATERS	12
FIELD GLASSES	3 - 5
FOLDING FIELD GLASS	3
FOUR COLOR MECHANICAL PENCIL	11
GENERATOR FLASHLIGHT	11
GIANT BOW INSTRUMENTS	21
GOOSENECK MAGNIFIERS	15
INSPECTION MAGNIFIERS	15
LINEN TESTERS	16
LIQUID COMPASSES	13
LOUPES	16
MAGNIFIERS	14 - 15 - 16
MAP MEASURES	12
MASTER BOW INSTRUMENTS	21
MICROSCOPES	17
MINIATURE BINOCULARS	9
MONOCULARS	7
OPERA GLASSES	3 - 4 - 5
PEARL OPERA GLASSES	4
PEDOMETERS	12
POCKET HEATERETTES	11
POCKET MAGNIFIERS	16
POCKET MICROSCOPES	17
PRECISION DRAWING SETS	19
PRISM BINOCULARS	6 - 7 - 8 - 9
PROPORTIONAL DIVIDERS	22
RECTANGULAR READING GLASSES	14
READING GLASSES	14
READING GLASS SETS	14
RULING PENS	20
SCREWDRIVER SETS	11
SPECTACLE SCOPES	10
SPORTS GLASSES	3 - 5
STAND MAGNIFIERS	15
TALLY REGISTERS	12
TELESCOPES	10
TRIPOD MAGNIFIERS	16
VEST POCKET SIZE BINOCULARS	9
WOLLENSAK PRODUCTS	5 - 10

ADVERTISING MATERIAL AVAILABLE ON REQUEST.

SCOPE INSTRUMENT CORP.

175 Fifth Avenue, New York 10, N.Y., U.S.A.

Cable address: SCOPECORP.

Telephone: ORegon 3-7115

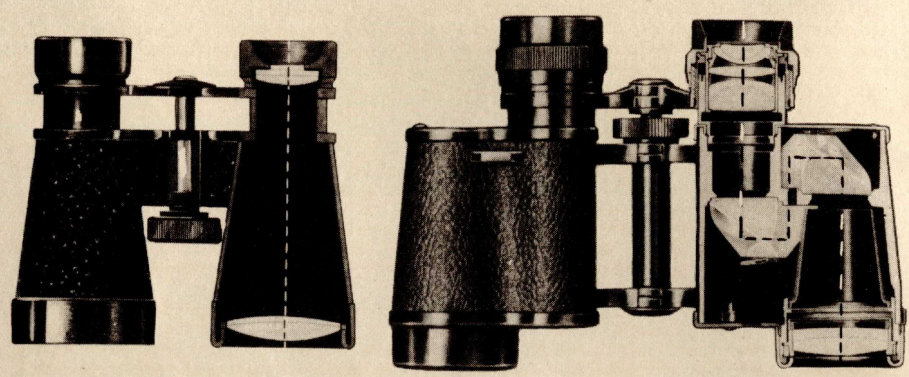
GENERAL WHOLESALE CATALOG



SCOPE

**I N S T R U M E N T
C O R P .**

175 Fifth Avenue, New York 10, N.Y., U.S.A.



FACTS ABOUT BINOCULARS

From the many questions frequently asked about binoculars, we have selected the following answers which we hope may prove of general value to the trade in better understanding the construction and operation of quality binoculars.

The above illustrations show the two types of binoculars. On the left is the Galilean type which is simply two straight tubes, really two telescopes joined into one unit enabling direct vision through the optical system. The greater the power on the Galilean type binocular, the longer the tubes must be. In the Prismatic type - pictured on the right - the tubes house prisms which reflect the light back and forth (as shown in the illustration) permitting greater magnification without necessitating excessively long tubes. The construction of the prism binocular permits the objective lenses to be spaced farther apart than does the Galilean type. This increases the third dimensional effect, enabling the user to better view his subject. The objective (entrance) lenses being spaced farther apart, allow for larger diameter lenses and therefore provide more brilliant images.

MAGNIFICATION OR POWER. Binoculars are rated by power and the diameter of their objective lenses. Thus 8 X 30 indicates that the glass gives an image 8 times the size of that seen by the naked eye. In other words an object 800 yards away would appear, when looking through the binoculars, as if it were only 100 yards away were it being viewed without the aid of a binocular. The figure 30 represents the diameter of the objective lenses measured in millimeters.

WHAT IS FIELD OF VIEW? The width of area seen through binoculars at a given distance (usually 1000 yards) is the "field of view". Some binoculars you will find marked "Field", which is usually shown in degrees, and represents the angle of view. Because of their construction, binoculars of low power generally allow a larger field of view than do high power glasses.

WHAT IS COATING? Under ordinary conditions as light passes through an air-to-glass surface, it will lose approximately 5% of its intensity by reflection. The many air-to-glass surfaces that make up the lenses of a binocular as a rule considerably reduce the amount of light which reaches the eye. Anti-reflection chemical applied by high vacuum machinery coats the surfaces of the lenses, and this coating reduces loss of light. In other words, through coating, the image being viewed will have considerably greater brilliance because of the elimination of reflections.

TYPES OF FOCUSING MECHANISMS. There are two accepted types of binocular focusing mechanisms. The selection of either Central Focusing or Individual Focusing is

CENTRAL FOCUSING. Commercially signified by the letters C.F. A knurled wheel mounted between the tubes of the binocular, the mechanism of which controls the movement of the ocular (eye) lenses for focusing purposes. A binocular of this type usually has one of the ocular lenses adjustable to allow for compensation covering any variation in the strength of the user's eyes.

INDIVIDUAL FOCUSING. Commercially signified by the letters I.F. This type focusing is exactly what the name implies. Each ocular lens is contained in an adjustable housing, and each is focused independent of the other. The ocular housings are marked with diopter scales which enable the user to easily re-set to focusing position without looking through the binoculars, once the proper focusing positions have been noted from the diopter scales after the first setting.

HOW TO FOCUS A C.F. BINOCULAR. Set the diopter scale on right eye focusing mount on Zero. Then turn the focusing wheel gently until tubes are fully extended. Now cover the right objective lens with hand, but avoid touching the lens. With the binocular at your eyes, shorten the tubes slowly until the object on which you are focusing can be seen clear and sharp. Now cover the left objective lens and turn the right ocular housing to the left or to the right, until the right eye sees the object clearly. Make a note of the diopter scale position of the right ocular housing for future use of the binocular.

HOW TO FOCUS AN I.F. BINOCULAR. Each eye piece must be rotated separately. Set the diopter scale of each ocular housing on Zero, then slowly turn the right eye piece until the object is seen clear and sharp with that eye. Repeat the same procedure for the left eye. Cover the left objective lens with your hand when focusing the right eye piece, and the right objective lens when focusing the left eye piece.

INTERPUPILLARY ADJUSTMENT. Commercially referred to as "Break". Many types of field glasses and binoculars are hinged in the center which allows the user to adjust the tubes to the proper distance or width between eyes. After obtaining the correct focus, spread the binocular apart and then slowly bring the tubes closer together until the two circles, at first seen through the binocular, become one.

PROPER CARE OF THE BINOCULAR. Avoid excessive bumping, dropping, or rough handling. Such treatment will affect any precision instrument, and it is therefore of great importance that a binocular be handled with care. Do not take a binocular apart unless you are qualified to do so. Do not remove any screws or try to make lens adjustments. Clean the binocular with soft cloth only. Do not use any soap or abrasives. In cleaning the lenses it is advisable to use lens tissues which are commercially available. Keep the instrument dry.

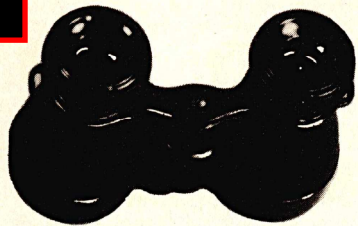
SCOPE POLICY

GUARANTEE
All merchandise sold by SCOPE Instrument Corp. is unconditionally guaranteed against defect in workmanship and material.

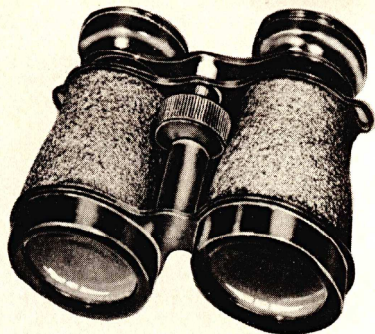
STOCKS
Complete stocks are available in New York for prompt delivery.

TERMS: 2% 10 days, net 30 days, F.O.B. New York, N.Y. Open accounts to firms rated satisfactorily by Dun & Bradstreet. If not rated, submit 3 commercial references to our credit department. C.O.D. orders must be accompanied by a 10% deposit.

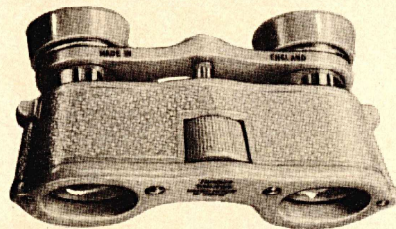
SERVICE AND REPAIRS.
We maintain a complete service and repair department for expedient handling of repairs and adjustments.



No. 2140 2X GERMAN FIELD GLASS.
Sturdily constructed 2 power German field glasses with 32mm objectives. Central focusing, wide field of view. Optically ground lenses. Each individually packed in attractive paper carton. Weight 5 ounces.



No. 2150 2.5X GERMAN FIELD GLASS.
Well made 2.5 power German field glass. 38mm objective lenses, center focus, black metal body. Very light, only 7½ ounces. Large field of view. Each individually packed in attractive paper carton.



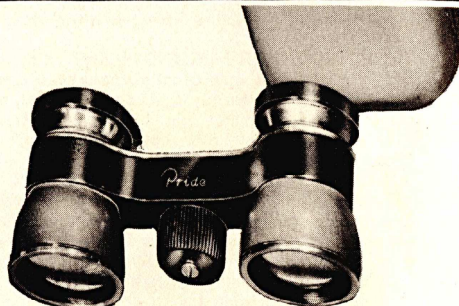
No. 2603 KERSHAW BIJOU OPERA GLASS.
A smart looking, precision made opera glass. Plastic housing with chromium plated tubes. Oval shaped lenses for "wide angle" view. Central focus, designed to fit the hand. Supplied with leather case.



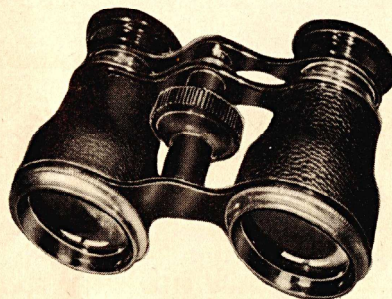
NO. 2601 KERSHAW ELITE OPERA GLASS.
The ELITE Glass is a new idea in theater glass design. Flatter than a pack of cigarettes, this model slips easily in the users pocket or purse. The ELITE gives maximum field of view with the minimum of size and weight. Available in ivory, black, coral, green, and scarlet. Complete with leather case.



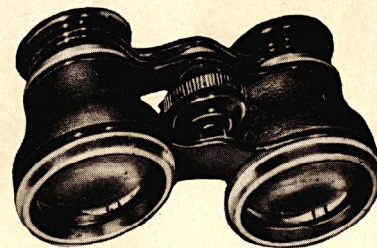
No. 2151 2.5X GERMAN FIELD GLASS WITH CASE.
Same field glass as No. 2150, supplied with neck strap and black plastic case (as illustrated). Neck strap serves as carrying strap for case. Case made in U. S.



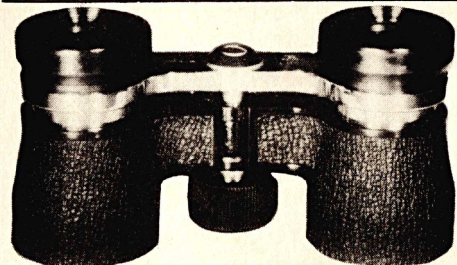
No. 2345 2.5X PRIDE OPERA-SPORTS GLASS.
This is a beautifully designed imported opera-sports glass. Small in size, thus making it an ideal fit even for ladies small handbag. Available in assorted leather coverings. Chromium finished metal trim. Precision made in every detail. Center focus. Supplied with soft leather case. Weight approx. 5 ozs.



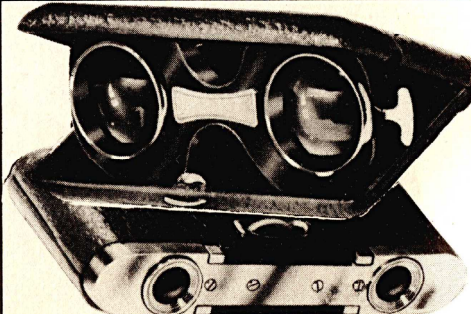
No. 2347 2.5 X 27 FRENCH OPERA GLASS.
A high precision French Theater glass. Quality achromatic optics. Gold plated tubes and trim. Leather covered body available in various colors, with matching lined morrocco leather pouch.



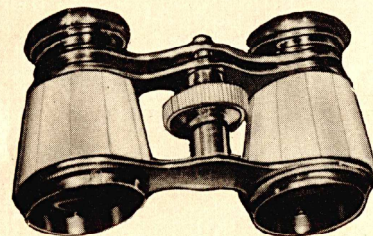
No. 2346 2.5 X 22 FRENCH OPERA GLASS.
A precision glass with an unusually wide field of view. Light in weight, beautifully finished with leather covered tubes and white metal trim. Fully achromatic lenses. Complete with zipper pouch.



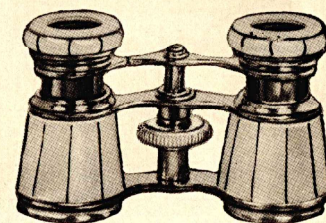
No. 2344 2.5 X 28 IMPORTED OPERA-SPORTS GLASS.
A precision made imported pocket size opera-sports glass. Beautifully constructed of metal with top quality lenses. It is an unusual value. Black leather covered body, interpupillary break, central focusing, wide field of view, sharp clear definition. Supplied with beautiful leather case. Weight approx.



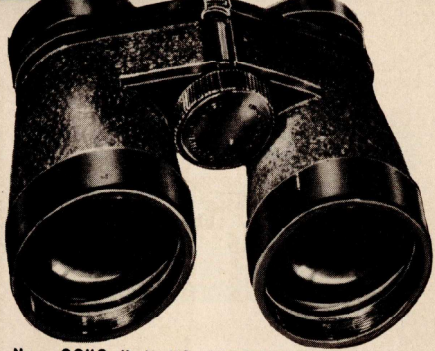
No. 2399 3.5 X 26 FOLDING FIELD GLASS.
A 3.5 power collapsible imported field glass, built into its own container, flips open like a cigarette case and fits flat into the pocket. Closed size approximately 2½" x 4½". It's leather covered metal case is available in as-



No. 2356 2.5 X 25 FRENCH PEARL OPERA GLASS.
This exquisite French Pearl Opera Glass is a masterpiece of beautiful design with high quality precision optics. Barrels are hand-inlaid with selected matched mother of pearl. Crossbars and trim are gilded. Supplied with morrocco leather

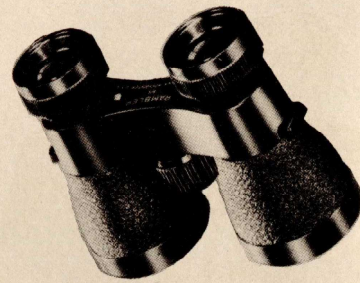


No. 2357 2.5 X 25 DE LUXE FRENCH PEARL OPERA GLASS.
Truly the queen of pearl opera glasses. This exquisitely styled model features hand inlaid pearl body and completely pearl-covered eye-cups, all of the finest matched mother of pearl. Supplied with



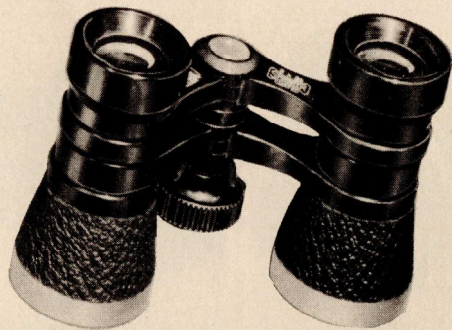
No. 2342 4 X 40 IMPORTED FIELD GLASS-COATED.

An excellent 4 power imported field glass with 40mm coated objective lens. A light-weight glass with a high grade optical system yielding a brilliant and well defined image. Central focusing, with break. Supplied with leather case and straps. Weight approx. 12 ozs.



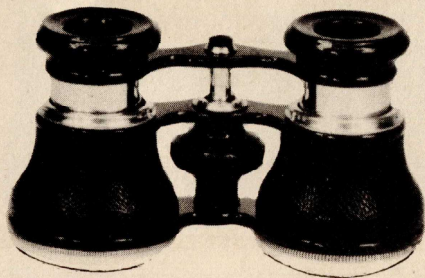
No. 2149 4X WOLLENSAK RAMBLER FIELD GLASS-COATED.

A very fine all around general purpose field glass with 33mm coated objective lenses. Extremely bright, wide field of view. Body finished with attractive vinylite covering. Supplied with leather case and straps. Weight approx. 9 ozs.



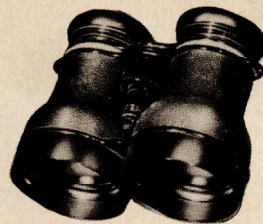
No. 2355 3 X 28 GERMAN FEATHERWEIGHT SPORTS GLASS-COATED.

This model is a precision glass with an unusually wide field of view and interpupillary adjustment. It's high quality optics are fully corrected for color, yielding an unsurpassed brilliantly clear image. Complete with unusual pigskin zipper case. Weight approximately 4 ounces.



No. 2348 3 X 30 FRENCH SPORTS GLASS.

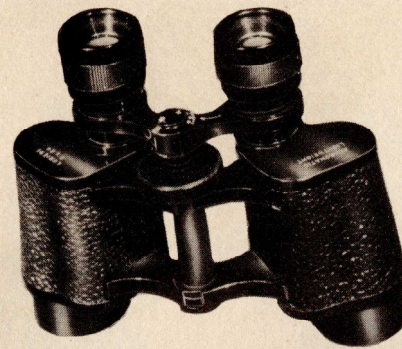
This fine glass is precision made and has an unusually wide field of view. Fully color corrected lenses for maximum brilliance and clarity of image. Compact in size, it is the ideal glass for spectator.



No. 2349 3.5 X 54 FRENCH FIELD GLASS.

An exceptionally well made glass suitable as an all around sports glass. The large 54mm objectives make it especially adaptable for night or marine use. 3.5 power high quality achromatic lenses assure brilliant image. Body covered with black leather. Polished aluminum tubes.

No. 2358

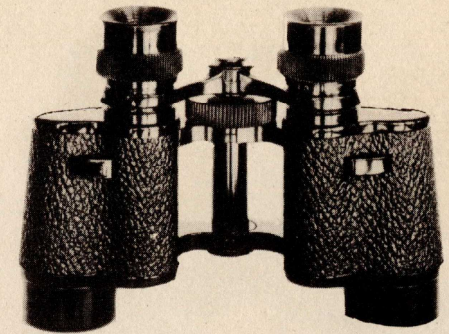


No. 2300 8 X 26 FRENCH PRISM BINOCULAR-C. F.

An ideal French binocular for the outdoor enthusiast. Unusually light in weight, extremely easy to handle. This precision made binocular has greatest light transmission and extremely fine definition. Central focus. Interpupillary break and right eye focusing adjustment. Complete with handsome case and straps. Weight approximately 15 ounces.

No. 2316 8 X 25 FRENCH PRISM BINOCULAR-C. F. COATED.

Same specifications as # 2300 but with fully coated optics and with 25mm objectives.

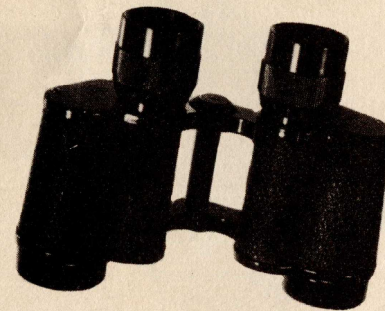


No. 2302 8 X 30 FRENCH PRISM BINOCULAR-C. F.

A compact French binocular that is light in weight. Precision made to highest optical and mechanical standards. Beautifully finished in every detail. Large 30mm objectives provide greatest light transmission. Needlesharp central focus, interpupillary break and right eye focusing adjustment. Complete with handsome case and straps. Weight approx. 16 ozs.

No. 2317 8 X 30 FRENCH PRISM BINOCULAR-C. F. COATED.

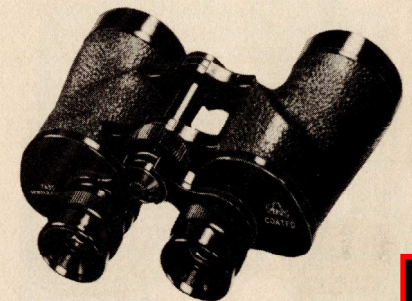
Same specifications as # 2302 but with fully coated optics.



No. 2400 6 X 30 IMPORTED PRISM BINOCULAR-I. F. COATED.

No. 2402 8 X 30 IMPORTED PRISM BINOCULAR-I. F. COATED.

Illustration shows both our imported 6 X 30 and 8 X 30 individual focus design. Both models have a large field of vision, approximately 390 ft. at 1,000 yards. Interpupillary adjustment. Finest optical ground and polished coated lenses. Precision made throughout. Complete with handsome case and straps. Weight 6 X 30 approx. 18 ozs. Weight 8 X 30 approx.



No. 2326 7 X 35 IMPORTED PRISM BINOCULAR-C. F. COATED.

A new model imported 7 X 35 coated central focus, "American design" prism binocular. Unusually compact, lightweight. Highest precision quality throughout. Especially popular among yachtsmen, hunters and bird watchers. Field of view 375 feet at 1,000 yards. Supplied with genuine hard

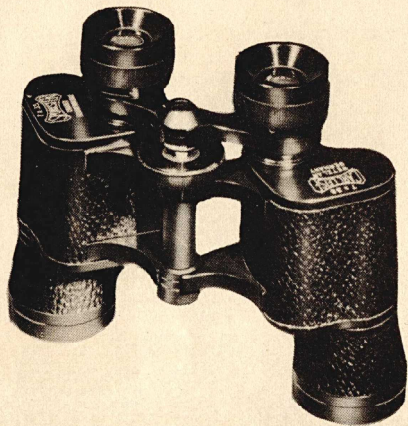


No. 2304 6 X 30 GERMAN FEATHERWEIGHT PRISM BINOCULAR-C. F.

Highest quality German 6 power prism binocular with fully achromatic lenses. Central fingertip focusing and right eye adjustment. Interpupillary adjustment. Made to the most exacting standards with highest grade optical system. Supplied with genuine leather carrying case and straps. Weight approx. 14 ozs.

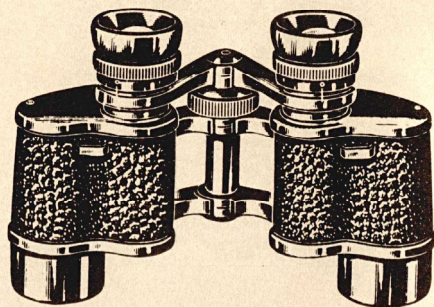
No. 2320 6 X 30 GERMAN FEATHERWEIGHT PRISM BINOCULAR-C. F. COATED.

Same high precision binocular as # 2304 but supplied with fully coated optics.



No. 2325 7 X 35 GERMAN FEATHERWEIGHT PRISM BINOCULAR-C. F. COATED.

The ultimate in fine German 7 X 35 prism binoculars, for the exacting sportsman. A precision binocular that gives maximum magnification without eyestrain when used over long periods. Made to highest standards by skilled German craftsmen. Supplied with genuine leather case and

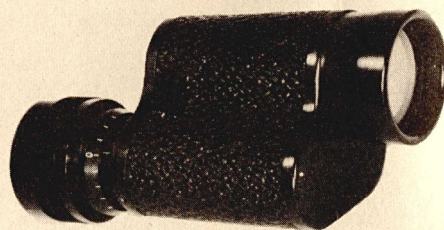


No. 2308 8 X 30 GERMAN FEATHERWEIGHT PRISM BINOCULAR-C. F.

A topnotch German 8 power prism binocular with 30mm objective lenses. Precision made in every detail. Central focusing and right eye adjustment. Interpupillary break. Matched achromatic lenses assure viewing with greatest of ease. Supplied with genuine leather case and straps. Weight approx. 14 ozs.

No. 2321 8 X 30 GERMAN FEATHERWEIGHT PRISM BINOCULAR-C. F. COATED.

Same high precision binocular as # 2308 but supplied with fully coated optics.



No. 2504 6 X 30 GERMAN FEATHERWEIGHT PRISM MONOCULAR.

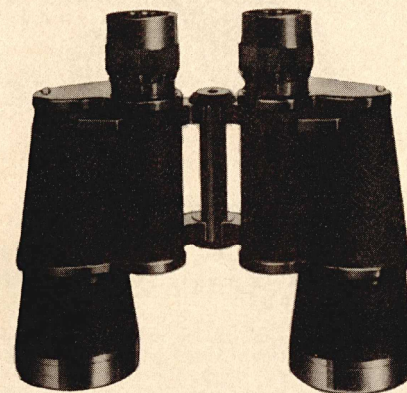
Our German monoculars are popular with hunters and sportsmen. They are of the same high quality and precision workmanship as our German Featherweight binoculars. All models are supplied with a high grade leather case.

No. 2508 8 X 30 GERMAN FEATHERWEIGHT PRISM MONOCULAR.

No. 2520 6 X 30 GERMAN FEATHERWEIGHT PRISM MONOCULAR-COATED.

No. 2521 8 X 30 GERMAN FEATHERWEIGHT PRISM MONOCULAR-COATED.

No. 2525 7 X 35 GERMAN FEATHERWEIGHT

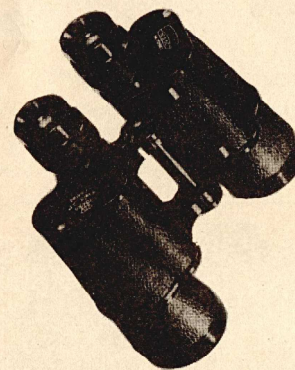


No. 2314 7 X 50 IMPORTED PRISM BINOCULAR-I. F.

High powered Military type glasses, designed for best object definition at long range. The large 50mm objectives with their great light gathering capacity make this glass especially satisfactory under unfavorable light conditions. Individual eye focusing. Complete with case and straps.

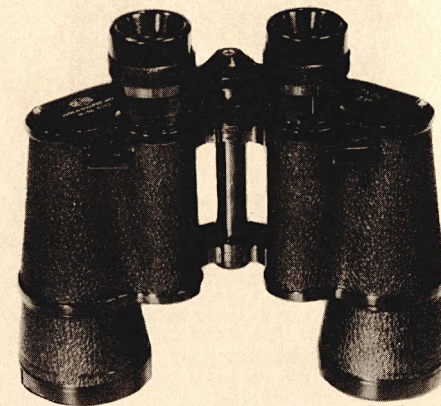
No. 2315 7 X 50 IMPORTED PRISM BINOCULAR-I. F. COATED.

Same high precision binocular as # 2314 but supplied with coated optics.



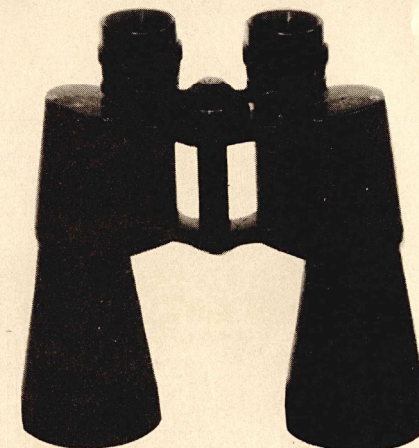
No. 2313 10 X 50 IMPORTED PRISM BINOCULAR-I. F. COATED.

This precision-made individual focus prism binocular is of the same high quality as our 7 X 50 Prism Binoculars. It provides 10X magnification instead of the 7X and its precision engineered optical system will yield a clear and brilliant image even under adverse light conditions. Complete with case and straps.



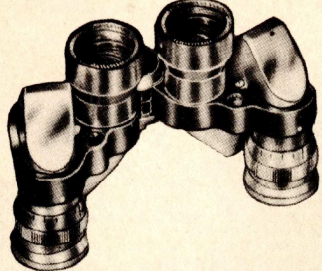
No. 2415 7 X 50 IMPORTED PRISM BINOCULAR-C. F. COATED.

Powerful 7 X 50 Naval type night glass with central focusing for instant adjustment. Right eye piece adjustable to offset the difference in the eyes. Top quality coated optics assure a brilliant image under practically all conditions. Moisture and dust proofed. Complete with case and straps.



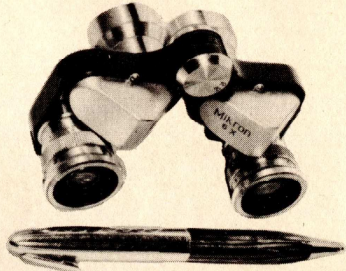
No. 2318 16 X 50 IMPORTED PRISM BINOCULAR-C. F. COATED.

Tremendous power, coupled with precision engineering on both the mechanical as well as the optical details is provided by this new type of binocular. Large 50mm coated objectives give peak light gathering power and sharpness of the detail being observed at all times. This model is equipped with central focus and an individual focusing right eyepiece. Supplied with case and straps.



No. 2124 6 X 15 IMPORTED PRISM BINOCULAR-I. F. COATED.

6 Power magnification with clearest and most brilliant field provided in any imported miniature binocular. Individual eye focusing. A precision made low price glass that fits the palm of your hand. Field of view approx. 438 ft. at 1,000 yards. Supplied in soft leather case. Weight approx. 5 ozs.



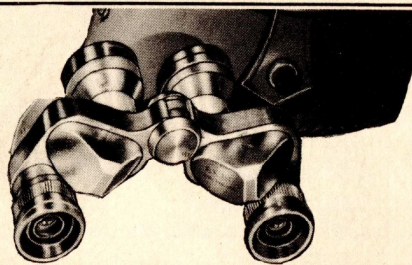
No. 2125 6 X 15 MIKRON IMPORTED PRISM BINOCULAR-I. F.

A well made imported pocket binocular with 6 power magnification and 15mm objective lenses. Slips into your shirt pocket, is always ready for instant use. Individual eye focusing, black enamel and chrome finish. Supplied in handy zipper leather case. Weight approx. 6 ozs.



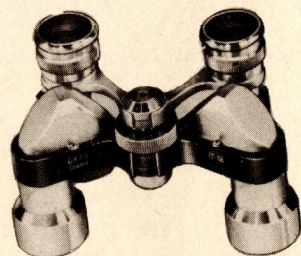
No. 2126 6 X 15 IMPORTED PRISM BINOCULAR-C. F. COATED

This beautifully made imported 6 power prism binocular is flat and compact for handy carrying, includes all features one would possibly want in a binocular-power and compactness. The ideal glass for spectator sports. Features central focusing and coated optics. Supplied with genuine hard leather case. Weight approx. 5 1/2 ozs.



No. 2324 6 X 18 IMPORTED PRISM BINOCULAR-I. F. COATED.

Beautifully designed 6 power imported precision made prism binoculars with 18mm objective lenses. Frame finished brush chrome. Small enough to fit the palm of the hand. Large field of view. Individual eye focusing and coated achromatic lenses. Complete with hand-

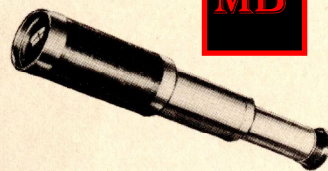


No. 2323 6 X 18 IMPORTED PRISM BINOCULAR-C. F. COATED.

Similar in quality and construction to our 6 x 18 individual focus prism binoculars this model features central focusing and individual right eye adjustment. Exceptional in quality. Field of view 419 ft. at 1,000 yards. Complete with genuine leather case and straps. Weight

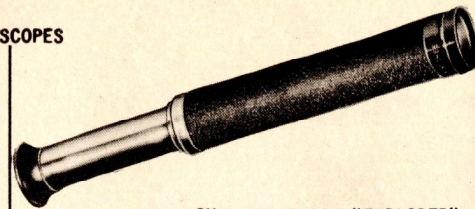
MB

TELESCOPES



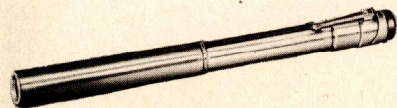
No. 1965 5X TELESCOPE WITH CASE.

A lightweight ruggedly constructed 5X telescope. Nickel plated draw tubes. Comfortable eye piece. Ground and polished lenses.



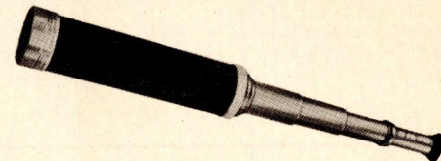
No. 1968 8X WOLLENSAK "EXPLORER" TELESCOPE-COATED.

An inexpensive, but powerful one draw tube telescope with vinylite covered body and nickel plated tube. Coated objective lens. Supplied complete with case.



No. 1969 6X "PENSCOPE" POCKET TELESCOPE-COATED.

The Penscope magnifies distant views by six times with the wide, brilliant field and optical excellence of fine binoculars, yet is compact and easily carried. Screw type focus. Coated optics throughout.



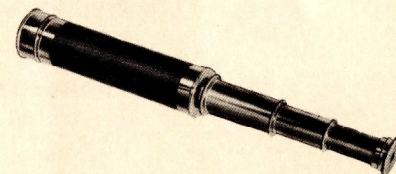
No. 1967 15-40X WOLLENSAK "VARIPOWER" TELESCOPE-COATED.

Literally six telescopes in one, offering 15 to 40X magnification for instant selection by simply adjusting ocular tube. Precision coated lens system. Wollellsaks finest telescope. Supplied with case.

FRENCH BRASS TELESCOPES

These instruments are made in the traditional high standards of French telescopes. Morocco leather covered body, smooth acting true fitting brass tubes permit quick focusing and perfect adjustment at all times. Achromatic coated lenses. Lens cup for protection of objective lens, built-in protective ocular shutter.

- No. 1971 10X FRENCH TELESCOPE-COATED.**
- No. 1972 15X FRENCH TELESCOPE-COATED.**
- No. 1973 20X FRENCH TELESCOPE-COATED.**
- No. 1974 25X FRENCH TELESCOPE-COATED.**



SPECTACLESCOPES



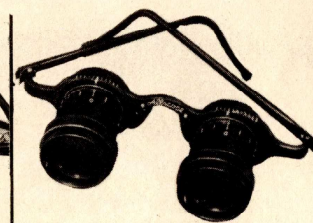
No. 1912 2.5X VIDEOSCOPE.

A 2.5x lightweight sports glass with precision ground lenses. Worn like spectacles. Interpupillary adjustment. Tenite frame will adjust to fit any head. Complete with



No. 2605 2X KERSHAW SPORTSMAN GLASS.

A 2X precision-made spectaclescope. Imported from England. Adjusts to permit optically correct alignment with your eyes. Comfortable to wear. Supplied with leather

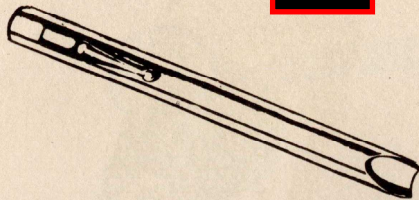


No. 1911 3X WOLLENSAK ALLSCOPE-COATED.

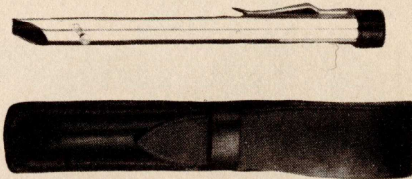
A 3X coated lightweight field glass in spectacle mount. Flexible temples for easy, comfortable fit. Nose piece and pupillary distance adjustable. Complete with genuine sole-leather case.

WEST-POCKET SIZE PRISM BINOCULARS

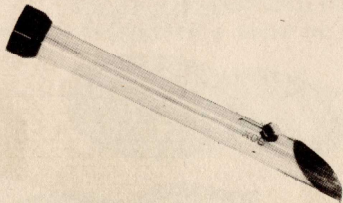
TELESCOPES and SPECTACLE SCOPES



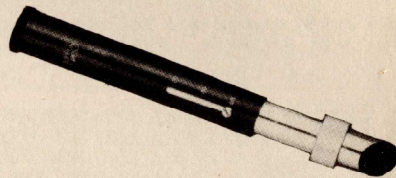
No. 1924 25X GERMAN POCKET MICROSCOPE.
A powerful scope that fits the pocket like a pencil. 25X magnification, accurate and convenient. Strong clip to hold microscope in position when carried in pocket. Ground and polished lenses.



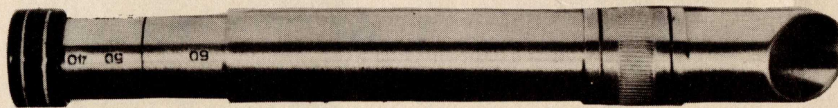
No. 1925 25X GERMAN POCKET MICROSCOPE.
A small light pocket microscope with a large flat field. Precision optical system. Spiral focusing. with pocket clip. Supplied complete with leather case.



No. 1940 40X GERMAN POCKET MICROSCOPE.
German pocket microscope, with a brilliant image and large flat field. Focusing adjustment that locks at any desired point. Ground and polished lenses. May be used anywhere there is light enough to read by.



NO. 1927 20-60X POCKET MICROSCOPE
A pocket size microscope, with adjustable power tube, to provide magnification from 20X to 60X, by a simple adjustment of the power tube. Sharp definition, no distortion over full field of vision. Ring type fine focusing control, for hairline focus.



No. 1929 40-50-60X POCKET MICROSCOPE.

A versatile, precision-made instrument, can be carried in pocket, ready for instant use anywhere, any time. This well-made instrument can be set for 40, 50 or 60 power. Built to rigid optical and mechanical standards. Complete with leather case.

No. 1939 200X IMPORTED SCHOLASTIC MICROSCOPE.

A precision-made microscope with 200X magnification. Eye piece and objective are fully achromatic. Smooth focusing mechanism. Double swivel mirror adjustable to any position. Heavy horseshoe base eliminates vibration. Stage equipped with spring clips to hold slides in place.

No. 1938 80X IMPORTED MICROSCOPE.

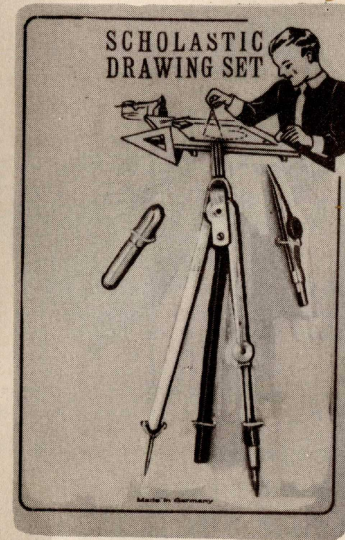
Built with the features and precision of a laboratory type microscope, this miniature version has a rack and pinion focus, adjustable mirror, a tilting stand and 2 spring clips for holding slides.



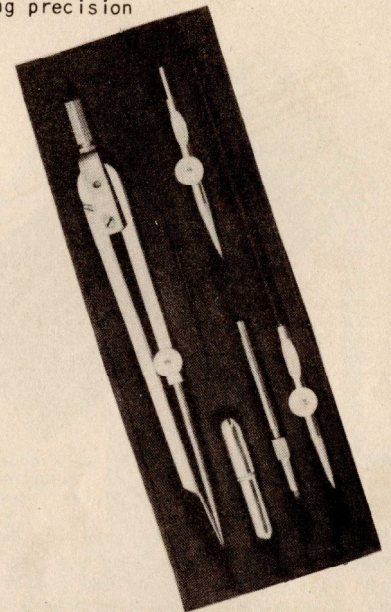
1938

SCHOLASTIC DRAWING SETS

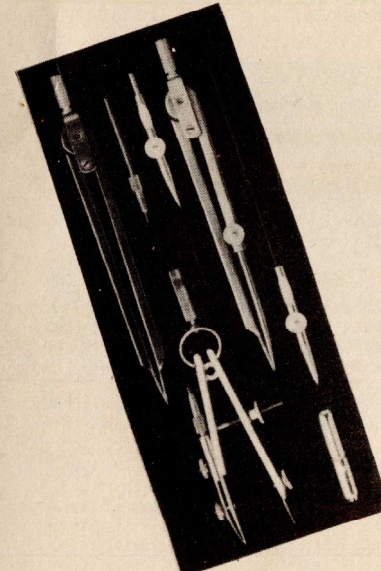
All our Drafting Instruments are made in Germany with the painstaking precision of old world craftsmanship.



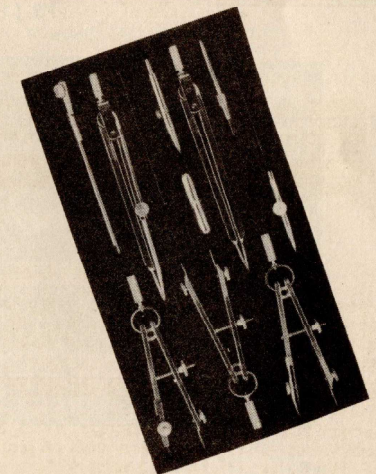
No. 103 4 1/2" School compass with interchangeable pen and pencil part. Extra ruling pen handle to convert pen part into ruling pen. Box containing divider point. All mounted on card.



No. 202 4 1/2" Nickel plated compass, with divider, pen and pencil part. 4 1/2" ruling pen. Lead and needle box. Screwdriver. In pocketbook case.



No. 206 4 1/2" Nickel plated compass with divider, pen and pencil part. 4 1/2" Divider. 3 3/4" Reversible bow compass. 4 1/2" Ruling pen. Lead Box. Screwdriver.



No. 317 4 3/4" Nickel plated compass with knuckle jointed lengthening bar, divider, pen and pencil part. 3 3/4" Divider. 4 1/2" Ruling pen. 3 3/4" Side wheel, ring head bow pen. 3 3/4" Side wheel, ring head bow pencil. 3 3/4" Side wheel, ring head bow divider. Extra ruling pen handle. Lead box. Screwdriver.

175 fifth avenue, new york 10, n. y.

SCHOLASTIC AND BEGINNERS DRAWING SETS

PAGE 18		
103	CARDER DRAWING SET	.44 ea
202	SCHOLASTIC DRAWING SET	.77 ea
208	SCHOLASTIC DRAWING SET	2.04 ea
317	SCHOLASTIC DRAWING SET	3.08 ea

COLLEGIATE AND PRECISION DRAWING SETS

PAGE 19		
403	COLLEGIATE DRAWING SET	5.50 ea
410	COLLEGIATE DRAWING SET	8.25 ea
612	PRECISION DRAWING SET	12.50 ea

RULING PENS AND DROP BOWS

PAGE 20		
352	5" STUDENT RULING PEN	.31 ea
354	5-1/2" HEXAGONAL RULING PEN	.66 ea
559	5-1/2" PRECISION RULING PEN	1.10 ea
564	5-3/4" FINE LINE RULING PEN	1.95 ea
566	5-1/2" JACKKNIFE RULING PEN	3.00 ea
571	6" SWEDISH DETAIL PEN	1.50 ea
574	5-3/4" RAILROAD PEN S.W.	2.20 ea
576	4-3/4" PRECISION CONTOUR PEN	1.55 ea
651	4-3/4" SINGLE SPRING DROP BOW COMBINATION	1.25 ea
652	4-3/4" DOUBLE SPRING DROP BOW COMBINATION	2.00 ea
655	FITTED CASE FOR #651 OR #652	.66 ea

BOW INSTRUMENTS

PAGE 21		
414	3-1/2" REVERSIBLE BOW COMPASS	.60 ea
430	3-1/2" RINGHEAD BOW PEN C.W.	.75 ea
451	3-1/2" RINGHEAD BOW PENCIL C.W.	.70 ea
432	3-1/2" RINGHEAD BOW DIVIDER C.W.	.65 ea
629	4-1/2" INTERCHANGEABLE BOW COMBINATION	2.75 ea
607	3-3/4" STEEL SPRING BOW PEN C.W.	1.50 ea
608	3-3/4" STEEL SPRING BOW PENCIL C.W.	1.45 ea
609	3-3/4" STEEL SPRING BOW DIVIDER C.W.	1.30 ea
591	6" MASTER BOW PENCIL	2.20 ea
592	6" MASTER BOW COMBINATION	3.00 ea
593	6" MASTER BOW COMBINATION W/BEAM EXTENSION	3.75 ea

COMPASSES, DIVIDERS AND PROPORTIONAL DIVIDERS

PAGE 22		
417	5-1/2" REVERSIBLE COMPASS	1.50 ea
520	6-1/4" PRECISION COMPASS W/PARTS	2.40 ea
524	6-1/4" TELESCOPING COMPASS W/PARTS	2.50 ea
532	6" DIVIDER W/STRAIGHTENING DEVICE	1.50 ea
565	8" PROPORTIONAL DIVIDER - ALUMINUM	5.50 ea
588	8" PROPORTIONAL DIVIDER - NICKEL SILVER W/RACK MOVEMENT	14.00 ea

The prices shown below are NET prices, F.O.B. New York, N. Y. A 20% Federal Excise Tax on the sales price must be collected by the seller of all Opera, Sports, and Field Glasses, as well as Binoculars. Such Tax does not apply on sale of Telescopes, Monoculars, or any of the other items listed.

ALL PRICES SUBJECT TO CHANGE WITHOUT NOTICE.

WHOLESALE PRICE LIST

NO. 151

FALL - 1951

OPERA - SPORTS GLASSES

PAGE 3			
2140	2X	GERMAN FIELD GLASS	\$ 16.50 doz
2160	2.5X	GERMAN FIELD GLASS	23.10 doz
2151	2.5X	GERMAN FIELD GLASS W/CASE	30.00 doz
2345	2.5X	PRIDE OPERA-SPORTS GLASS	5.38 ea
2344	2.5 X 28	IMPORTED OPERA-SPORTS GLASS	7.50 ea
2399	3.5 X 28	FOLDING FIELD GLASS	7.50 ea

PAGE 4

2603		KERSHAW BIJOU OPERA GLASS	8.70 ea
2601		KERSHAW ELITE OPERA GLASS	9.80 ea
2347	2.5 X 27	FRENCH OPERA GLASS	10.50 ea
2346	2.5 X 22	FRENCH OPERA GLASS	13.25 ea
2356	2.5 X 25	FRENCH PEARL OPERA GLASS	19.00 ea
2357	2.5 X 26	DELUXE FRENCH PEARL OPERA GLASS	23.00 ea

FIELD GLASSES

PAGE 5			
2342	4 X 40	IMPORTED FIELD GLASS - COATED	10.50 ea
2149	4 X 33	WOLLENSAK RAMBLER - COATED	15.90 ea
2355	3 X 28	GERMAN SPORTS GLASS - COATED	15.00 ea
2348	3 X 30	FRENCH SPORTS GLASS	15.25 ea
2349	3.5 X 54	FRENCH FIELD GLASS	21.00 ea
2358	3.5 X 54	FRENCH FIELD GLASS - COATED	23.50 ea

PRISM BINOCULARS

PAGE 6			
2300	8 X 26	FRENCH PRISM BINOCULAR C.F.	19.75 ea
2316	8 X 25	FRENCH PRISM BINOCULAR C.F. - COATED	25.75 ea
2302	8 X 30	FRENCH PRISM BINOCULAR C.F.	23.75 ea
2317	8 X 30	FRENCH PRISM BINOCULAR C.F. - COATED	29.50 ea
2400	6 X 30	IMPORTED PRISM BINOCULAR I.F. - COATED	
2402	8 X 30	IMPORTED PRISM BINOCULAR I.F. - COATED	
2410	6 X 30	IMPORTED PRISM BINOCULAR C.F. - COATED - B&L STYLE (not illustrated)	32.50 ea
2412	8 X 30	IMPORTED PRISM BINOCULAR C.F. - COATED - B&L STYLE (not illustrated)	35.00 ea
2326	7 X 35	IMPORTED PRISM BINOCULAR C.F. - COATED - B&L STYLE	37.50 ea

PRISM BINOCULARS AND MONOCULARS

PAGE 7			
2304	6 X 30	GERMAN PRISM BINOCULAR C.F.	29.75 ea
2320	6 X 30	GERMAN PRISM BINOCULAR C.F. - COATED	33.75 ea
2308	8 X 30	GERMAN PRISM BINOCULAR C.F.	32.75 ea
2321	8 X 30	GERMAN PRISM BINOCULAR C.F. - COATED	36.75 ea
2325	7 X 35	GERMAN PRISM BINOCULAR C.F. - COATED	42.50 ea
2504	6 X 30	GERMAN PRISM MONOCULAR	14.88 ea
2508	8 X 30	GERMAN PRISM MONOCULAR	16.38 ea
2520	6 X 30	GERMAN PRISM MONOCULAR - COATED	16.88 ea
2521	8 X 30	GERMAN PRISM MONOCULAR - COATED	18.38 ea
2525	7 X 35	GERMAN PRISM MONOCULAR - COATED	21.25 ea

PRISM BINOCULARS

PAGE 8

2314	7	X 50	IMPORTED PRISM BINOCULAR I.F.	\$ 26.50 ea
2316	7	X 50	IMPORTED PRISM BINOCULAR I.F. - COATED	28.50 ea
2415	7	X 50	IMPORTED PRISM BINOCULAR C.F. - COATED	39.50 ea
2315	10	X 50	IMPORTED PRISM BINOCULAR I.F. - COATED	40.00 ea
2318	16	X 50	IMPORTED PRISM BINOCULAR C.F. - COATED	38.50 ea

VEST POCKET SIZE PRISM BINOCULARS

PAGE 9

2124	6	X 15	IMPORTED PRISM BINOCULAR I.F. - COATED	15.50 ea
2125	6	X 15	MIKRON IMPORTED PRISM BINOCULAR I.F.	19.75 ea
2128	6	X 15	IMPORTED PRISM BINOCULAR C.F. - COATED	1 to 3 pieces- 28.50 ea
				4 or more pieces- 25.65 ea
2324	6	X 18	IMPORTED PRISM BINOCULAR I.F. - COATED	16.50 ea
2323	6	X 18	IMPORTED PRISM BINOCULAR C.F. - COATED	1 to 3 pieces- 28.50 ea
				4 or more pieces- 25.65 ea

TELESCOPES AND SPECTACLE SCOPES

PAGE 10

1965	5X	TELESCOPE W/CASE	1.50 ea
1968	8X	WOLLENSAK EXPLORER TELESCOPE - COATED	5.55 ea
1969	6X	PENSCOPE POCKET TELESCOPE - COATED	6.00 ea
1967	15X to 40X	WOLLENSAK VARIPOWER TELESCOPE - COATED	18.45 ea
1971	10X	FRENCH TELESCOPE - COATED	9.50 ea
1972	15X	FRENCH TELESCOPE - COATED	16.25 ea
1973	20X	FRENCH TELESCOPE - COATED	18.00 ea
1974	25X	FRENCH TELESCOPE - COATED	23.25 ea
1912	2.5X	VIDEOSCOPE	6.00 ea
2805	2X	KERSHAW SPORTSMAN GLASS	15.50 ea
1911	3X	WOLLENSAK ALLSCOPE - COATED	21.00 ea

SPECIALTIES

PAGE 11

1538	PRECISION SCREW DRIVER SET	10.80 doz
1540	PRECISION DRILL & SCREW DRIVER SET	16.92 doz
1485	AUTOMATIC 4 COLOR MECHANICAL PENCIL	28.80 doz
1002	IMPORTED POCKET HEATERETTE	18.00 doz
1537	GERMAN GENERATOR FLASHLIGHT	2.97 ea

PAGE 12

1110	MAP MEASURE W/LEATHER SHEATH	2.20 ea
1021	NEW HAVEN PEDOMETER	3.57 ea
1023	TALLY REGISTER - 3 FIGURE	2.70 ea
1024	TALLY REGISTER - 4 FIGURE	3.30 ea
1025	IMPORTED TALLY REGISTER - 4 FIGURE	3.25 ea
1610	CLAIRE-VUE CAMERA LUCIDA	1 to 5 pieces- 56.67 ea
		6 or more pieces- 53.00 ea
1612	M-2 DUPLICON DESIGN REPEATER	15.00 ea
1614	M-4 DUPLICON DESIGN REPEATER	28.33 ea
1615	M-4V DUPLICON DESIGN REPEATER	39.67 ea

DIRECTIONAL COMPASSES

PAGE 13

1035	GERMAN DIRECTIONAL COMPASS	4.40 doz
1045	GERMAN DIRECTIONAL COMPASS	5.75 doz
1039	GERMAN DIRECTIONAL COMPASS W/COVER	10.56 doz
1032	GERMAN DIRECTIONAL COMPASS W/LOCK	13.20 doz
1030	GERMAN DIRECTIONAL COMPASS W/LOCK	11.88 doz
1038	GERMAN DIRECTIONAL COMPASS W/LOCK	14.52 doz
1040	GERMAN DIRECTIONAL COMPASS W/COVER & LOCK	17.16 doz
1041	GERMAN DIRECTIONAL COMPASS W/COVER & LOCK	34.32 doz
1055	SCOPE IMPORTED LIQUID COMPASS	6.00 ea

SCOPE READING GLASSES

PAGE 14

3025	2-1/2"	IMPORTED READING GLASS	\$ 7.20 doz
3525	2-1/2"	READING GLASS	.90 ea
3530	3"	READING GLASS	1.20 ea
3535	3-1/2"	READING GLASS	1.50 ea
3540	4"	READING GLASS	1.80 ea
3545	4-1/2"	READING GLASS	2.70 ea
3605		READING GLASS SET - 5 READING GLASSES	8.82 set
3610		READING GLASS SET - 10 READING GLASSES	16.20 set
3515		READING GLASS SET - 15 READING GLASSES	22.50 set
3164	2" X 4"	RECTANGULAR READING GLASS	1.95 ea
3165	2" X 4"	DELUXE RECTANGULAR READING GLASS	3.00 ea

MAGNIFIERS

PAGE 15

3450	3"	FLEXIBLE GOOSENECK MAGNIFIER	3.35 ea
3455	3-1/2"	FLEXIBLE GOOSENECK MAGNIFIER	3.75 ea
3440	4"	FLEXIBLE GOOSENECK MAGNIFIER	4.10 ea
3445	4-1/2"	FLEXIBLE GOOSENECK MAGNIFIER	4.55 ea
3148		DESK MAGNIFIER - PAPERWEIGHT	6.60 doz
3140		KZY REDE FOLDING STAND MAGNIFIER W/CASE	3.00 ea
3142		MAGNIPROX MAGNIFIER	4.50 ea
3149		ILLUMINATED MAGNIFIER	5.50 ea

PAGE 16

3165		IMPORTED POCKET MAGNIFIER IN LEATHERETTE CASE	4.00 doz
3145		POCKET MAGNIFIER IN LEATHER CASE	5.00 doz
3203	4 X 33	SINGLE LENS MAGNIFIER	6.34 doz
3207	5 X 27	SINGLE LENS MAGNIFIER	4.32 doz
3215	6 X 33	DOUBLE LENS MAGNIFIER	12.95 doz
3217	10 X 27	DOUBLE LENS MAGNIFIER	7.92 doz
3108	10X	TRIPOD MAGNIFIER	9.00 doz
3109	10X	DOUBLE MAGNIFIER	2.10 ea
3101	1" X 1"	GERMAN LINEN TESTER	2.50 ea
3102	3/4" X 3/4"	GERMAN LINEN TESTER	1.80 ea
3103	1/2" X 1/2"	GERMAN LINEN TESTER	1.35 ea
3105	3/8" X 3/8"	GERMAN LINEN TESTER	1.15 ea
3111	1" X 1"	LINEN TESTER	1.50 ea
3110	1" X 1"	LINEN TESTER W/CASE	3.00 ea

MICROSCOPES

PAGE 17

1924	25X	GERMAN POCKET MICROSCOPE	.90 ea
1925	25X	GERMAN POCKET MICROSCOPE W/CASE	2.50 ea
1940	40X	GERMAN POCKET MICROSCOPE	1.85 ea
1927	20X to 60X	IMPORTED POCKET MICROSCOPE	2.37 ea
1929	40X-60X-80X	POCKET MICROSCOPE	11.10 ea
1929	200X	IMPORTED SCHOLASTIC MICROSCOPE	
1938	80X	IMPORTED MICROSCOPE	2.97 ea