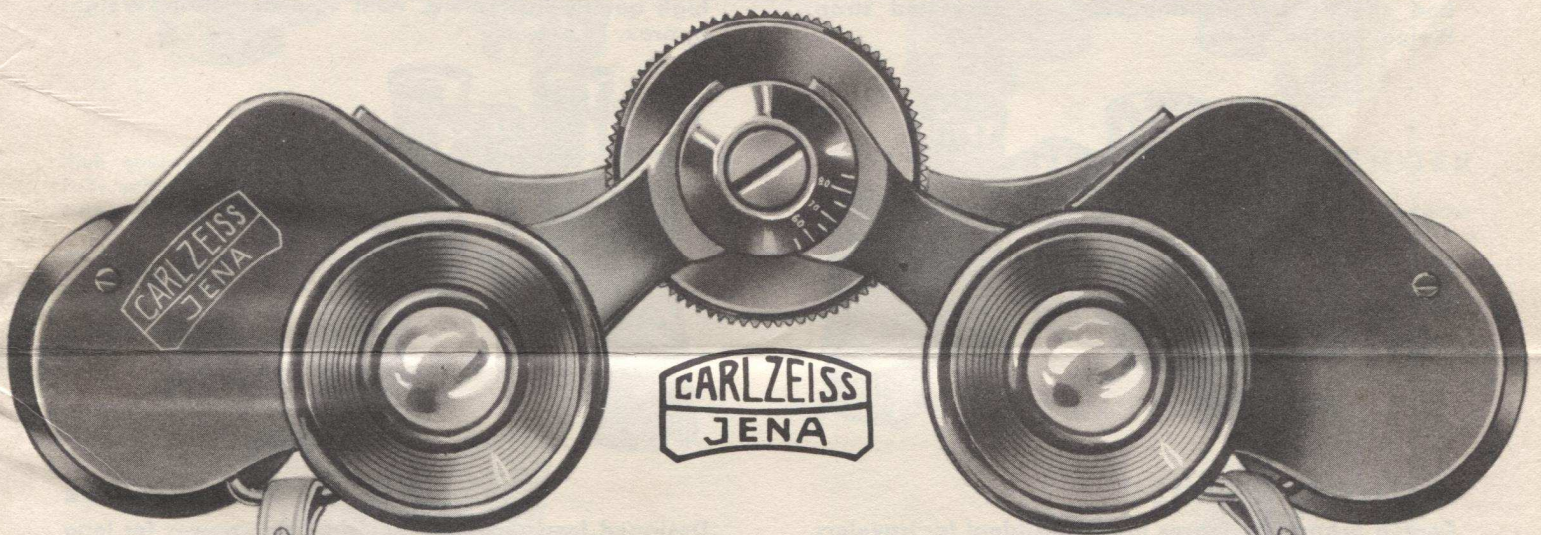


1952

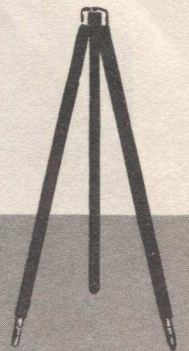
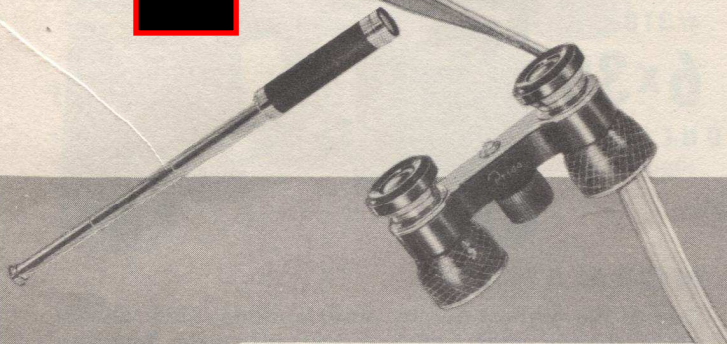
CATALOG

**MORE THAN 60 MODELS OF THE FINEST IMPORTED BINOCULARS,
OPERA AND FIELD GLASSES FROM GERMANY, FRANCE, JAPAN**



ALSO: IMPORTED TELESCOPES . . . TRIPODS
CABLE RELEASES . . . CUT FILM HOLDERS
THERMOMETERS . . . LINEN TESTERS

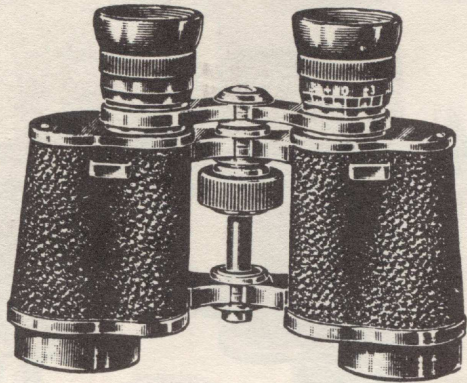
MB



 **S. E. LASZLO** IMPORTER
25 LAFAYETTE STREET • BROOKLYN 1, NEW YORK

DELUXE FRENCH, LARGE BODY BINOCULARS
FEATHERWEIGHT, WIDE ANGLE,
COATED & UNCOATED

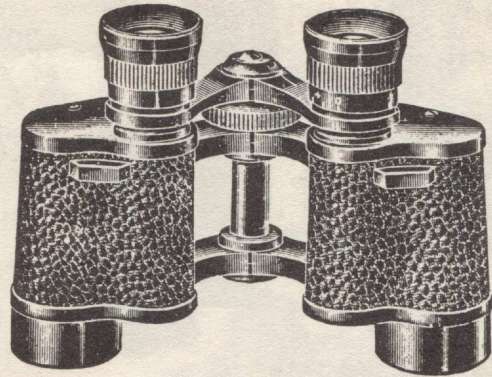
#306 **8x25** UNCOATED



CHALLENGER

High quality, beautifully finished featherweight binoculars. Fully achromatic lenses. Center and right eye focusing. With case and strap. Weight approx. 12 ozs.

#303 **8x30** UNCOATED WIDE ANGLE

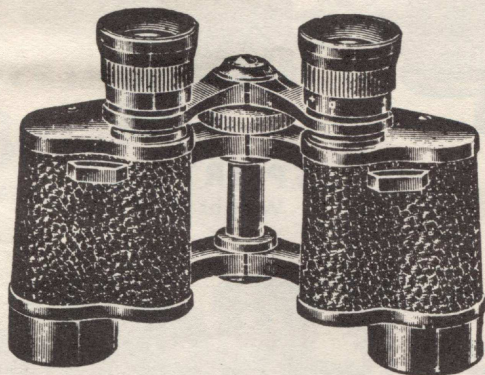


CHALLENGER

Featherweight precision made binoculars. Fully achromatic. Center and right eye focusing. A very popular glass. With case and strap. Weight approx. 13 ozs.



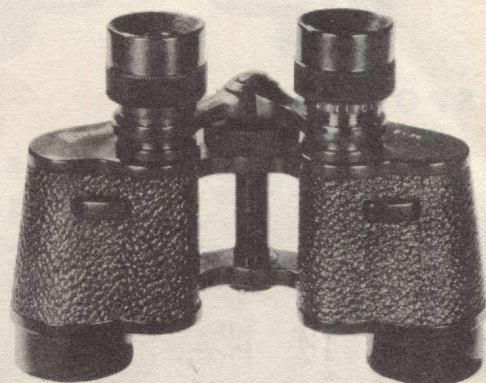
#312 **8x30** COATED WIDE ANGLE



ILE DE FRANCE

Fully achromatic lenses. A popular featherweight model for vacationers and sportsmen. With case and strap. Weight approx. 13 ozs.

#310 **8x32** COATED WIDE ANGLE



ILE DE FRANCE

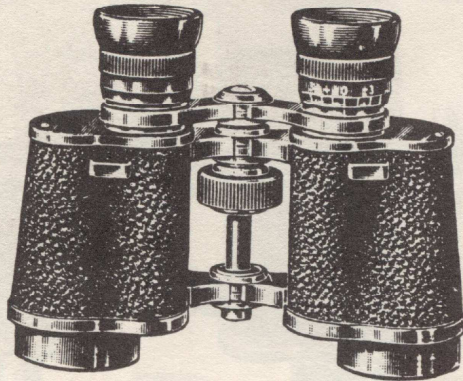
New 1951 model containing highly luminous precision coated optics. A beautiful, large ocular glass that will satisfy the most critical. With case and strap. Weight approx. 13 ozs.



S. E. LASZLO IMPORTER
 25 LAFAYETTE STREET • BROOKLYN 1, NEW YORK

DELUXE FRENCH, LARGE BODY BINOCULARS
FEATHERWEIGHT, WIDE ANGLE,
COATED & UNCOATED

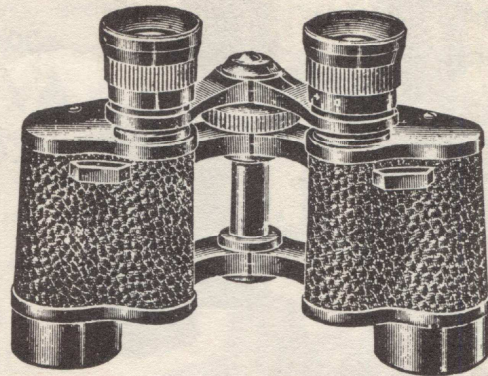
#306 **8x25** UNCOATED



CHALLENGER

High quality, beautifully finished featherweight binoculars. Fully achromatic lenses. Center and right eye focusing. With case and strap. Weight approx. 12 ozs.

#303 **8x30** UNCOATED WIDE ANGLE

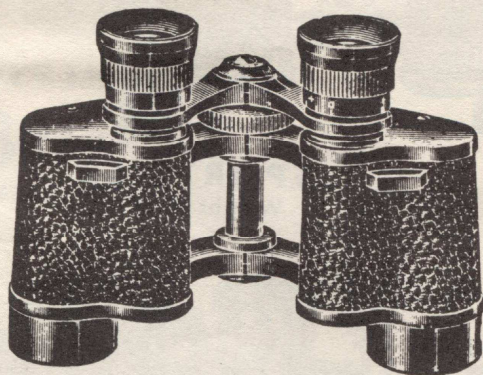


CHALLENGER

Featherweight precision made binoculars. Fully achromatic. Center and right eye focusing. A very popular glass. With case and strap. Weight approx. 13 ozs.



#312 **8x30** COATED WIDE ANGLE



ILE DE FRANCE

Fully achromatic lenses. A popular featherweight model for vacationers and sportsmen. With case and strap. Weight approx. 13 ozs.

#310 **8x32** COATED WIDE ANGLE



ILE DE FRANCE

New 1951 model containing highly luminous precision coated optics. A beautiful, large ocular glass that will satisfy the most critical. With case and strap. Weight approx. 13 ozs.

 **S. E. LASZLO** IMPORTER
 25 LAFAYETTE STREET • BROOKLYN 1, NEW YORK

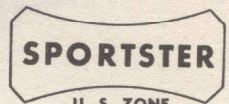
MADE IN WETZLAR



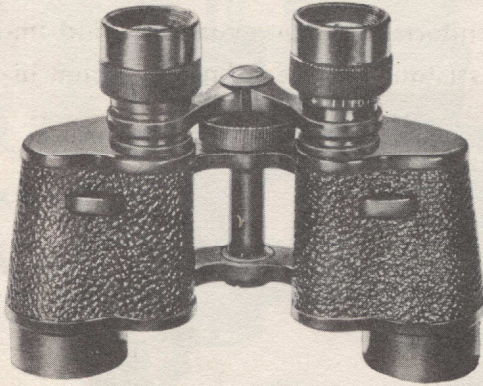
GERMAN BINOCULARS

SUPER GRADE - FEATHERWEIGHT

MADE IN WETZLAR

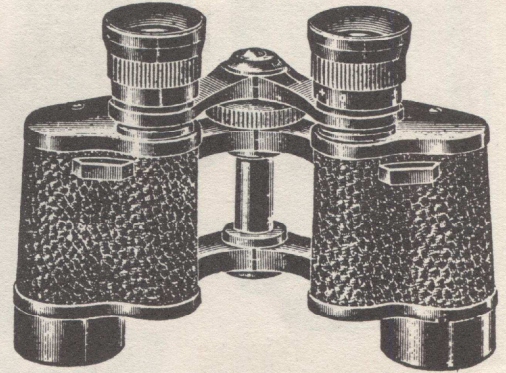


Precision German craftsmanship has designed these top quality glasses, to serve the needs of all sportsmen. Hard coated lenses of the finest workmanship assure sharply defined images at extreme range. For the hunter who wishes to avoid the bulkiness of regular binoculars, the compact Monocular is ideal. All with case.



#304
6x30
UNCOATED

MERCURY
Weight 12 ozs.

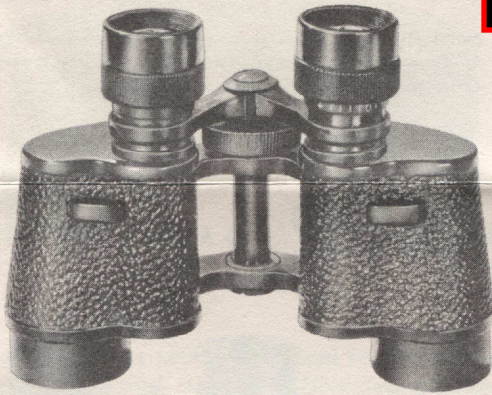


#308
8x30
UNCOATED

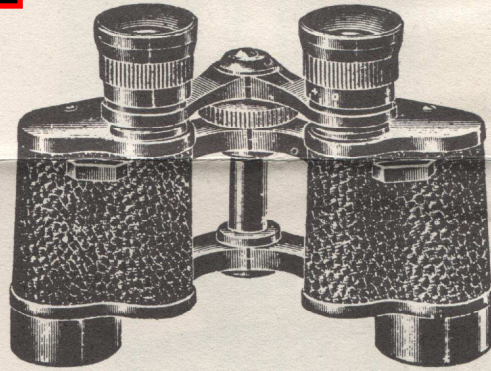
MERCURY
Weight 12 ozs.



#320
6x30
COATED



SPORTSTER
Weight 12 ozs.



#321
8x30
COATED

SPORTSTER
Weight 12 ozs.

#320M
6x30
COATED

#321M
8x30
COATED

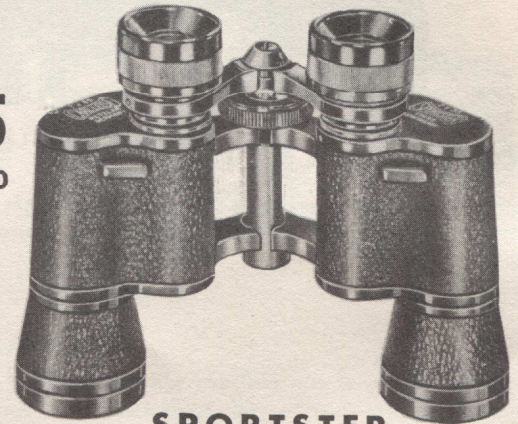
#304M
6x30
UNCOATED

#308M
8x30
UNCOATED



#325
7x35
COATED

MONOCULARS
Weight approx. 5½ ozs.



SPORTSTER
Weight 14 ozs.

#325M
7x35
COATED

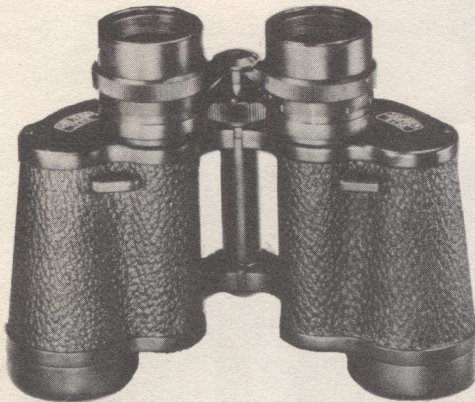


S. E. LASZLO IMPORTER
25 LAFAYETTE STREET • BROOKLYN 1, NEW YORK



ZEISS

THE ULTIMATE IN FINE BINOCULARS

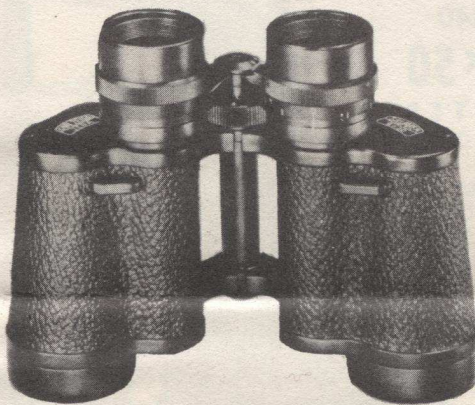


COATED

#328
6x30
SILVAMAR
INDIVIDUAL
FOCUS

#329
6x30
SILVAREM
CENTRAL
FOCUS

ZEISS is a name unequalled in optics; it continues to denote the finest binoculars in the world. Made to fill every need, fishermen, nature lovers, and outdoorsmen, generally will find these the perfect companion for their trips. On professional levels, engineers, architects and surveyors will find immeasurable assistance in these fine, precision instruments. To the sports enthusiast, these compact, lightweight glasses bring every detail of the game's action. Women will delight in the classic lines and smart styling of the precision-made Theatis models.



#330
DELTRINTEM
8x30 COATED
CENTRAL FOCUS

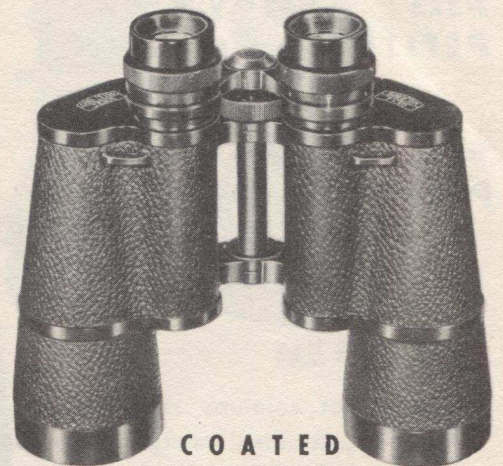
#331
BINOCTAR
7x50
INDIVIDUAL
FOCUS



COATED

#332
BINOCTEM
7x50
CENTRAL
FOCUS

#333
DECAREM
10x50
CENTRAL
FOCUS



COATED

THEATIS
3¹/₂ X COATED
CENTRAL FOCUS

#335 BLACK
#336 SILVER
#337 GOLD
#335C
Mirror fitted plush
case available
at additional cost.

#334
PENTEKAREM
15x50
CENTRAL
FOCUS



S. E. LASZLO IMPORTER
25 LAFAYETTE STREET • BROOKLYN 1, NEW YORK

POPULAR PRICED JAPANESE BINOCULARS

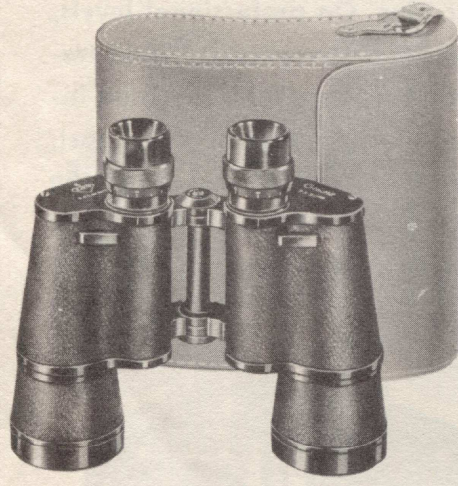
Japan has long been noted for the fine quality optics manufactured there.

Here is a selection of their best, top grade glasses. Unsurpassed for service and dependability.

SPORT CASE

WITH INDIVIDUAL FOCUS

HARD CASE



#314S
7x50
UNCOATED

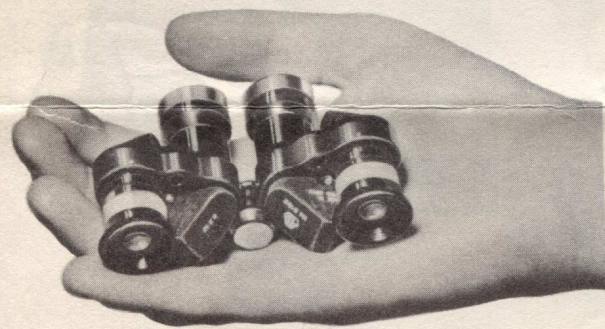
#314H
7x50
UNCOATED



#315S
7x50
COATED

#315H
7x50
COATED

#340
10x50
COATED



#323
PETITE **6x15**
UNCOATED



#324
PETITE **6x18**
COATED
IND. FOCUS

#322
PETITE **6x15**
COATED



B & L
TYPE
CONSTRUCTION
WITH
CENTER FOCUS

#341
6x30
COATED

#342
8x30
COATED

#326
7x35
COATED

 **S. E. LASZLO** IMPORTER
25 LAFAYETTE STREET • BROOKLYN 1, NEW YORK

FRENCH HIGH QUALITY OPERA AND FIELD GLASSES

VARSIITY

#352

4x43



Powerful, compact sports glass for football, baseball, racing. Large 43MM objectives give unusual clarity at long range. Has top quality optics and fixed sunshade. Complete with leather case.



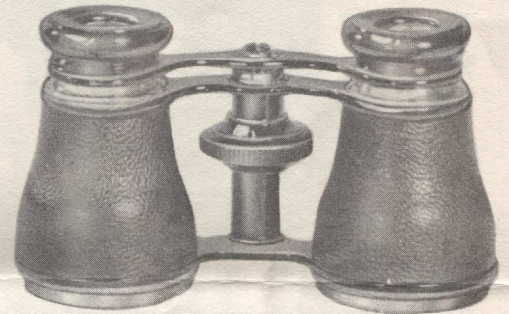
#346

2½x24

#347

2½x27

GOLD PLATED



METROPOLITAN

These fine quality pocket size glasses are ideal for opera enthusiasts. High grade achromatic lenses assure sharp brilliant images. Complete with Morocco leather pouch to fit into ladies' handbag. #347 Deluxe model is gold plated.

METROPOLITAN DELUXE



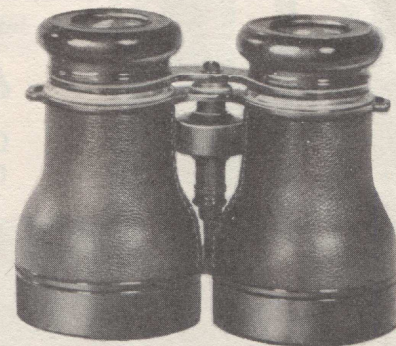
#349

3½x54

#358

3½x54

COATED



THOROBRED

The extremely large eyepiece makes this the perfect glass for Mariners, Aviators, and Sportsmen. Fully achromatic lenses give a wide field of view. Polished aluminum tube. Body has hand stitched leather covering.

NEPTUNE

This featherweight nightglass contains top quality coated lenses affording highest luminosity. For all sports; yachting and horseracing. Body has hand stitched covering.



S. E. LASZLO IMPORTER
25 LAFAYETTE STREET • BROOKLYN 1, NEW YORK

HIGH QUALITY OPERA AND FIELD GLASSES

The most popular miniature opera glass on the market. Precision made in every detail. Available in Black, Red, Green or Brown snakeskin or smooth body. Complete with genuine leather case.



REG. U. S. PAT. OFF.

**ASSORTED
COLORS**

#345
2½x25
(JAPANESE)
ONLY
¾ OUNCES

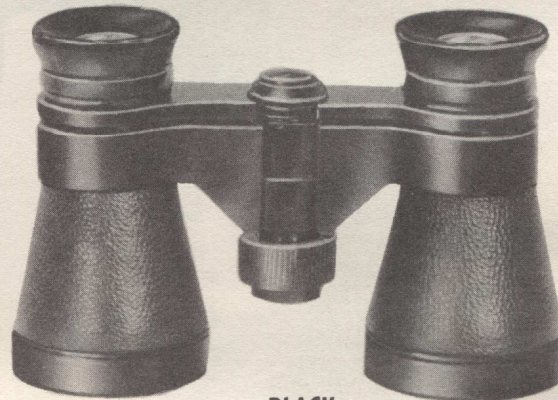
#354
3x27
(FRENCH)



GOLD PLATED

HARVARD

Handsome, gold plated field glass, with interpupillary eye adjustment. Brilliant image. For opera goers and sportsmen. Body covered in Blue, Green, Brown, or Red leather. With genuine leather case.

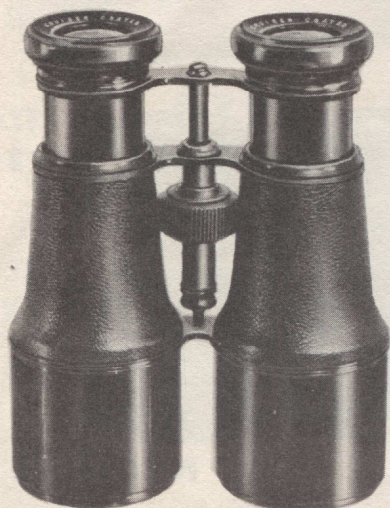


BLACK

#348
3x27
(FRENCH)

NOTRE DAME

Especially suited for bird study, sports and opera enthusiasts. Very compact, with fine grade optics. Interpupillary adjustment. Body is covered with genuine black Morocco leather. With genuine Morocco leather case.



#353
4½x47
COATED
(FRENCH)

CRUISER

Excellent all-around glass for sportsmen and travelers. Big precision coated lenses give clear well defined images. Extendable sunshade reduces glare. Complete with case.

MB

#359
4x40
COATED
(JAPANESE)

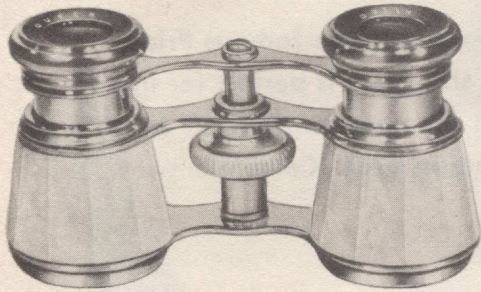
OFUNA

Ideal glass for all outdoor sports fans. Football, baseball, racing, etc. This top grade glass gives unusual clarity and definition of objects. Interpupillary adjustment. With genuine Pigskin leather case.



S. E. LASZLO IMPORTER
25 LAFAYETTE STREET • BROOKLYN 1, NEW YORK

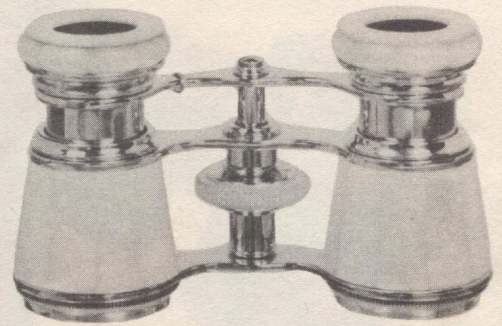
HIGH QUALITY OPERA AND FIELD GLASSES



#356
2½x25
GOLD PLATED
MOTHER PEARL
(FRENCH)

QUEEN

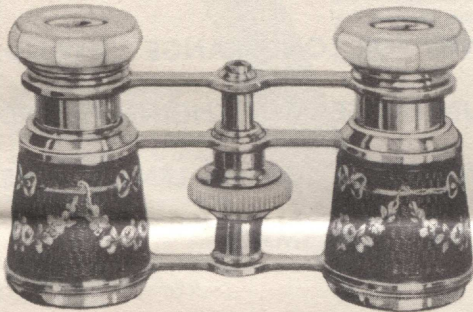
New, beautifully designed opera glass. Made of exquisite Mother of Pearl by French craftsmen. Eyepiece, crossbar and tubes are gold plated. Complete with leather pouch to fit into handbag. Available in either White, Beige or Black pearl.



#357
2½x25
GOLD PLATED
MOTHER PEARL
(FRENCH)

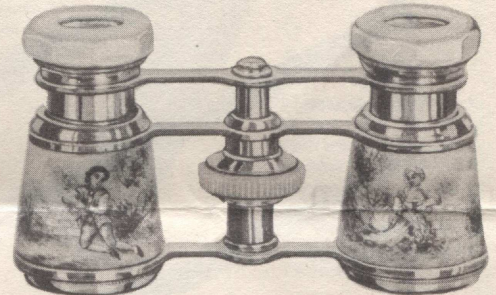
MARQUISE

This handsome opera glass is completely covered with inlaid Mother of Pearl. Crossbar and tubes are gold plated. Fine precision optics. Complete with Morocco leather pouch to fit into handbag. Available in either White, Beige or Black pearl.



floral designs

#360
2½x24
GOLD PLATED
(FRENCH)
BALLERINA
(hand painted)



18th century French paintings.

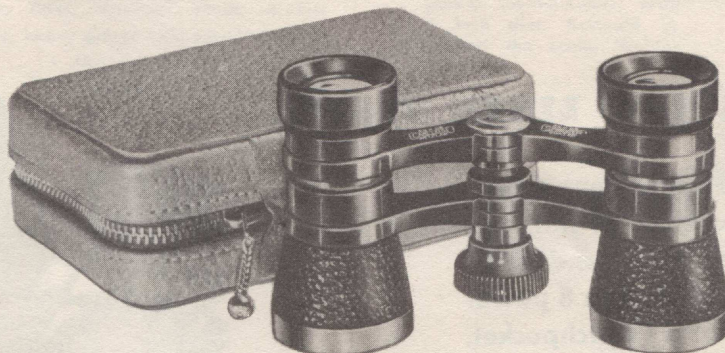


An outstanding pair of fine opera glasses. Beautiful tints and floral designs, or reproductions of famous 18th century French paintings. All skillfully rendered by artisans. Brilliant colors are baked into the glass for permanency. With beautiful pouch to fit into ladies' handbag.

SPORTSTER

EXCLUSIVE FEATURES

- Lightest of All Sports Glasses
- Made of Durable Magnesium
- Large Eye Pieces
- Interpupillary Adjustment
- Pocket Size
- With Red Leather Zipper Case

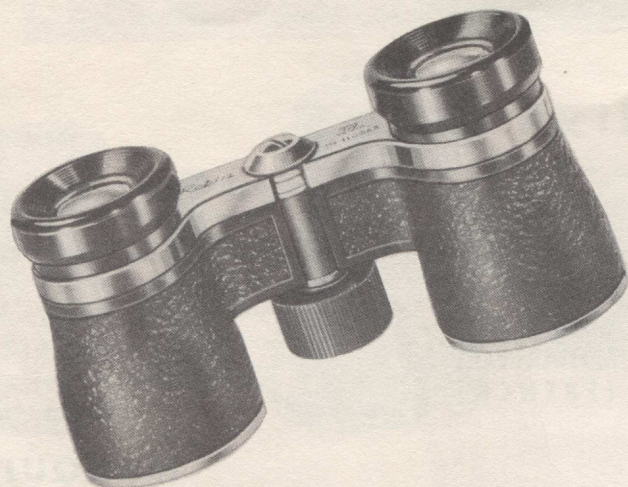


#355
3x28
COATED
(GERMAN)
3½ OUNCES



S. E. LASZLO IMPORTER
25 LAFAYETTE STREET • BROOKLYN 1, NEW YORK

ROBIN SPORT GLASS



#350

2 1/2 x 28

A worthy companion to the famous Pride. This fine pocket size glass is perfect for the opera goer and the sport enthusiast. Has interpupillary adjustment. Complete with leather case.

FRENCH PRECISION COATED 4 EXTENSION TELESCOPES

#403
25 POWER COATED

#402
20 POWER COATED

#401
15 POWER COATED

#400
10 POWER COATED

CLOSES TO
COMPACT, HANDY
CARRYING SIZE



HIGH QUALITY BRASS TELESCOPES,
DESIGNED FOR LONG RANGE VIEWING.
FOR HUNTERS, SEAMEN, ENGINEERS, AND
ASTRONOMERS. COATED LENSES GIVE
SHARP BRILLIANT IMAGE.

SHUTTER TYPE
DUST PROTECTOR
FOR EYE PIECE



BRASS COVER FOR LENS
PROTECTION WHEN NOT
IN USE



IMPORTED 'BRITEX' LINEN TESTER

An extremely proficient instrument that is compact and easy to use. Folds flat, has clearly marked scale in inches and millimeters. Lens diameter is 5/8", with 8 power magnification. Fits into a watchpocket. Complete with leather case.

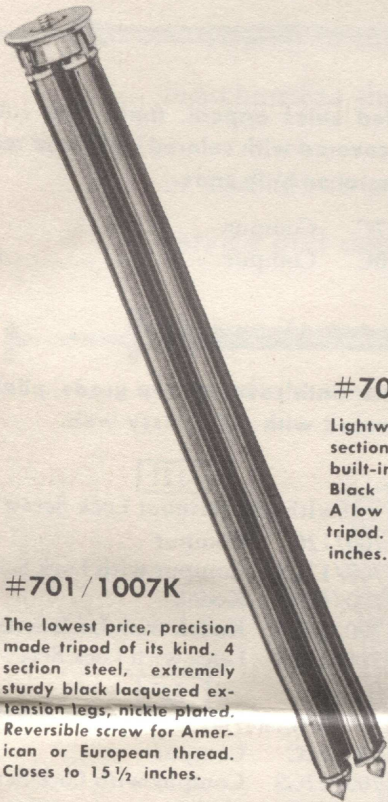


#390



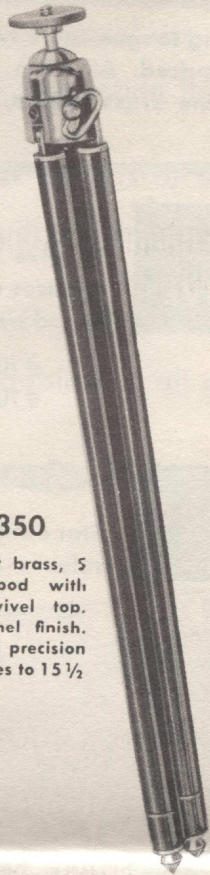
S. E. LASZLO IMPORTER
25 LAFAYETTE STREET • BROOKLYN 1, NEW YORK

**TOP QUALITY GERMAN TRIPODS
FULLY GUARANTEED**



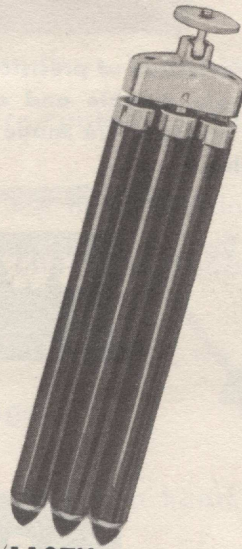
#701/1007K

The lowest price, precision made tripod of its kind. 4 section steel, extremely sturdy black lacquered extension legs, nickel plated. Reversible screw for American or European thread. Closes to 15 1/2 inches.



#704/350

Lightweight brass, 5 section tripod with built-in swivel top. Black enamel finish. A low price precision tripod. Closes to 15 1/2 inches.



#705/1107K

7 section pocket tripod with built-in swivel top. Precision made aluminum legs with rubber tips. Black hard rubber finish. Closes to 9 inches. Weighs only 11 ozs.



#703/555

5 section tripod made of specially hardened light metal tubes. Black enamel finish. A high grade piece of equipment. Reversible screw for American or European thread. Closes to 15 inches.



**IMPORTED FRENCH
CUT FILM HOLDERS**



For Kodak, Medalist, Recamar, Voigtlander, Zeiss, Maximar. Made of first quality, heavy gauge light proof material. Use for cut film or plate. Available in 3 1/4 x 4 1/4 and 2 1/4 x 3 1/4.

#378 6 x 9

#379 9 x 12

**IMPORTED SWISS
THERMOMETERS**

Precision made stainless steel pocket thermometers. With 1 inch dial. Accurate 1/2 around the scale. Weighs only 1 oz.



**#376
30-220F**

**#377
20-120F**



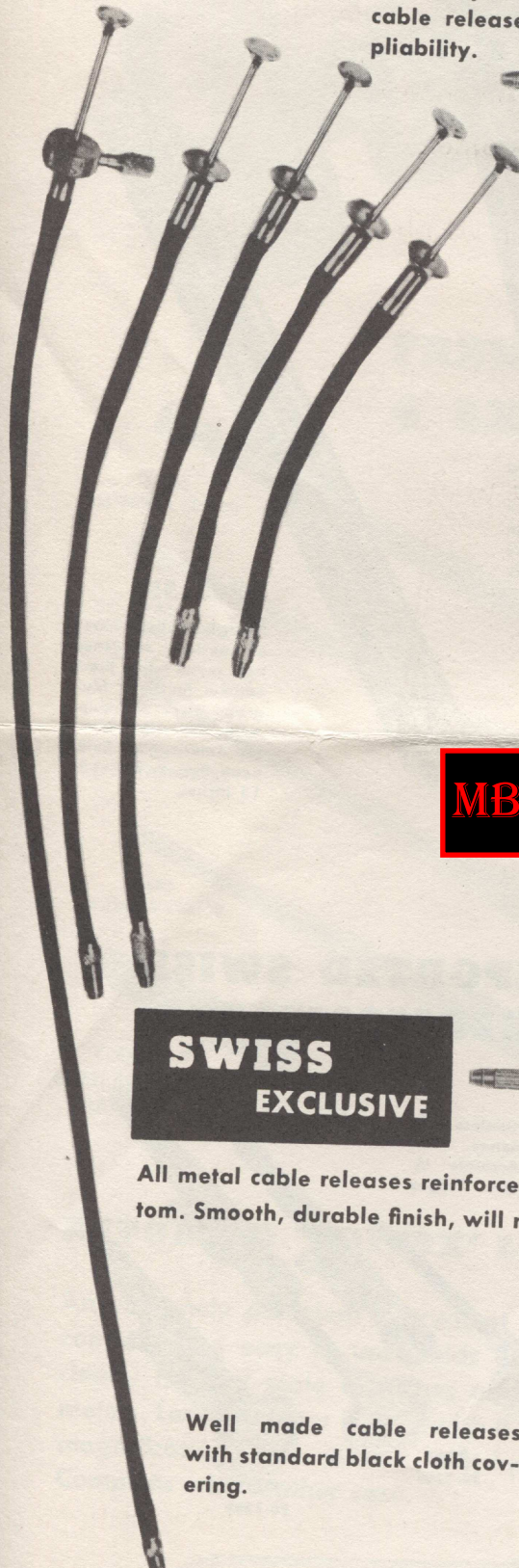
S. E. LASZLO IMPORTER
25 LAFAYETTE STREET • BROOKLYN 1, NEW YORK

COMPUR—KODAK
LEICA

**IMPORTED CABLE
RELEASES**

LENGTHS FROM
3 1/2" to 36"

A full selection of precision made, long tongue cable releases. All are extremely durable and attractively priced. All cloth covered Swiss cable releases are made with genuine Brass Spirals, giving added pliability.



**SWISS
EXCLUSIVE**

To give added sales appeal, these fine cable releases are covered with colored cloth and reinforced with metal on both ends.

- #707/ 7C Compur 7"
- #707/10C Compur 10"

SWISS

Standard black cloth covered. Top grade, pliable releases. Covered with soft glossy web.

- 3 1/2"
- #700/3 1/2C Compur
 - #700/3 1/2K Kodak

- 4 1/2"
- #700/4 1/2C Compur
 - #700/4 1/2K Kodak

- 7"
- #700/7C Compur
 - #700/7K Kodak

- 10"
- #700/10C Compur
 - #700/10K Kodak

- 12"
- (with and without Lock Screw)
- #700/12C Compur
 - #700/12CS Compur with Lock Screw
 - #700/12K Kodak
 - #700/12KS Kodak with Lock Screw
 - #700/12LS Leica with Lock Screw

- 22"
- (with and without Lock Screw)
- #700/22C Compur
 - #700/22CS Compur with Lock Screw
 - #700/22K Kodak
 - #700/22KS Kodak with Lock Screw

- 36"
- (with Hand Grip)
- #700/36C Compur

MB

**SWISS
EXCLUSIVE**

All metal cable releases reinforced top and bottom. Smooth, durable finish, will not stretch.

- #708/ 7 1/2C Compur 7 1/2"
- #708/10 1/2C Compur 10 1/2"

**GERMAN
LOW PRICE**

Well made cable releases with standard black cloth covering.

- 3 1/2"
- #706/3 1/2C Compur
 - #706/3 1/2K Kodak

- 4 3/4"
- #706/4 3/4C Compur
 - #706/4 3/4K Kodak

- 6 1/2"
- #706/6 1/2C Compur
 - #706/6 1/2K Kodak

- 10"
- #706/10C Compur
 - #706/10K Kodak

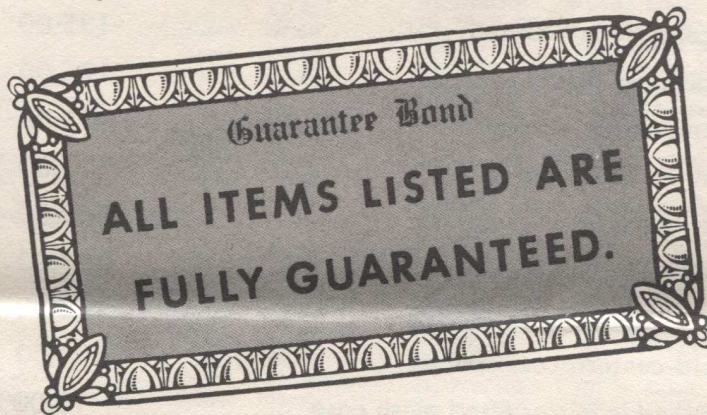
STATEMENT OF POLICY

S. E. Laszlo has made good use of his more than 20 years of experience in selecting the many interesting items that are contained in this catalog.

Voyaging to the far corners of the world, we have obtained exciting, new merchandise that will appeal to your most critical customer.

In addition to providing profitable items for the dealer, we pledge unstinting service and dependability in all our dealings.

In every instance, we endeavor to maintain stock on hand in New York for immediate delivery.



MB

TERMS

STOCKS:

Complete stocks maintained in New York. Prompt delivery.

PRICES:

Prices are list. Prices are subject to change without notice. Orders accepted are subject to our ability to secure merchandise.

TERMS:

2% 10 days, net 30 days from date of invoice, only. All shipments are FOB Brooklyn, N. Y. warehouse. Our responsibility ceases with the safe delivery in good condition to the carrier in New York. All claims for damages and shortages should be made by you to carrier. COD orders must accompany 25% deposit. No cash discount is allowed on invoices of less than \$5.00. All claims must be made within 5 days after receipt of merchandise.

Goods may not be returned to us without first having obtained our written consent. Return goods or repairs must be shipped to us prepaid.

Copyright 1951 — S. E. LASZLO IMPORTER



S. E. LASZLO IMPORTER
25 LAFAYETTE STREET • BROOKLYN 1, NEW YORK

WHOLESALE PRICE LIST

No. 19AA
IN EFFECT
OCTOBER 1, 1951

GENERAL DISCOUNT 50% with exceptions listed below

ZEISS BINOCULARS

PAGE 5

			<u>List</u>	<u>Net Prices</u>	
				<u>1-3 pcs.</u>	<u>4 or more</u>
#328	6x30	Silvamar, individual focus, coated.....	\$125.00	87.50	83.33
#329	6x30	Silvarem, centerfocus, coated.....	125.00	87.50	83.33
#330	8x30	Deltrintem centerfocus, coated.....	135.00	94.50	90.00
#331	7x50	Binoctar individual focus, coated.....	175.00	122.50	116.67
#332	7x50	Binoctem centerfocus, coated.....	175.00	122.50	116.67
#333	10x50	Decarem centerfocus, coated.....	195.00	136.50	130.00
#334	15x50	Pentekarem centerfocus, coated.....	250.00	175.00	166.67
#335	3 1/2 x	Theatis Black centerfocus, coated.....	100.00	70.00	66.67
#336	3 1/2 x	Theatis Silver centerfocus, coated.....	110.00	77.00	73.33
#337	3 1/2 x	Theatis Gold centerfocus, coated.....	120.00	84.00	80.00
#335C		Theatis supplied in mirror fitted plush case.....	10.00 <i>Extra</i>	7.00	6.67

TRIPODS

PAGE 11

	NET (tax included) EASTERN		NET (tax included) WESTERN	
	1-5	6 or more	1-5	6 or more
701/1007K.....	4.15	3.78	4.35	3.96
703/555.....	6.61	6.02	6.77	6.18
704/350.....	8.31	7.58	8.50	7.76
705/1107K.....	9.91	9.04	10.03	9.15

CABLE RELEASES

PAGE 12

GERMAN & SWISS ALL TYPES

1-11 of a size (tax included)..... **33 1/3 %**



12 or more of a size (tax included)..... **40%**

CUT ALONG THIS LINE

S. E. LASZLO

IMPORTER
25 LAFAYETTE STREET • BROOKLYN 1, NEW YORK



All prices below are list. On photographic equipment Federal Excise Tax is included. On opera, field glasses and binoculars 20% excise tax based on sale price is to be collected by seller. The telescopes, monoculars, linen testers and thermometers are tax free.

Page 2 STANDARD FRENCH BINOCULARS

No. 327	8x25	Aristocrat	\$42.50
No. 302	8x30	Aristocrat	50.00
No. 300	8x26	Normandie	43.50
No. 318	6x30	Normandie	50.00
No. 301	8x30	Normandie	51.00
No. 305	10x35	Normandie	75.00
No. 316	8x26	Mt. Rainiercoated	51.50
No. 338	6x30	Mt. Rainiercoated	58.00
No. 317	8x30	Mt. Rainiercoated	59.00

Page 3 DE LUXE FRENCH BINOCULARS

No. 306	8x25	Challenger	\$45.00
No. 303	8x30	Challenger	\$57.00
No. 312	8x30	Ile de Francecoated	67.00
No. 310	8x32	Ile de Francecoated	92.00

Page 4 WETZLAR, GERMAN BINOCULARS

No. 304	6x30	Mercury	\$59.50
No. 308	8x30	Mercury	65.50
No. 320	6x30	Sportstercoated	67.50
No. 321	8x30	Sportstercoated	73.50
No. 325	7x35	Sportstercoated	85.00
No. 304M	6x30	Monoculars	29.75
No. 308M	8x30	Monoculars	32.75
No. 320M	6x30	Monocularscoated	33.75
No. 321M	8x30	Monocularscoated	36.75
No. 325M	7x35	Monocularscoated	42.50

Page 5 CARL ZEISS GERMAN BINOCULARS

No. 328	6x30	Silvamar Ind. Focuscoated	\$125.00
No. 329	6x30	Silvarem Center Focuscoated	125.00
No. 330	6x30	Deltrintem Center Focuscoated	135.00
No. 331	7x50	Binoclar Ind. Focuscoated	175.00
No. 332	7x50	Binoclem Center Focuscoated	175.00
No. 333	10x50	Decarem Center Focuscoated	195.00
No. 334	15x50	Pentecarem Center Focuscoated	250.00
No. 335	3 1/2 x	Black Theatis Center Focuscoated	100.00
No. 336	3 1/2 x	Silver Theatis Center Focuscoated	110.00
No. 337	3 1/2 x	Gold Theatis Center Focuscoated	120.00
No. 335C		Vanity case for Theatis	10.00

Page 6 JAPANESE BINOCULARS

No. 314S	7x50	Zeiss style	\$53.00
No. 314H	7x50	Zeiss style	55.00
No. 315S	7x50	Zeiss stylecoated	57.00
No. 315H	7x50	Zeiss stylecoated	59.00
No. 340	10x50	Zeiss stylecoated	80.00
No. 323	6x15	Petite	25.00
No. 322	6x15	Petitecoated	27.00
No. 324	6x18	Petitecoated	33.00
No. 341	6x30	B & L stylecoated	65.00
No. 342	8x30	B & L stylecoated	70.00
No. 326	7x35	B & L stylecoated	75.00

Page 7 FRENCH OPERA & FIELD GLASSES

No. 346	2 1/2 x24	Metropolitan	\$16.50
No. 347	2 1/2 x27	Metropolitan deluxe gold	20.00
No. 349	3 1/2 x54	Thorobred	42.00
No. 358	3 1/2 x54	Neptunecoated	47.00
No. 352	4x43	Varsity	25.00

Page 8 OPERA & FIELD GLASSES

No. 345	2 1/2 x25	Pride	\$10.75
No. 348	3x27	Notre Dame	24.00
No. 354	3x27	Harvard	27.50
No. 353	4 1/2 x47	Cruisercoated	34.00
No. 359	4x40	Ofunacoated	22.00

Page 9 OPERA & FIELD GLASSES

No. 356	2 1/2 x25	Queen pearl/gold	\$35.00
No. 357	2 1/2 x25	Marquise pearl/gold	45.00
No. 360	2 1/2 x24	Ballerina gold	57.50
No. 355	3x28	Sportstercoated	29.75

Page 10 TELESCOPES, SPORT GLASS

No. 350	2 1/2 x28	Robin	\$15.00
No. 400	10x	4 sects. Telescopecoated	19.00
No. 401	15x	4 sects. Telescopecoated	32.50
No. 402	20x	4 sects. Telescopecoated	35.75
No. 403	25x	4 sects. Telescopecoated	46.50
No. 390		Britex linen tester	15.00

Page 11 GERMAN TRIPODS, ETC.

No. 701/1007K	4 sects. steel	West Coast	\$ 6.25	East Coast	\$ 5.95
No. 703/555	5 sects. aluminum		9.75		9.50
No. 704/350	5 sects. brass		12.25		11.95
No. 705/1107K	7 sects. aluminum		14.40		14.25
No. 376		Thermometer 30-220°F				3.95
No. 377		Thermometer 20-120°F				3.95
No. 378	6x9	Cut Film Holders				1.75
No. 379	9x12	Cut Film Holders				2.00

Page 12 SWISS & GERMAN CABLE RELEASES

SWISS black cloth highgrade

No. 700/3 1/2 C	3 1/2"	Compur	\$.65
No. 700/3 1/2 K	3 1/2"	Kodak65
No. 700/4 1/2 C	4 1/2"	Compur70
No. 700/4 1/2 K	4 1/2"	Kodak70
No. 700/7C	7"	Compur80
No. 700/7K	7"	Kodak80
No. 700/10C	10"	Compur90
No. 700/10K	10"	Kodak90
No. 700/12C	12"	Compur	1.00
No. 700/12CS	12"	Compur w/lk screw	1.25
No. 700/12K	12"	Kodak	1.00
No. 700/12KS	12"	Kodak w/lk screw	1.25
No. 700/12LS	12"	Leica w/lk screw	1.50
No. 700/22C	22"	Compur	1.90
No. 700/22CS	22"	Compur w/lk screw	2.15
No. 700/22K	22"	Kodak	1.90
No. 700/22KS	22"	Kodak w/lk screw	2.15
No. 700/36C	36"	Compur w/hand grip	3.95

SWISS colored cloth, exclusive design

No. 707/7C	7"	Compur	1.05
No. 707/10C	10"	Compur	1.15

SWISS metal cable high quality

No. 708/7 1/2 C	7 1/2"	Compur	1.15
No. 708/10 1/2 C	10 1/2"	Compur	1.25

GERMAN black cloth

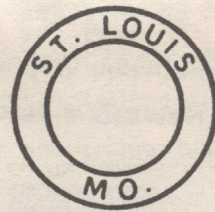
No. 706/3 1/2 C	3 1/2"	Compur35
No. 706/3 1/2 K	3 1/2"	Kodak35
No. 706/4 3/4 C	4 3/4"	Compur40
No. 706/4 3/4 K	4 3/4"	Kodak40
No. 706/6 1/2 C	6 1/2"	Compur45
No. 706/6 1/2 K	6 1/2"	Kodak45
No. 706/10C	10"	Compur50
No. 706/10K	10"	Kodak50



S. E. LASZLO IMPORTER
25 LAFAYETTE STREET • BROOKLYN 1, NEW YORK

MB

 **S. E. LASZLO** IMPORTER
25 LAFAYETTE STREET • BROOKLYN 1, NEW YORK



Sec. 34.66, P. L. & R.



A 3-54 87156 5z
Mr. George W. Shitney, Jr.
Whit's Gun Shop
115 E. Main St.
Fredonia, New York