



# OPTICAL SPECIALTIES

MB

43 WEST 23rd ST.

SELSI COMPANY, INC.  
*Importers*

NEW YORK

WE take pleasure in presenting this general catalog covering the principal and most popular styles of our various lines including the long established and well known

LEMAIRE COLMONT & BUSCH  
PRISM BINOCULARS  
FIELD & OPERA GLASSES

OTHER PRISM, FIELD AND OPERA GLASSES

SELSI E. VION & BUSCH



TELESCOPES

SELSI BAROMETERS & HYGROMETERS

---

READERS & MAGNIFIERS

COMPASSES

GOGGLES

PEDOMETERS

SUNDRIES

In addition, we have many other styles in the various lines and will be pleased to furnish information upon request.

We hope this will aid our customers to make their selection and help them in dealing with the prospective retail purchaser.

SELSI COMPANY, INC.

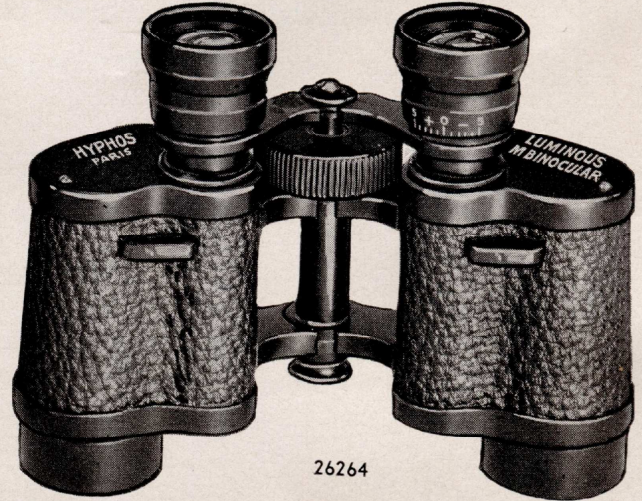
## "HYPHOS" AND "STEREOPHOS" Prism Binoculars

Good quality, substantial construction, bodies of aluminum alloy covered with black vulcanite, dull japanned mountings. Jointed bars for interpupillary adjustment. Universal focussing with separately focussing right eyepiece to regulate the difference in vision, if any, between the eyes. Improved style heads, genuine large oculars. Loops and neck strap, in stiff leather case with shoulder strap.



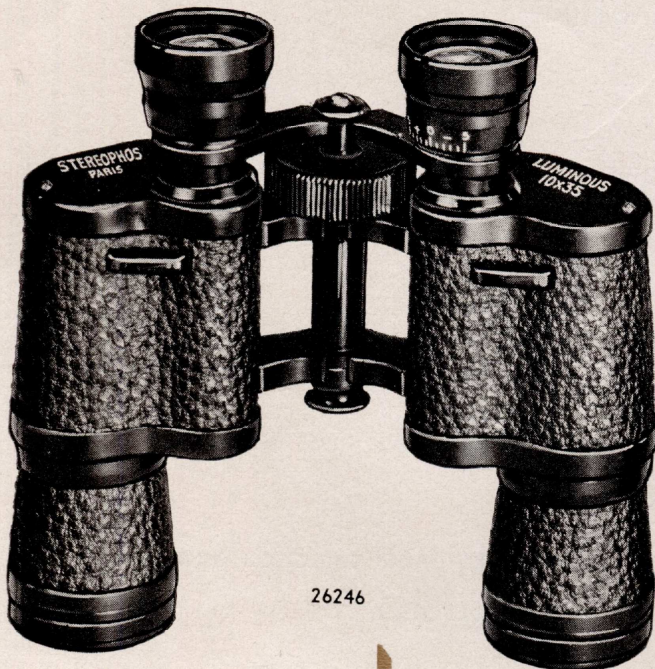
26265

SPECIFICATIONS



26264

	NO.	POWER	OBJECTIVE SIZE	OCULAR SIZE	FIELD AT 1000 YDS.	HEIGHT	WEIGHT OF GLASS
HYPHOS	26265	6X	26mm	15mm	115 Yds.	4"	18 oz.
HYPHOS	26265	8X	26mm	15mm	110 Yds.	4"	18 oz.
HYPHOS	26264	6X	30mm	18mm	125 Yds.	45/8"	23 1/2 oz.
HYPHOS	26264	8X	30mm	18mm	120 Yds.	45/8"	23 1/2 oz.



26246

SPECIFICATIONS



26297

	NO.	POWER	OBJECTIVE SIZE	OCULAR SIZE	FIELD AT 1000 YDS.	HEIGHT	WEIGHT OF GLASS
STEREOPHOS	26246	10X	35mm	18mm	100 Yds.	6"	27 oz.
STEREOPHOS	26297	12X	37mm	18mm	80 Yds.	7 1/8"	30 oz.

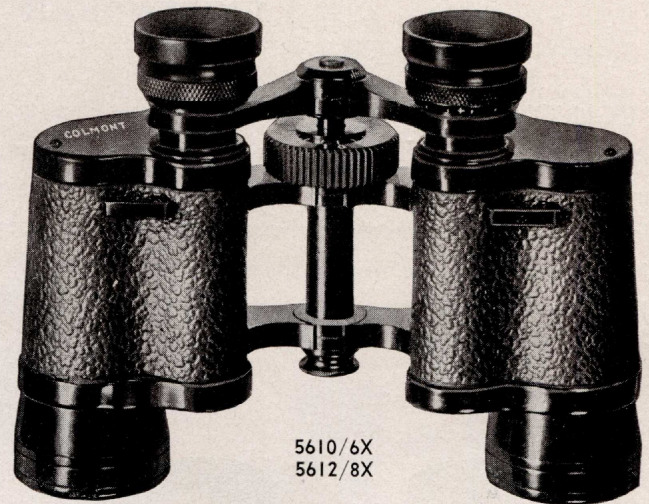


# Colmont Prism Binoculars

Fine quality, substantial construction, bodies of aluminum alloy covered with black vulcanite, dull japanned mountings. Jointed bars for interpupillary adjustment. Universal focussing with separately focussing right eyepiece to regulate the difference in vision, if any, between the eyes. Improved style heads, genuine large oculars. Loops and neck strap, in stiff leather case with shoulder strap, excepting styles 5617—5618—5648 which are furnished in leather sport cases.



5600/6X  
5602/8X



5610/6X  
5612/8X

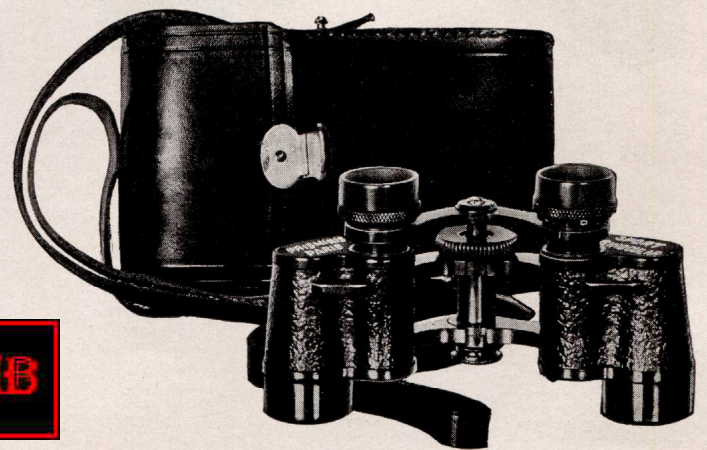
### SPECIFICATIONS

	NO.	POWER	OBJECTIVE SIZE	OCULAR SIZE	FIELD AT 1000 YDS.	HEIGHT	WEIGHT OF GLASS
COLMONT	5600	6X	25mm	16mm	115 Yds.	4"	18 oz.
COLMONT	5602	8X	25mm	16mm	110 Yds.	4"	18 oz.
COLMONT	5610	6X	34mm	16mm	135 Yds.	4 3/4"	22 1/2 oz.
COLMONT	5612	8X	34mm	16mm	130 Yds.	4 3/4"	22 1/2 oz.

## Compact Pocket Models



5617/6X  
5618/8X



5648/6X

### SPECIFICATIONS

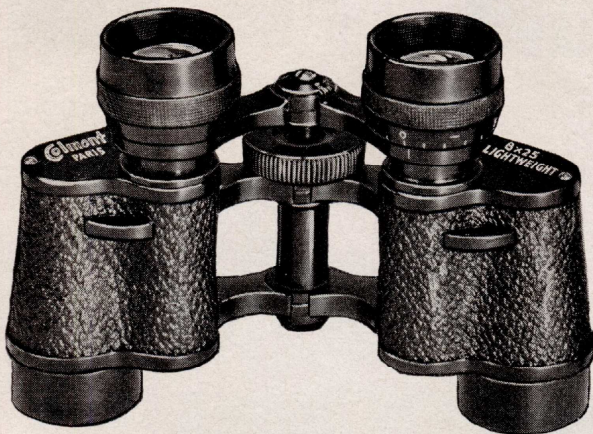
	NO.	POWER	OBJECTIVE SIZE	OCULAR SIZE	FIELD AT 1000 YDS.	HEIGHT	WEIGHT OF GLASS
COLMONT	5617	6X	22mm	17mm	130 Yds.	3 1/4"	11 oz.
COLMONT	5618	8X	22mm	17mm	125 Yds.	3 1/4"	11 oz.
PRISMIRIS	5648	6X	23mm	13mm	110 Yds.	3 1/8"	12 oz.





## Lightweight Prism Binoculars

"COLMONT" Lightweight Prism Binoculars. Fine quality; practically all metal parts of special lightweight metal. Although only about half the weight these glasses are as substantially constructed as similar binoculars made of the usual aluminum alloy. Bodies covered with rough grained black vulcanite, dull japanned mountings. Jointed bars for interpupillary adjustment. Universal focussing with separately focussing right eyepiece, to regulate the difference in vision, if any, between the eyes. Improved style heads, exceptionally large oculars. Loops and neck strap. Furnished in sole leather case with shoulder strap.



26404

26404/8X

### SPECIFICATIONS

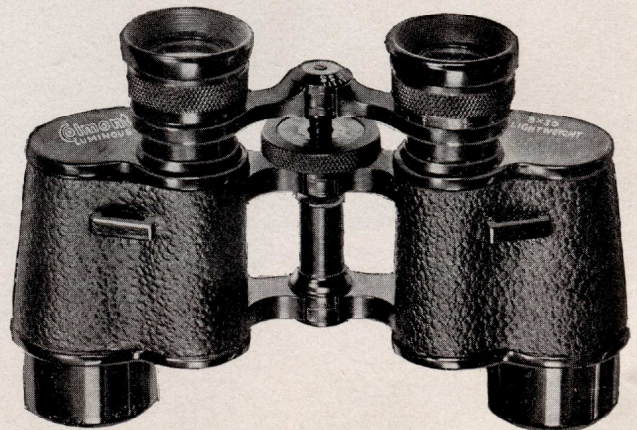
POWER	8X
OBJECTIVE SIZE	25mm
FIELD OF VIEW AT 1000 YDS.	120 YDS.
WEIGHT (WITHOUT CASE)	12½ OZ.
SIZE OF OCULAR	15mm
HEIGHT	4"



26397/8X

### SPECIFICATIONS

POWER	8X
OBJECTIVE SIZE	30mm
FIELD OF VIEW AT 1000 YDS.	130 YDS.
WEIGHT (WITHOUT CASE)	14 OZ.
SIZE OF OCULAR	20mm
HEIGHT	4¼"



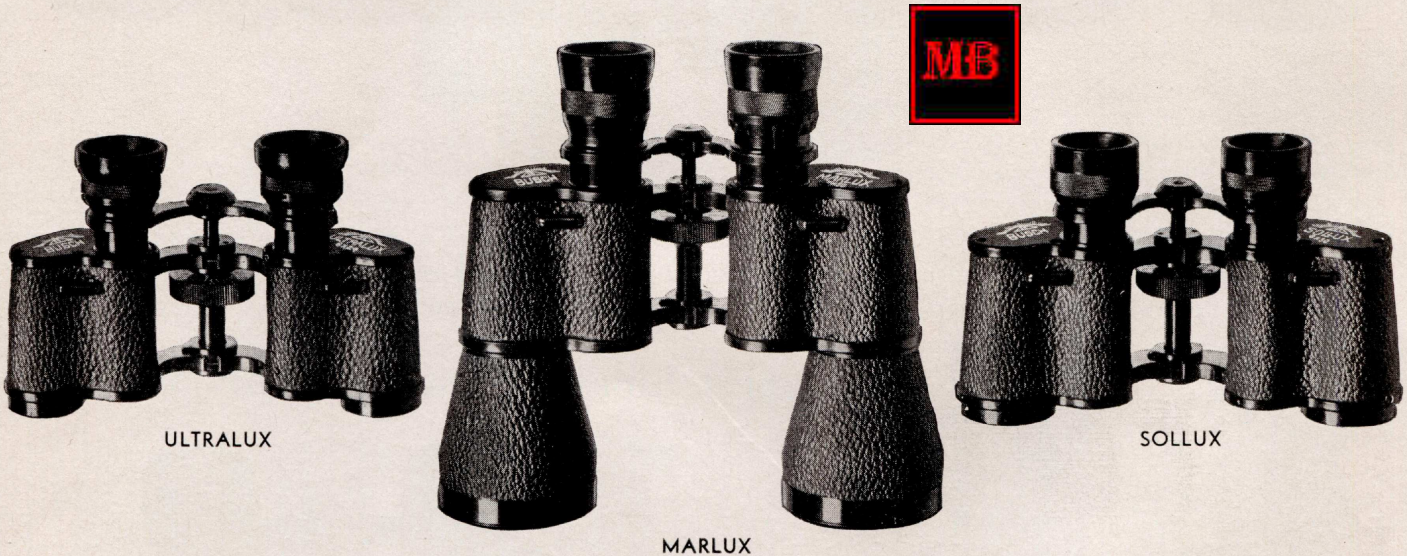
26397

# Busch

LIGHTWEIGHT

## PRISM BINOCULARS

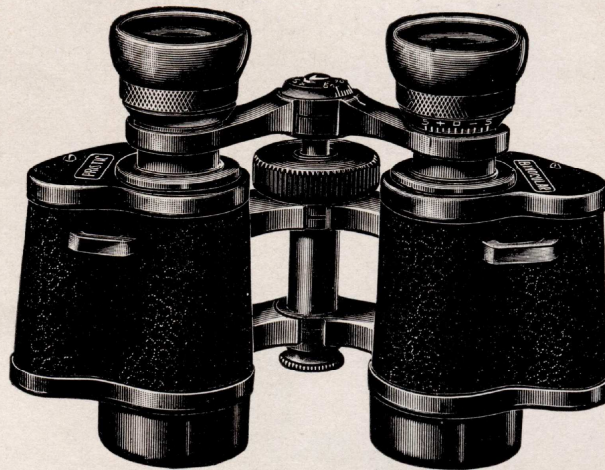
Superior quality and finish. Practically all metal parts of special lightweight metal. Although much lighter in weight than the former models, these binoculars are just as substantial in construction. Bodies covered with rough grained black vulcanite, dull japanned mounting. Jointed bars for interpupillary adjustment. Universal focussing with separately focussing right eye piece to regulate the difference in vision, if any, between the eyes. With neck strap and furnished in sole leather case with shoulder strap.



MODEL	CLEAR APERTURE	FIELD AT 1000 YDS.	LIGHT VALUE	OCULAR SIZE	HEIGHT	WEIGHT OF GLASS
<b>ULTRALUX</b>						
6040/6X	24mm	150 Yds.	16	14mm	4"	13 oz.
6042/8X	24mm	150 Yds.	9	11mm	4"	13 oz.
<b>SOLLUX</b>						
6046/6X	30mm	150 Yds.	25	12mm	4 <sup>1</sup> / <sub>4</sub> "	16 <sup>1</sup> / <sub>2</sub> oz.
6048/8X	30mm	140 Yds.	14	19mm	4 <sup>1</sup> / <sub>4</sub> "	17 oz.
<b>HELLUX</b>						
6120/6X	36mm	190 Yds.	36	18mm	4 <sup>1</sup> / <sub>4</sub> "	25 <sup>1</sup> / <sub>2</sub> oz.
<b>MARLUX</b>						
6124/7X	50mm	128 Yds.	51	16mm	6 <sup>1</sup> / <sub>2</sub> "	34 oz.
6128/10X	60mm	111 Yds.	36	18 <sup>1</sup> / <sub>2</sub> mm	7 <sup>3</sup> / <sub>4</sub> "	42 <sup>1</sup> / <sub>2</sub> oz.

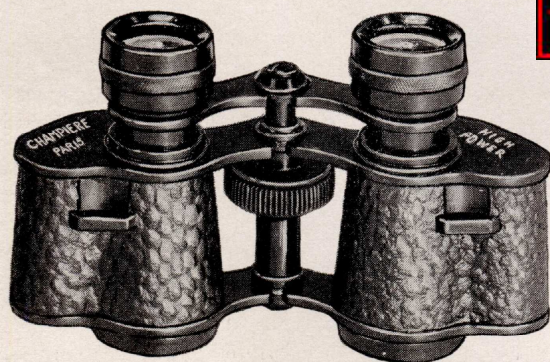
## Imitation Binoculars

ACHROMATIC

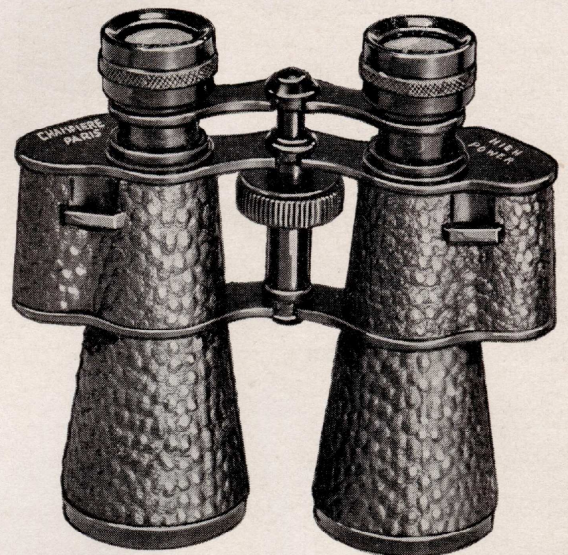


26252

**26252** "PRISTIRIS," Fine quality and finish, substantially constructed. Bodies of aluminum alloy covered with black rough grain vulcanite, black japanned mounting, jointed bars. Loops and neck strap. In binocular style black leather case with shoulder strap. Objective size 30mm. Height 4", Power 4X.



26406



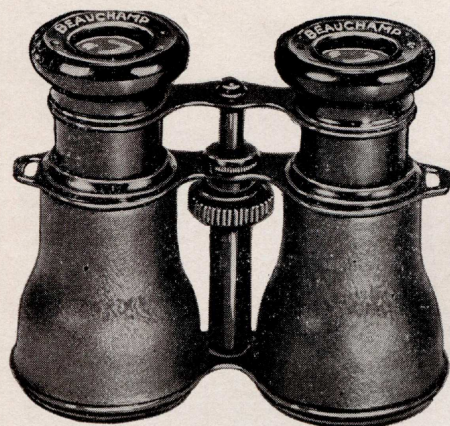
26407

**26406** "CHAMPIERE," Good quality and construction. Metal bodies leather grain and black japanned, black japanned mounting, jointed bars, large oculars. Loops and neck strap. In tan "Sport Case" with shoulder strap. Objective size 25mm. Height 3 1/8".

**26407** Same but with extension cones. Objective size 35mm. Height 5 1/8".

GOOD QUALITY

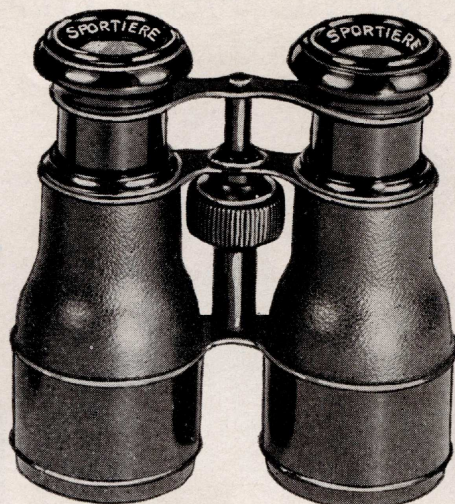
Non-Achromatic



26251

26251 "BEAUCHAMP" bodies covered with black morocco leather, bright black japanned mounting, dull japanned tubes. Loops and neck strap. In artificial leather case with leather shoulder strap. Objective size 19 Lignes. Height closed 3 1/4", extended 4 3/8".

26324 Similar to 26251 but with dull japanned imitation sunshades.

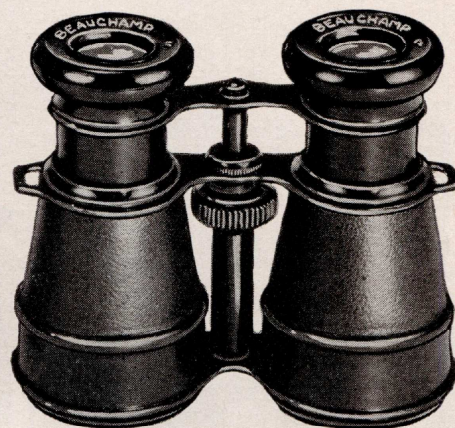


26398

26398 "SPORTIERE" bodies covered with black morocco leather, bright black japanned mounting and imitation sunshades. In artificial leather case with leather shoulder strap. Objective size 19 Lignes. Height closed 4 1/4", extended 5 1/8".

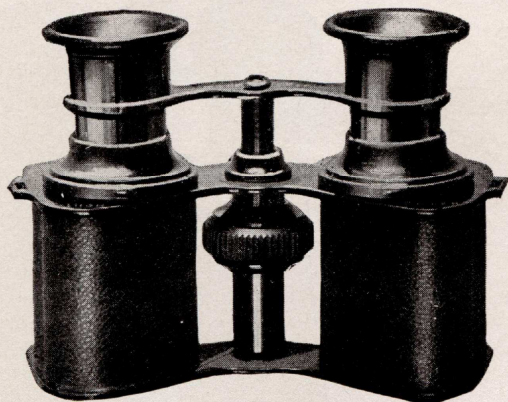
26399 Same but bodies covered with tan leather.

Field Glasses



26324

Other Non-Achromatic Field Glasses



19241A

19241A "SPORTIERE" Imitation binocular. Bodies covered with rough grain artificial leather, black japanned mounting. Plates engraved "HIGH POWER." Loops and neck strap. In artificial leather case with leather shoulder strap. Objective size 12 Lignes. Height closed 3 1/4", extended 3 3/4".

26333 "SPORTIERE" bodies covered with black morocco leather, black japanned mounting. Imitation sunshades. Tubes engraved "ARMY & NAVY." In black artificial leather case with leather shoulder strap. Objective size 24 Lignes. Height closed 6 1/2", extended 7 1/2".

26316 Same but bodies covered with tan leather.

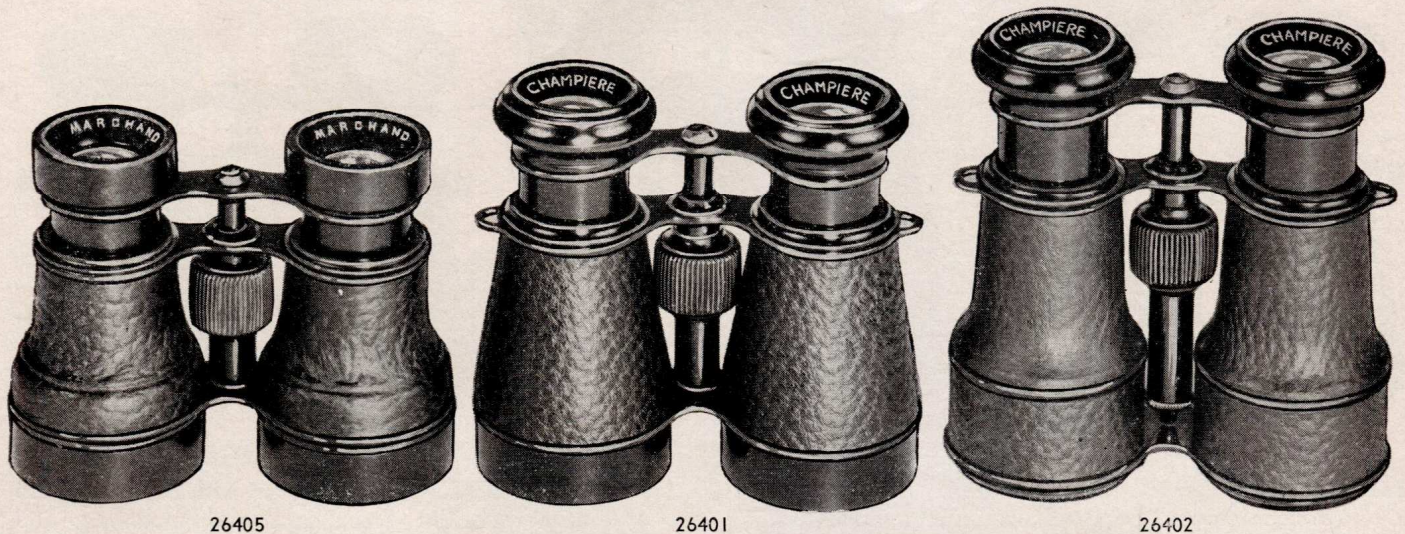


26333



## ACHROMATIC FIELD GLASSES

GOOD QUALITY



- 26405** "MARCHAND" bodies covered with rough grain black leather, dull black japanned mounting and stationary sunshades. In tan "Sport Case" with shoulder strap. Objective size 19 Lignes. Height closed  $3\frac{1}{4}$ ", extended  $3\frac{7}{8}$ ".
- 26401** "CHAMPIERE" conical bodies covered with rough grain black leather, black japanned mounting and stationary sunshades. Loops and neck cord. In black leather case with shoulder strap. Objective size 19 Lignes. Height closed  $3\frac{5}{8}$ ", extended  $4\frac{5}{8}$ ".
- 26402** "CHAMPIERE" bodies covered with rough grain black leather, black japanned mounting; imitation sunshades. Loops and neck cord. In black leather case with shoulder strap. Objective size 19 Lignes. Height closed 4", extended  $5\frac{3}{8}$ ".



26370



26171

- 26370** "MARCHAND" two-bar construction. Conical bodies covered with rough black leather, black japanned mounting. Large oculars. Loops and neck strap. In black leather case with shoulder strap. Objective size 19 Lignes. Height closed 4", extended 5".
- 26171** "IRIS" eight lenses. Bodies covered with black morocco leather, bright black japanned mounting, dull japanned tubes; imitation sunshades. Loops and neck strap. Compass on upper bar, tubes engraved "ARMY," "LONG RANGE." In artificial leather case with leather shoulder strap. Objective size 19 Lignes. Height closed  $4\frac{1}{2}$ ", extended  $6\frac{1}{4}$ ".
- 26292** Same but no compass and without engraving on tubes.
- 26205** Like 26292 but bodies covered with grained tan leather, black oxidized mounting.



# COLMONT

PARIS

THESE MARKS IDENTIFY THE GENUINE GLASSES  
FINE QUALITY

TRADE MARK



On Under Side  
of Middle Bar



26380

### Sport Glasses

**26380** Two-bar construction. Bodies of aluminum alloy covered with black grained vulcanite, black japanned mounting. Loops and neck strap. In black leather sport case with shoulder strap. Magnification, 4X; Objective Size, 40mm; Field at 1000 Yds., 110 Yds.; Height Closed, 4"; Extended 4 3/4".

**26277** Brass bodies covered with black leather, black japanned mounting. Loops and neck strap. In stiff leather case with shoulder strap.

OBJECTIVE SIZE	HEIGHT CLOSED	HEIGHT EXTENDED
19 Lignes	3 1/8"	4 1/4"



26277



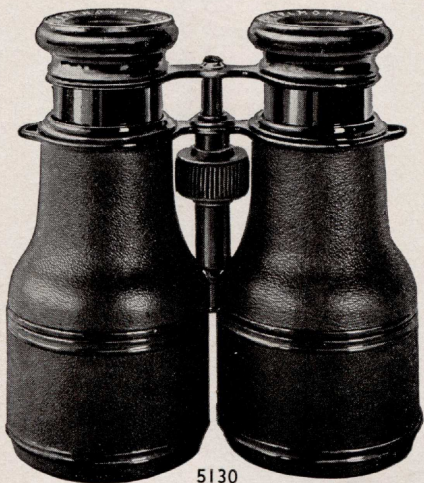
26262

### Race Glasses

**26259** Low shape, brass bodies covered with black leather, black japanned mounting. Loops and neck strap. In black leather case with shoulder strap.  
OBJECTIVE SIZE      HEIGHT CLOSED      HEIGHT EXTENDED  
24 Lignes                      3 3/8"                      4"

**26262** Same but aluminum bodies covered with black leather, polished aluminum mounting.

**26263** Like 26262 but bodies covered with tan leather, tan case.

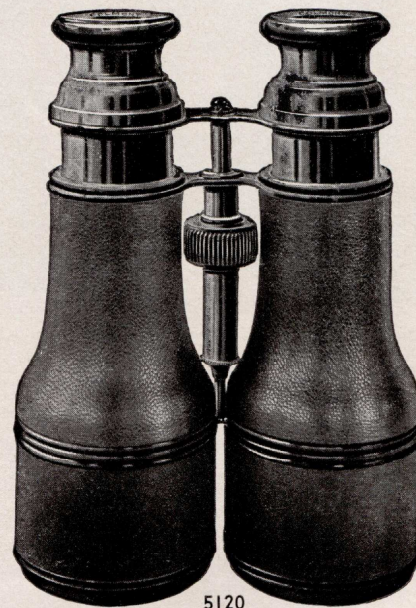


5130

### Marine Glasses

**5130** Low shape, low tops; brass bodies covered with grained black leather, black japanned mounting. Movable leather covered sunshades. Loops and neck strap. In stiff leather case with shoulder strap.

OBJECTIVE SIZE	HEIGHT CLOSED	HEIGHT EXTENDED
24 Lignes	4 3/8"	5 1/2"
26 "	4 7/8"	6"



5120

### Field Glasses

**5120** High shape, high tops; brass bodies covered with grained black leather, black japanned mounting. Movable leather covered sunshades. In stiff leather case with shoulder strap.

OBJECTIVE SIZE	HEIGHT CLOSED	HEIGHT EXTENDED
24 Lignes	6"	7 1/4"
26 "	6 1/2"	7 3/4"

**26273** Similar to above but objective size 19 lignes. Height closed 5". Height extended 6 1/4".



# LEMAIRE

PARIS

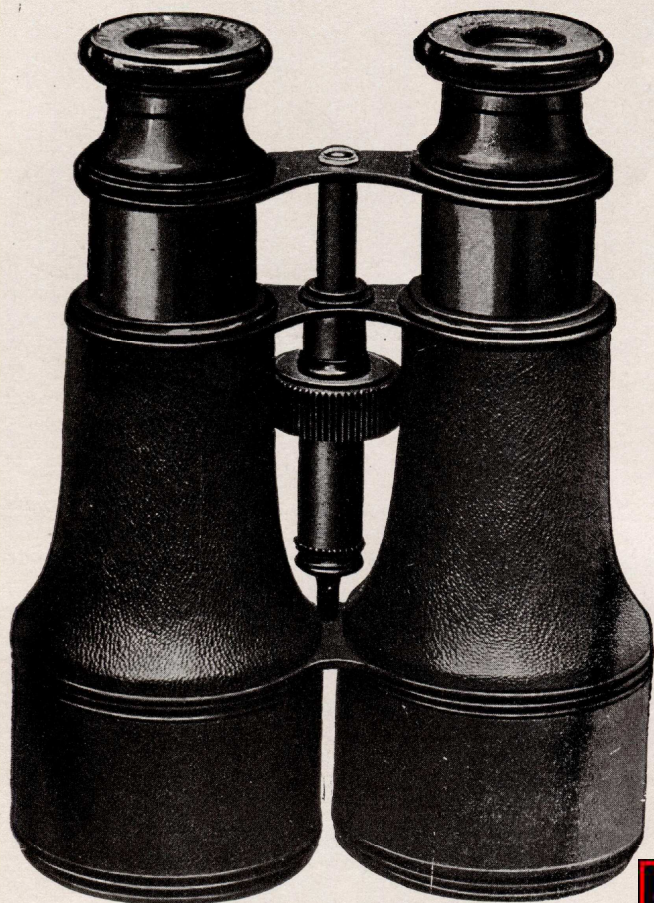
ALL GENUINE GLASSES BEAR THESE MARKS

## Field and Marine Glasses

TRADE MARK



On Under Side of Middle Bar



1050



**1050** High shape, high tops. Brass bodies covered with black morocco leather. Movable, leather covered sunshades. Black japanned mounting. In stiff leather case with shoulder strap.

OBJECTIVE SIZE	HEIGHT CLOSED	HEIGHT EXTENDED
21 Lignes	5 1/4"	6 3/8"
24 "	5 3/4"	7 1/8"
26 "	6 1/4"	7 5/8"

**1052** Same but with jointed bars. Sizes and specifications as above.

**7967** Same as 1050 but with low tops.

OBJECTIVE SIZE	HEIGHT CLOSED	HEIGHT EXTENDED
21 Lignes	5"	6 1/8"
24 "	5 1/2"	6 3/4"
26 "	6"	7 3/8"

**1055** "Grand Power" Similar to 1050 but higher shape. Extra strong.

OBJECTIVE SIZE	HEIGHT CLOSED	HEIGHT EXTENDED
26 Lignes	7 1/8"	8 3/4"

**8949** Low shape, low tops. Brass bodies covered with black morocco leather. Movable, leather covered sunshades. Black japanned mounting. In stiff leather case with shoulder strap.

OBJECTIVE SIZE	HEIGHT CLOSED	HEIGHT EXTENDED
21 Lignes	4"	5"
24 "	4 3/8"	5 3/8"
26 "	4 7/8"	6 1/8"

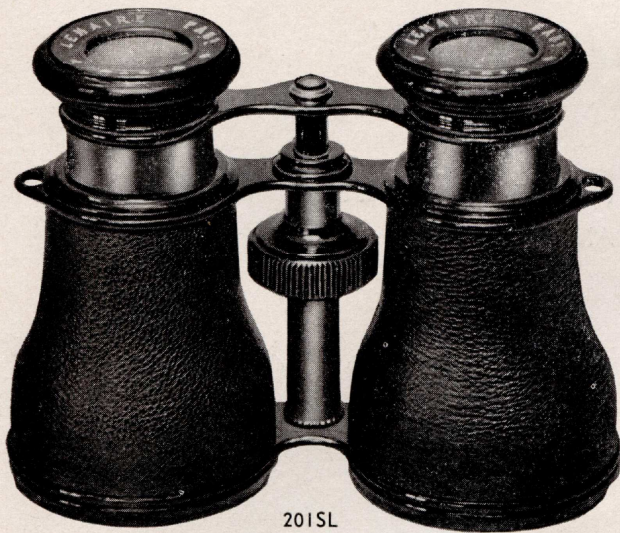
**1062** Same as above but aluminum and with polished aluminum tubes.

Sizes and specifications as above.

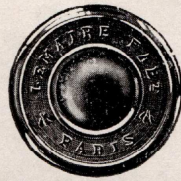


8949

For extras such as "12 Lenses" & "Jointed Bars" see page 58.



201SL



**LEMAIRE**

PARIS

ALL GENUINE GLASSES  
BEAR THESE MARKS

TRADE MARK



On Under Side  
of Middle Bar

**Bird and Race Glasses**

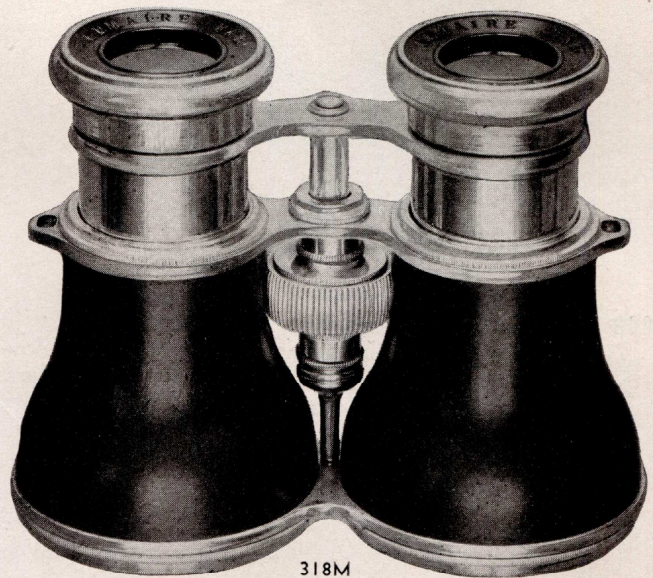
**201SL** Brass bodies covered with black morocco leather, black jappaned mounting. Loops and neck strap. In stiff leather case with shoulder strap.

OBJECTIVE SIZE	HEIGHT CLOSED	HEIGHT EXTENDED
19 Lignes	3"	4 1/8"
21 "	3 1/4"	4 1/4"
24 "	3 3/4"	4 7/8"
26 "	4"	5 1/8"

**Pocket Field Glasses**



1054



318M

**318** Aluminum bodies covered with tan calf leather, all polished aluminum mounting. In stiff tan leather case with shoulder strap.

OBJECTIVE SIZE	HEIGHT CLOSED	HEIGHT EXTENDED
24 Lignes	3 7/8"	5"

**318M** Similar to 318 but lower shape and with loops and neck strap.

OBJECTIVE SIZE	HEIGHT CLOSED	HEIGHT EXTENDED
24 Lignes	3 3/8"	4 1/4"

**318B** Same as 318, but bodies covered with black morocco leather, aluminum black jappaned mounting, polished tubes. In stiff black leather case with shoulder strap.

**318BM** Similar to 318B but lower shape and with loops and neck strap. Size and specifications like 318M.

**1054** Cone shape brass bodies covered with black morocco leather, black jappaned mounting. In soft morocco case with shoulder strap.

OBJECTIVE SIZE	HEIGHT CLOSED	HEIGHT EXTENDED
15 Lignes	3 5/8"	5"
17 "	4"	5 1/2"
19 "	4 3/8"	6"
21 "	4 3/4"	6 1/2"

For extras such as "12 Lenses" & "Jointed Bars" see page 58.

# Busch

## Field, Marine and Race Glasses

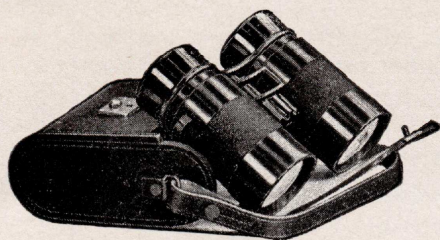
SUPERIOR QUALITY AND FINISH



888

**888** Low shape, low tops, brass bodies covered with black seal leather, black japanned mounting. Movable leather covered sunshades. Large oculars. Loops and neck strap. In fine sole leather case with shoulder strap.

OBJECTIVE SIZE	HEIGHT CLOSED	HEIGHT EXTENDED
24 Lignes	4 1/4"	5"
26 "	4 3/4"	5 5/8"

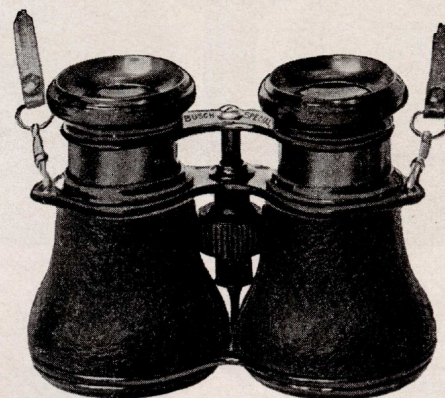


882C

**882C** Cylindrical bodies and heads. Brass bodies covered with black morocco leather, black japanned mounting. Vulcanite heads with large oculars. Jointed bars for interpupillary adjustment. Loops and neck strap. Excellent illumination and field.

**SPECIFICATIONS**

Power, 3 1/2X; Diameter of object lenses, 38mm; Field of view at 1000 yds., 172 yds.; Height, 3 1/4"; Weight, 12 oz. In fine black leather "Sport Case" with neck strap.

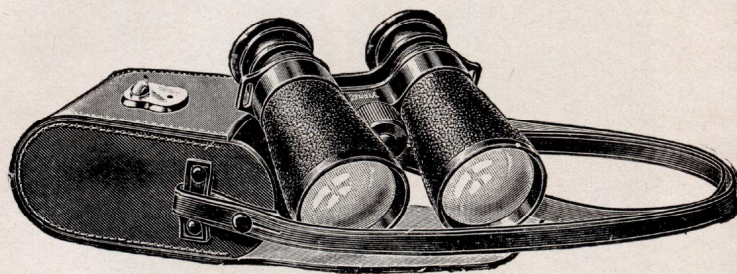


865

**865** Low shape, brass bodies covered with black morocco leather, black japanned mounting, large oculars. Loops and neck strap. In fine sole leather case with shoulder strap.

OBJECTIVE SIZE	HEIGHT CLOSED	HEIGHT EXTENDED
24 Lignes	3 1/4"	3 3/4"

**865A** Same but aluminum. Size and specifications as above.



880

**880** "BUSCH SELSI" Field Glass. Bodies of aluminum alloy covered with black vulcanite; black japanned mounting, two cross bars. Loops and neck strap. For hunting, racing, touring, camping, sport and marine use.

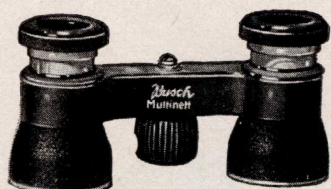
**SPECIFICATIONS**

Power, 4X; Diameter of object lenses, 40mm; Field of view at 1000 yds., 110 yds.; Height, 4 1/8"; Weight, 16 oz. In fine black leather "Sport Case" with neck strap.

SELSI COMPANY, Inc.

43 West 23rd Street

NEW YORK

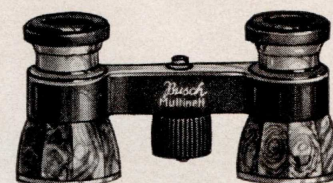


Leather Covered

# Busch

## MULTINETTS

SUPERIOR QUALITY  
IN SOFT LEATHER ZIPPER POUCHES



Pearl

### SPECIFICATIONS

Power, 2½X; Objective size, 24.5mm; Field of view at 100 yds., 28 yds.; Size, 3½" x 1½" x 1".

Weight of Leather Covered Glasses 3¾ oz.

- 6160 Black morocco leather covered bodies, black japanned mountings.
- 6160C Same but with jointed bars.
- \*6161 Black morocco leather covered bodies, black japanned heads, bar and thumb wheel. Gilt tubes, rings, screw and washer.
- \*6162 Same but brown leather and brown japanning.
- 6162K Same but brown crocodile leather.
- \*6163 Like 6161 but green leather and green japanning.
- \*6164 Same but blue leather and blue japanning.
- \*6166 Same but red leather and red japanning.
- \*6176 Gray snakeskin covered bodies, taupe japanned heads, bar and thumb wheel; nicked tubes, rings, top plate, screw and washer.

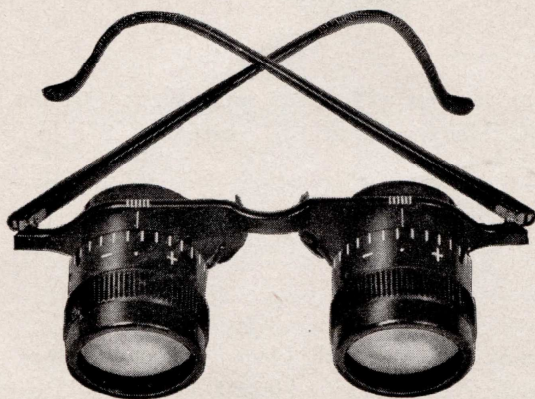
Weight of Pearl Glasses 4½ oz.

- \*6177 Smoke pearl covered bodies, black japanned heads, bar and thumb wheel; nicked tubes, rings, top plate, screw and washer.
- \*6177W Same but bodies covered with white pearl.
- \*6178 Same but bodies covered with alternate strips of white and smoke pearl.
- \*6179 Green iridescent (Persian) pearl covered bodies, green japanned heads, bar and thumb wheel; nicked tubes, rings, top plate, screw and washer.
- \*6180 Same but Burgau pearl; red japanning.
- 6181 White pearl covered bodies, heads and thumb wheel; all nicked mountings.
- 6182 Same but oriental pearl.
- 6183 Same but smoke pearl.

\* May be had with handles.

If wanted with handle add the letter H after the stock number.

6159 BUSCH "SONETT" Sport Glass. Bodies covered with black morocco leather, black japanned mountings. Power, 3X; Size, 3¼" x 2½" x 1⅜"; Weight, 5¼ oz. Objective size, 29mm; Field of view at 1000 yds., 165 yds. In soft leather zipper pouch.



6136



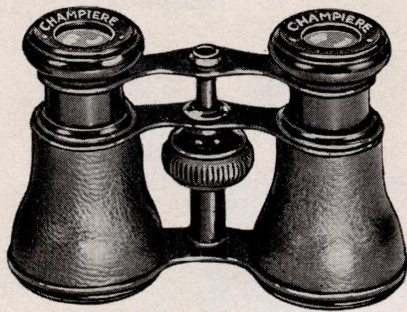
6136 BUSCH "OLYMPIA" worn like ordinary spectacles. Frame of aluminum alloy, light and durable. Heads and bodies of black vulcanite. Rocking guards, 6½" metal core, pliable cable temples. Individual focussing and adjustable to pupillary distance by simply sliding the barrels toward each other or apart. Focussing scale on each barrel, pupillary distance scale on top of cross bar. In soft leather pouch which with glass slips easily into the pocket.

### SPECIFICATIONS

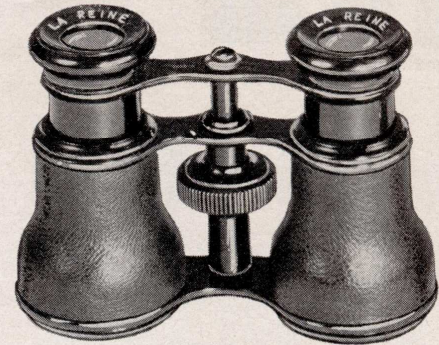
Power, 2¼X; Objective size, 28mm; Field of view at 1000 yds., 340 yds.; Light transmitting power, 160; Weight, 3.2 oz.

## Opera Glasses

IN LEATHER CASES



431



26367

**431** "CHAMPIERE" good quality, achromatic lenses, bodies covered with black morocco leather, black japanned mountings. Objective sizes 12, 14, 15 Lignes.

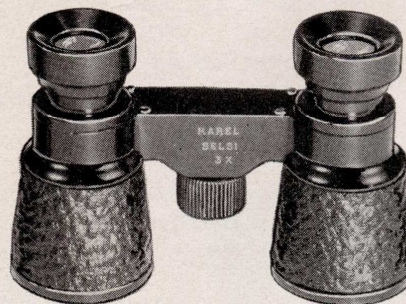
**26367** "LA REINE" similar in style to 431 but fine quality. Objective size 15 Lignes.



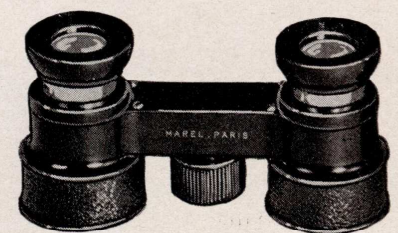
## Pocket Sport Glasses



26371



26374



26393

**26371** "MAREL" fine quality achromatic lenses. Cylindrical bodies covered with rough grain black vulcanite, black japanned mountings. Objective size 11 Lignes. Power  $2\frac{1}{2}X$ . Height closed  $1\frac{5}{8}$ ", extended 2". In fine tan flexible leather zipper pouch.

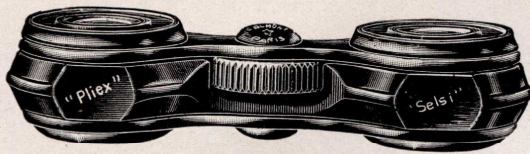
**26374** "MAREL" similar to above but conical bodies. Objective size 13 Lignes. Power  $3X$ . Height closed  $2\frac{3}{8}$ ", extended  $2\frac{5}{8}$ ".

**26393** "MAREL" good quality achromatic lenses. Cylindrical bodies covered with black morocco leather, black japanned mountings, nicked tubes. Objective size 11 Lignes. Power  $2\frac{1}{2}X$ . Height closed  $1\frac{5}{8}$ ", extended  $1\frac{7}{8}$ ". In flexible black morocco zipper pouch.

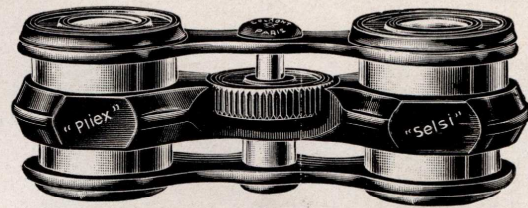
## COLMONT

PARIS

## Selsi-Pliex



Closed



Open

**26176** Bright black enameled bodies and mountings, nickeled tubes, "double draw." Not only the oculars but also the objectives are drawn out in focussing by means of a central wheel, making this new and compact model possible. Only  $\frac{7}{8}$ " high. Width 4", thickness  $1\frac{3}{8}$ ". Objective size 20mm. Power  $2\frac{1}{2}X$ . In compact morocco case.

**26232** Same but orchid enameled, gilt tubes, pearl focussing wheel. Orchid leather case to match.

**26233** Same but green.

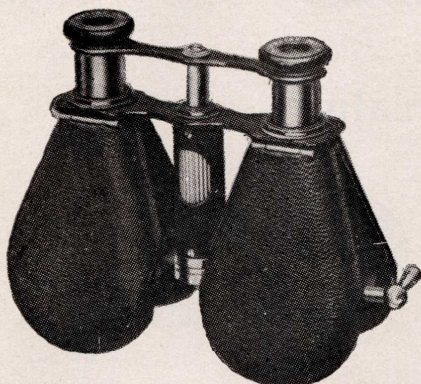
**26234** Same but gray.

**26235** Same but maroon.

**26236** Same but blue.

**26237** Same but rose.

## Folding Pocket Glasses



309



618

**309** "LEMAIRE" flat bodies covered with black morocco leather; black japanned mountings, nickeled tubes. In suede pouch.

Objective size 11 Lignes, dimensions (closed)  $4\frac{1}{4}$ " x  $2\frac{7}{8}$ " x  $\frac{3}{4}$ ".

Objective size 15 Lignes, dimensions (closed)  $4\frac{3}{4}$ " x  $3\frac{3}{4}$ " x  $\frac{3}{4}$ ".

**618** Flat body covered with black morocco leather, black japanned mountings. Fine quality.

Objective size 12 Lignes, dimensions (closed)  $4\frac{1}{4}$ " x  $2\frac{1}{4}$ " x  $\frac{5}{8}$ ".

Objective size 14 Lignes, dimensions (closed)  $4\frac{1}{2}$ " x  $3\frac{1}{2}$ " x  $\frac{5}{8}$ ".

**15840** "VESTA" Similar to 618. Good Quality.

Objective size 14 Lignes, dimensions (closed)  $4\frac{1}{2}$ " x 3" x  $\frac{5}{8}$ ".





## COLMONT

PARIS

THESE MARKS IDENTIFY THE GENUINE GLASSES

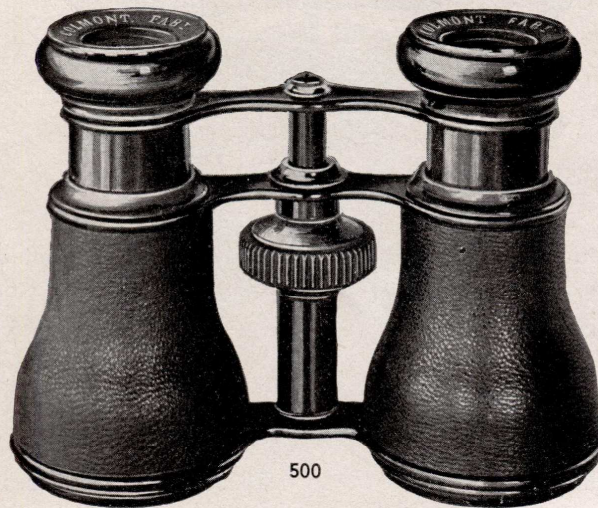
### Opera Glasses—Leather

IN LEATHER CASES

TRADE MARK

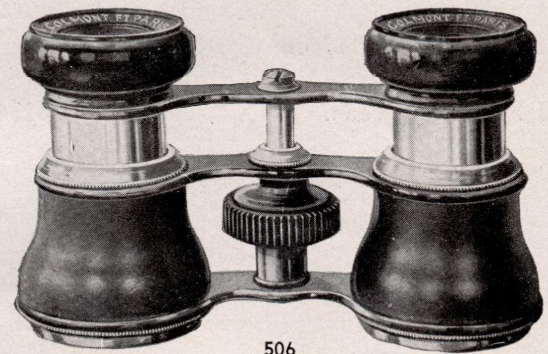


On Under Side  
of Middle Bar



#### HIGH SHAPE

- 500** Bodies covered with black morocco leather, black japanned mountings. Objective sizes 12, 14, 15, 17 Lignes.
- 500C** Same but with jointed bars. Objective sizes 14, 15 Lignes.
- 570** Bodies covered with black morocco leather, black japanned aluminum mountings, polished tubes. Objective sizes 12, 14, 15 Lignes.

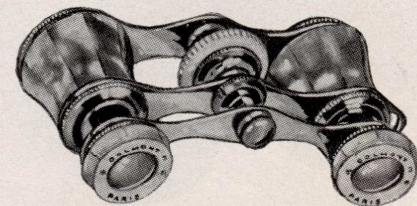
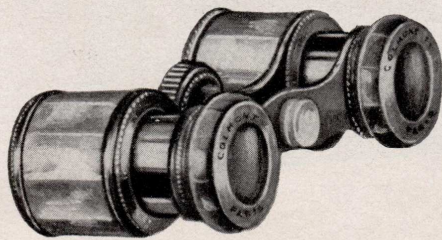


#### LOW SHAPE

- 506** Bodies covered with black morocco leather, black japanned mountings. Objective sizes 14, 15 Lignes.

### Opera Glasses—Miniature

POCKETBOOK CASES



- 526** Cylindrical bodies, white pearl. Gilt mountings. Objective size 8 Lignes.
- 528** Same but oriental pearl. Objective size 8 Lignes.
- 529** Same but smoke pearl. Objective size 8 Lignes.
- 513** Cylindrical bodies, covered with black morocco leather. Black japanned mountings. Objective size 8 Lignes.
- 514** Cylindrical bodies, covered with assorted colored leathers, cases to match. Gilt mountings. Pearl heads. Objective size 8 Lignes.

- 530/8** White pearl, gilt mountings. With loop and silk ribbon. Objective size 8 Lignes.
- 532/8** Same but oriental pearl. Objective size 8 Lignes.
- 534/8** Same but smoke pearl. Objective size 8 Lignes.
- 600** Bodies covered with black morocco leather. Black japanned mountings. With loop and silk ribbon. Objective size 8 Lignes.
- 767** Same but polished aluminum mountings. Objective size 8 Lignes.



## COLMONT

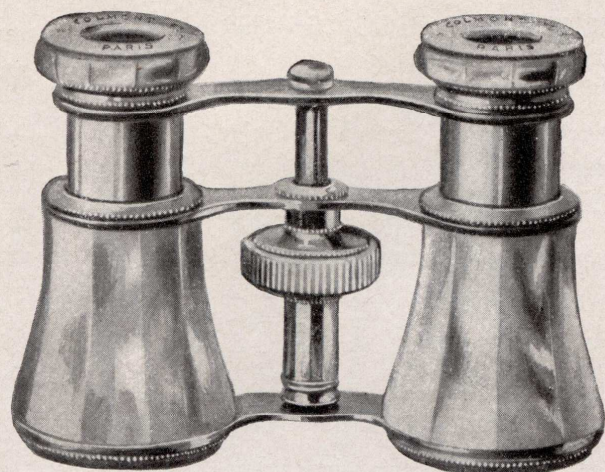
PARIS

THESE MARKS IDENTIFY THE GENUINE GLASSES

TRADE MARK

On Under Side  
of Middle Bar

### Opera Glasses—Pearl IN LEATHER CASES



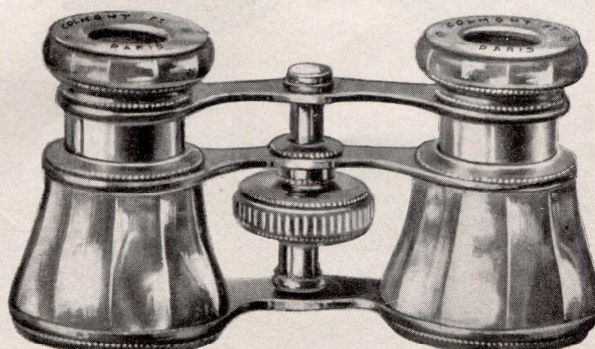
532

#### HIGH SHAPE

- 530 White pearl, gilt mountings. Pearl topped screw. Best quality. Objective sizes 12, 14, 15 Lignes.
- 532 Same but oriental pearl. Objective sizes 12, 14, 15 Lignes.
- 4530 White pearl, gilt mountings. Fine quality. Objective sizes 12, 14 Lignes.
- 4532 Same but oriental pearl. Objective sizes 12, 14 Lignes.
- 4540 White pearl, gilt mountings. Good quality. Objective sizes 12, 14 Lignes.
- 4542 Same but oriental pearl. Objective sizes 12, 14 Lignes.

#### LOW SHAPE

- 560 White pearl, gilt mountings. Pearl topped screw. Best quality. Objective size 14 Lignes.
- 562 Same but oriental pearl. Objective size 14 Lignes.

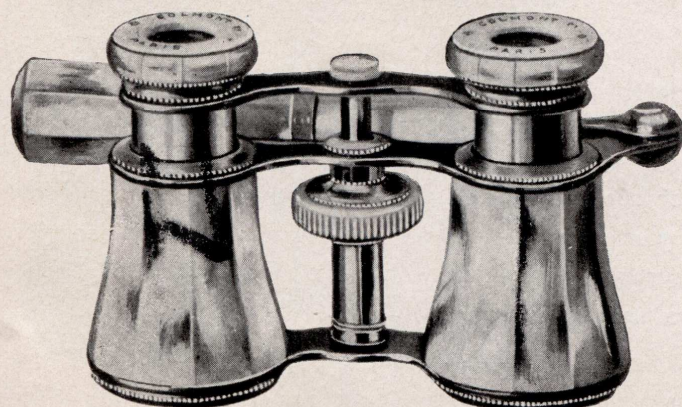


562



### Opera Glasses with Handles Attached

WITH PEARL-TOPPED SCREW—IN PLUSH BAGS



4632

- 4630 High shape, white pearl, gilt mountings. Best quality. Objective sizes 12, 14 Lignes.
- 4632 Same but oriental pearl. Objective sizes 12, 14 Lignes.
- 4660 Low shape, white pearl, gilt mountings. Best quality. Objective size 14 Lignes.
- 4662 Same but oriental pearl. Objective size 14 Lignes.
- 4680 Low shape, white pearl, polished aluminum mountings. Best quality. Objective size 14 Lignes.
- 4682 Same but oriental pearl. Objective size 14 Lignes.



**LEMAIRE**  
PARIS

ALL GENUINE GLASSES BEAR THESE MARKS

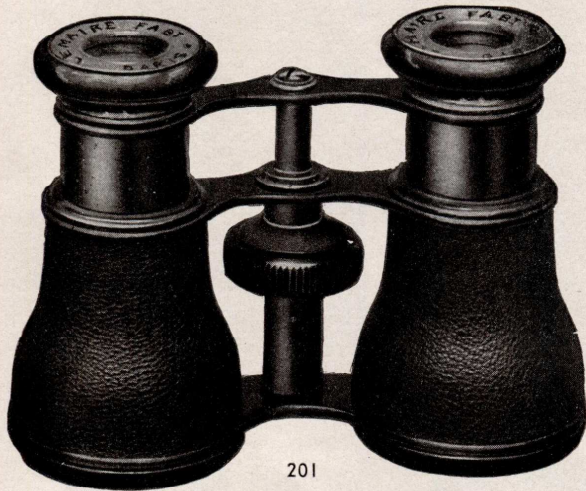
**Opera Glasses**  
IN LEATHER CASES

TRADE MARK



On Under Side  
of Middle Bar

HIGH SHAPE, BODIES COVERED WITH BLACK MOROCCO LEATHER

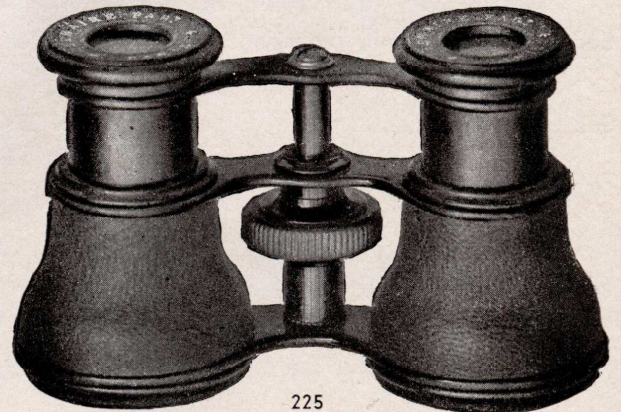


201

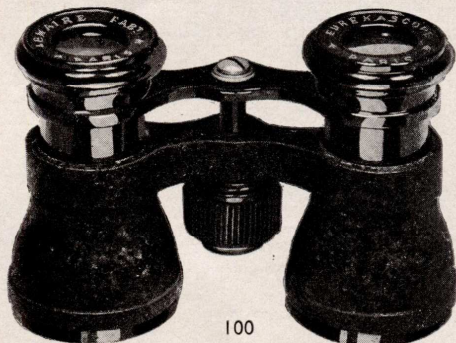
- 201 Brass, black japanned mountings. Objective sizes 11, 13, 15, 17, 19 Lignes.
- 222 Same as 201 but 12 lenses. Same objective sizes.
- 310 Aluminum, black japanned mountings. Same objective sizes.
- 315 Same as 310 but 12 lenses. Same objective sizes.
- 311 Aluminum, polished tubes and rings. Black japanned mountings. Same objective sizes.
- 313 Same as 311 but 12 lenses. Same objective sizes.
- 312 Aluminum, all polished mountings. Same objective sizes.
- 314 Same as 312 but 12 lenses. Same objective sizes.

LOW SHAPE, BODIES COVERED WITH BLACK MOROCCO LEATHER

- 225 Brass, black japanned mountings. Objective sizes 11, 13, 15, 17, 19 Lignes.
- 310M Aluminum, black japanned mountings. Same objective sizes.
- 315M Same as 310M but 12 lenses. Same objective sizes.
- 311M Aluminum, polished tubes and rings. Black japanned mountings. Same objective sizes.
- 313M Same as 311M but 12 lenses. Same objective sizes.
- 312M Aluminum, all polished mountings. Same objective sizes.
- 314M Same as 312M but 12 lenses. Same objective sizes.



225



100

**The Lemaire Pocket Eureka scope**

- 100 Body and center bar, dull frosted finish; other parts japanned. Body and bars are of aluminum alloy—lower bar being cast in one piece with body. In soft suede pouch which, with glass, slips easily into pocket. Ideal for general use. Objective size 15 Lignes.

For extras such as "12 Lenses" & "Jointed Bars" see page 59.



# LEMAIRE

PARIS

ALL GENUINE GLASSES BEAR THESE MARKS

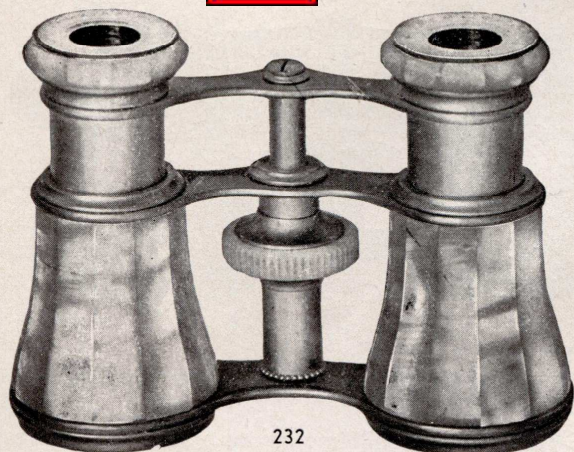
TRADE MARK



On Under Side  
of Middle Bar

## Opera Glasses—Pearl

IN LEATHER CASES



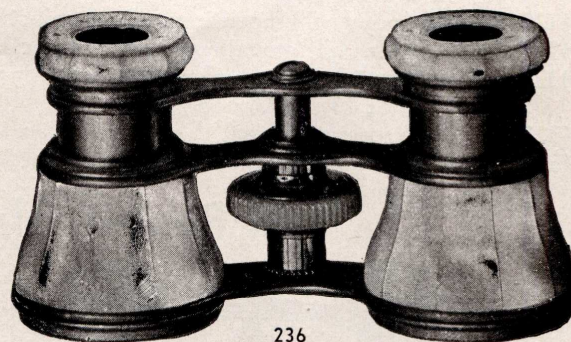
232

HIGH SHAPE

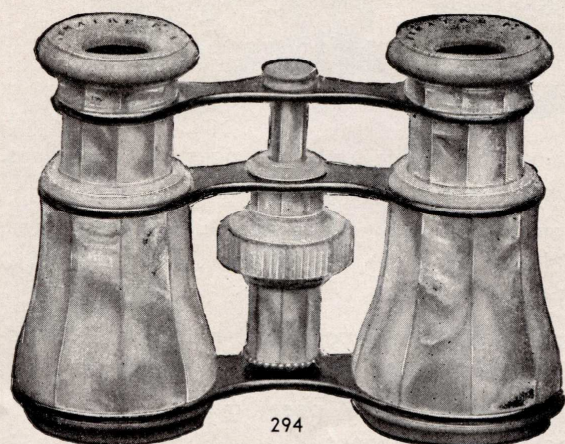
- 230 White pearl, gilt mountings. Objective sizes 11, 13, 15 Lignes.
- 232 Oriental pearl, gilt mountings. Same objective sizes.
- 234 Smoke pearl, gilt mountings. Same objective sizes.
- 240 Smoke pearl, black japanned mountings and heads. Same objective sizes.
- 231 White pearl, pearl tubes, gilt mountings. Same objective sizes.
- 233 Same but oriental pearl. Same objective sizes.
- 320 White pearl, polished aluminum mountings. Same objective sizes.
- 322 Same but oriental pearl. Same objective sizes.
- 324 Same but smoke pearl. Same objective sizes.

LOW SHAPE

- 236 White pearl, gilt mountings. Objective sizes 11, 13, 15 Lignes.
- 238 Oriental pearl, gilt mountings. Same objective sizes.
- 320M White pearl, polished aluminum mountings. Same objective sizes.
- 322M Same but oriental pearl. Same objective sizes.
- 324M Same but smoke pearl. Same objective sizes.



236



294

- 294 High shape, all white pearl, nickeled bars. Objective size 13 Lignes.
- 294G High shape, all Oriental pearl, gilt bars. Objective size 13 Lignes.
- 296 High shape, all White pearl, including bars. Objective size 13 Lignes.
- 297 Same but low shape. Objective size 13 Lignes.

For extras such as "12 Lenses" & "Jointed Bars" see page 59.



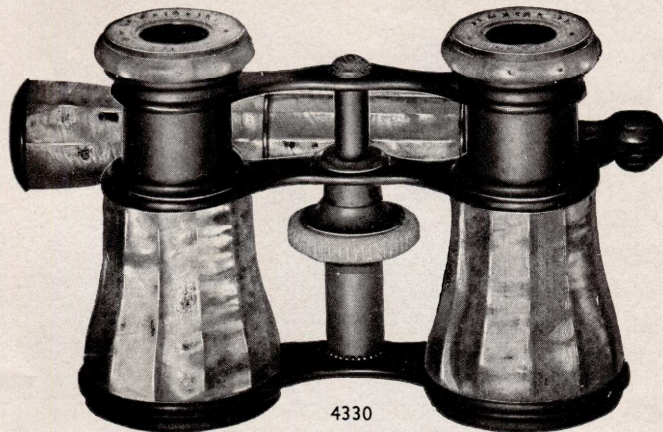
**LEMAIRE**  
PARIS

ALL GENUINE GLASSES BEAR THESE MARKS



## Opera Glasses—Pearl with Handles Attached

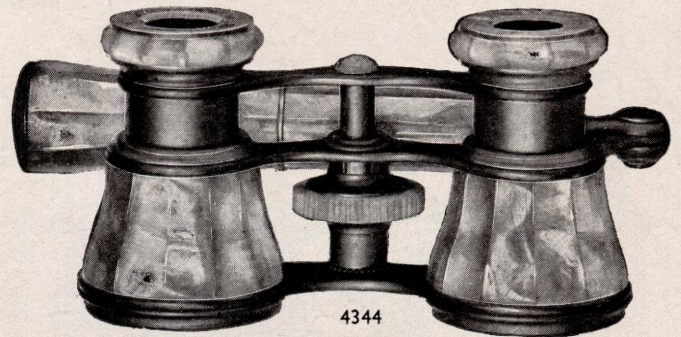
IN PLUSH BAGS



4330

HIGH SHAPE

- 4330** White pearl, gilt mountings. Objective sizes 11, 13, 15 Lignes.  
**4332** Oriental pearl, gilt mountings. Same objective sizes.  
**4334** Smoke pearl, gilt mountings. Same objective sizes.  
**4320** White pearl, polished aluminum mountings. Objective sizes 13, 15 Lignes.  
**4322** Same but oriental pearl. Same objective sizes.  
**4324** Same but smoke pearl. Same objective sizes.

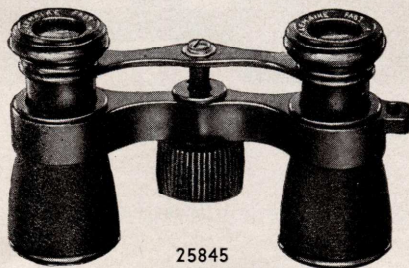


4344

LOW SHAPE

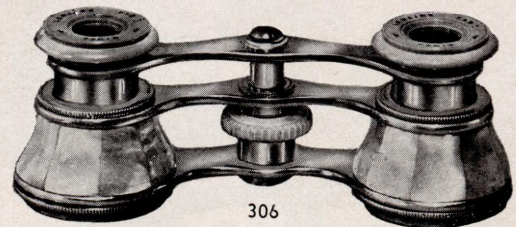
- 4343** White pearl, gilt mountings. Objective sizes 13, 15 Lignes.  
**4344** Oriental pearl, gilt mountings. Same objective sizes.  
**4344P** Same but with pearl tubes. Same objective sizes.  
**4320M** White pearl, polished aluminum mountings. Same objective sizes.  
**4322M** Same but oriental pearl. Same objective sizes.  
**4324M** Same but smoke pearl. Same objective sizes.

## Vest Pocket Glasses in Soft Leather Cases



25845

- 25845** High shape, two-bar construction; brass bodies covered with black morocco leather, black japanned mountings. Loop and silk cord. Objective size 10 Lignes.  
**25840** High shape, two-bar construction; white pearl, gilt mountings. Loop and silk cord. Objective size 10 Lignes.  
**25841** Same but oriental pearl. Objective size 10 Lignes.  
**301** Low shape, brass bodies covered with black morocco leather, black japanned mountings. Objective size 10 Lignes.



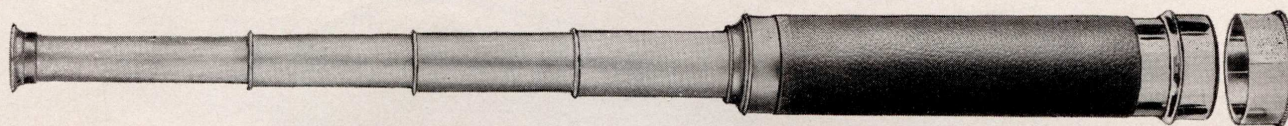
306

- 302** Same but aluminum, all polished mountings. Objective size 10 Lignes.  
**303** Low shape, bodies covered with tortoise shell, polished aluminum mountings. Objective size 10 Lignes.  
**305** Low shape, white pearl, gilt mountings. Objective size 10 Lignes.  
**306** Low shape, oriental pearl, gilt mountings. Objective size 10 Lignes.

For extras such as "12 Lenses" & "Jointed Bars" see page 60.



## Telescopes



7821

- 7821** Fine quality, achromatic. Brass body covered with black morocco leather stitched to the body. Lacquered brass mountings, polished brass draw tubes. Dust cap to protect objective, sliding cap to protect ocular. Power engraved on tube. In cloth covered case. For sizes and specifications see table below.
- 7822** Same, but with lacquered brass movable sunshade. For sizes and specifications see table below.
- 17248** Like 7821 but mountings and tubes black oxidized. For sizes and specifications see table below.
- 17249** Same but with black oxidized movable sunshade. For sizes and specifications see table below.
- 20522** Good quality, achromatic. Style 7821. Brass body covered with black morocco leather, pasted to the body. Lacquered brass mountings, polished brass draw tubes. Dust cap to protect objective, sliding cap to protect ocular. Power engraved on tube. In cardboard case. Objective sizes 10, 12, 14, 16 Lignes. Specifications as below.

### SPECIFICATIONS

SIZE LIGNES	POWER	NUMBER OF TUBES	LENGTH CLOSED	LENGTH EXTENDED
10	10X	3	5"	13½"
12	12X	3	6"	16½"
14	15X	3	6½"	17¼"
16	20X	3	8½"	23½"
19	25X	3	10½"	30"
22	30X	4	11"	36"
25	35X	4	13"	44"



MEGAPHOS  
MAXIM

**26224**  
**26359**

## Prism Monoculars

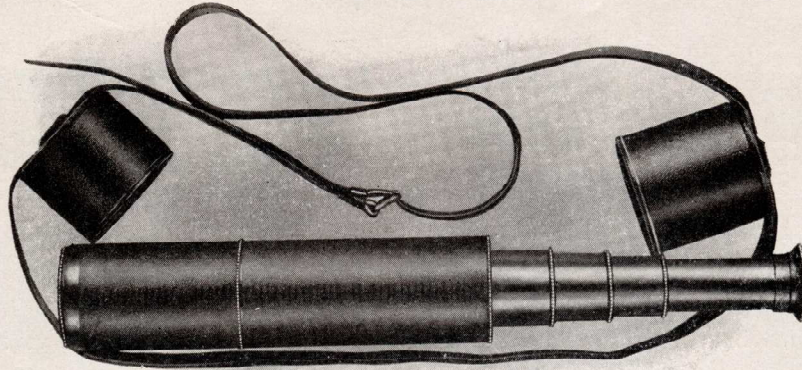
IN LEATHER POUCHES

### SPECIFICATIONS

POWER	OBJECTIVE SIZE	OCULAR SIZE	FIELD AT 1000 YDS.	HEIGHT	WEIGHT OF GLASS
6X	21mm	10mm	130 Yds.	2¾"	4½ oz.
8X	25mm	11mm	110 Yds.	4"	8 oz.

## Selsi—E. Vion Rifle Range Telescope

FINE QUALITY



5880

One of the handiest and most popular telescopes, extremely powerful in spite of its compact size, of elegant construction throughout and reasonably priced. Brass body covered with black morocco leather; four black matt japanned tubes. Equipped with movable leather covered sunshade, and sliding eyepiece disk to protect eye-lens. When not in use, leather caps cover eyepiece and object lens which in conjunction with the leather covered body form a compact case for the telescope which may be slung over the shoulder by means of a carrying strap.

### SPECIFICATIONS

- 5880** Objective size, 2"; Length (closed), 10 $\frac{1}{4}$ "; Length (extended), 35 $\frac{1}{2}$ "; Magnification of eyepiece (terrestrial), 33X.  
**5882** Extra astronomical eyepiece with sunglass for above telescope. Magnification 55X.

### OTHER SELSI VION RIFLE RANGE TELESCOPES

Similar to 5880

#### SPECIFICATIONS

NO.	OBJECTIVE SIZE	MAGNIFICATION	LENGTH CLOSED	LENGTH EXTENDED	NUMBER OF TUBES
<b>5878</b>	1 $\frac{3}{4}$ "	25X	10"	29 $\frac{1}{2}$ "	3
<b>21921</b>	1 $\frac{3}{4}$ "	30X	10"	29"	3
<b>20474</b>	1 $\frac{3}{4}$ "	40X	8 $\frac{1}{4}$ "	21 $\frac{1}{8}$ "	3
<b>*21941</b>	1 $\frac{3}{4}$ "	20X, 25X & 30X	10 $\frac{1}{4}$ "	30"	3

\* With pancratic eyepiece giving variable powers.

## Ship's Telescopes



1226

**19902** Single draw. Conical brass body covered with black morocco leather stitched to the body, black japanned mountings. Movable sunshade. Dust cap to protect objective and sliding cap to protect ocular. Two leather bands with loops stitched to the body. Power, 20X; Objective size, 2"; Length closed, 27"; Length extended, 41".

1226

Single draw. Cylindrical brass body covered with rough grain leather stitched to the body, lacquered brass mountings, polished brass draw tube. Movable sunshade. Sliding caps to protect both ocular and objective. Two leather bands with loops stitched to the body. Power, 18X; Objective size, 1 $\frac{7}{8}$ "; Length closed, 24"; Length extended, 41".

## BUSCH—SELSI Rifle Range Telescopes

SUPERIOR QUALITY



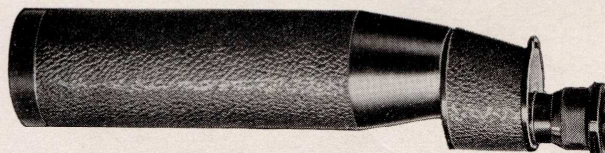
6250

This is a handsomely finished, compact model. The body is of brass, covered with black leather stitched to the body. It is provided with a movable leather covered sunshade, forming part of body when telescope is not in use. The mounting is black japanned; silver finish objective band. Furnished with metal cap and sliding eyepiece disk to protect object lens and ocular; likewise eye-cup to protect eye against sun-glare and side-lights. Black japanned draw tubes. In black case.

### SPECIFICATIONS

NO.	OBJECTIVE SIZE	MAGNIFICATION	LENGTH CLOSED	LENGTH EXTENDED	NUMBER OF TUBES
6248	2"	28X	10"	31 3/4"	4
6249	2 1/8"	35X	11 1/4"	35 1/2"	4
6250	2 3/4"	44X	11 1/2"	42"	5

## Busch Lightweight Prismatic Telescope



6240

6240 Body of special lightweight metal covered with rough grain black vulcanite. Black satin finish japanned mountings. Focussing by means of turning eyepiece which is engraved with focussing scale. Provided with loop and neck strap. Light and compact.

### SPECIFICATIONS

Power, 20X; Effective objective diameter, 46mm; Field of view at 1000 Yds., 43 Yds.; Length, 10 1/2"; Weight, 13 oz.

## Busch Ship's Telescope



6256

6256 Single draw. Conical brass body covered with rough grain leather stitched to the body. Black satin finish lacquered mountings. Movable sunshade. Dust cap to protect objective and sliding cap to protect ocular. Two leather bands with loops sewed to the body. Superior quality.

### SPECIFICATIONS

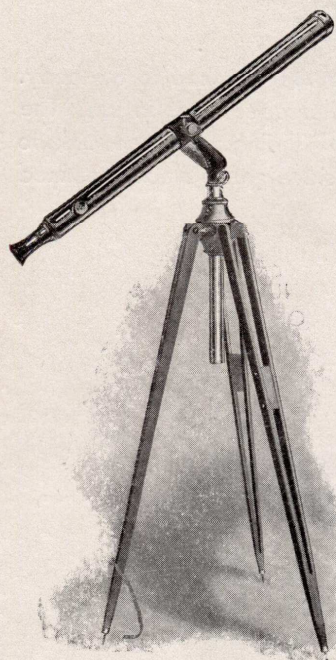
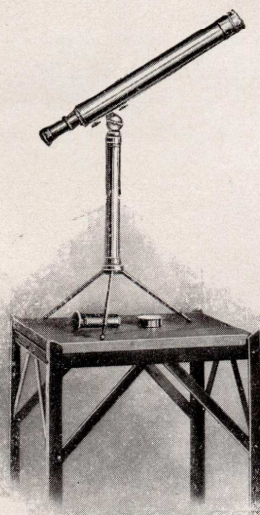
Power, 26X; Effective objective diameter, 60mm; Field of view at 1000 Yds., 27 Yds.; Length closed, 24"; Length extended, 30".



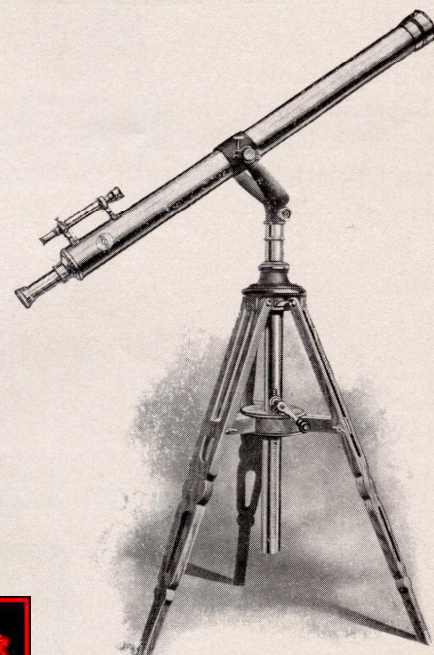
## SELSI—E. VION

### Astronomical Telescopes

FINE QUALITY

5800F  
5802

5864 to 5869



5842



The skies which puzzle the naked eye with myriad stars assume increasingly familiar aspects when revealed by a telescope of the SELSI-E. VION type. The celebrated instruments of SELSI-E. VION of Paris have for many years afforded satisfaction to users in the French Ministries of "War," "Marine," "Public Instruction," and the famous and critical "Faculty of Sciences."

The unexcelled workmanship, the high optical qualifications and the reasonable prices of these telescopes have established their reputation.

When enjoyment and instruction march hand in hand, one cannot wonder that Country Houses and Resort Hotels are nowadays equipped with SELSI-E. VION Telescopes for the convenience of their guests and patrons. Their use in schools and institutions is daily becoming more popular.

The terrestrial oculars suit SELSI-E. VION Telescopes for daytime observation and render them suitable instruments for defining distant objects, particularly from the seaside, one's veranda, etc., clearly, sharply and distinctly.

For descriptions and specifications see opposite page.

## SELSI—E. VION

### Astronomical Telescopes

FINE QUALITY

DESCRIPTIONS

Telescope packed complete with mount and eyepieces in strong wood box with handle, tripod separate.

- 5800F/3"** Lacquered brass body and trim, black frosted fork mount, rack and pinion focussing, wooden rod; substantial oak tripod with black japanned fittings.
- 5801F/3"** Same but white lacquered brass body, black japanned trim, polished brass ocular tube.
- 5802/2 1/4"** White lacquered brass body, black japanned tube, rings and focussing screw, black frosted fork mount, rack and pinion focussing, brass rod; substantial mahogany tripod with brass fittings.
- 5810/3"** Similar to 5800F but longer body with objective cap, brass rod and larger tripod.
- 5842/3 1/2"** Like 5810 but larger and with finder. Heavy oak mechanical tripod with crank for elevating or lowering the instrument.
- 5864/1 5/8"** Lacquered brass body and trim; with objective cap, draw focussing. Lacquered brass table tripod from which the legs may be detached and fitted into the column for convenience in carrying. Telescope packed complete with eyepieces and tripod in nice wood box with handle.
- 5866** Same but 2" objective.
- 5868** Same but 2 1/4" objective.
- 5865/1 5/8"** Like 5864 but white lacquered body and column, black japanned trim. Polished brass ocular tube.
- 5867** Same but 2" objective.
- 5869** Same but 2 1/4" objective.

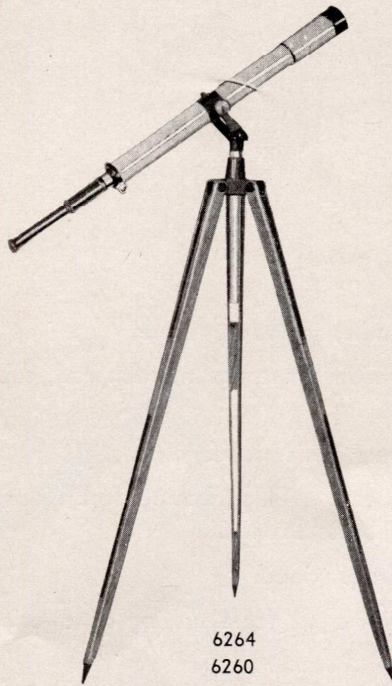


#### SPECIFICATIONS

NO.	DIAMETER OF OBJECT LENS	LENGTH CLOSED	LENGTH EXTENDED	MAGNIFICATION OF EYEPIECES	
				ASTRONOMICAL, EACH WITH SUN GLASS	TERRESTIAL
<b>5800F</b>	3"	39"	58 1/4"	70X 120X	45X
<b>5801F</b>	3"	39"	58 1/4"	70X 120X	45X
<b>5802</b>	2 1/4"	32 1/2"	48"	80X	45X
<b>5810</b>	3"	43"	62 1/4"	70X 155X	50X
<b>5842</b>	3 1/2"	51 1/2"	70"	80X 120X 185X	60X 75X
<b>5864</b>	1 5/8"	15 7/8"	29 1/4"	50X	25X
<b>5866</b>	2"	24 5/8"	34"	60X	35X
<b>5868</b>	2 1/4"	30"	42"	80X	45X
<b>5865</b>	1 5/8"	15 7/8"	29 1/4"	50X	25X
<b>5867</b>	2"	24 5/8"	34"	60X	35X
<b>5869</b>	2 1/4"	30"	42"	80X	45X

#### ACCESSORIES

Prices of eyepieces, diagonal eyepieces, etc., upon application.



# Busch

## Astronomical Telescopes

SUPERIOR QUALITY

BUSCH Telescopes are ideally adapted for the purpose of astronomical observation. Among the high grade telescopes now on the market no instruments deserve more popularity. Generations of experience in the construction of scientifically made optical instruments have entered into their manufacture. Guarding against the least possible imperfection in construction, each part and accessory is thoroughly tested before leaving the factory.

- 6260/3"** White lacquered brass body with objective cap, black japanned trim, nicked focussing screw and rod, black frosted fork mount. Rack and pinion focussing. Substantial oak tripod with black japanned fittings. Telescope packed complete with mount and eyepieces, in strong wood box with handle, tripod separate.
- 6264** Same but 2 $\frac{3}{4}$ " objective.

### SPECIFICATIONS

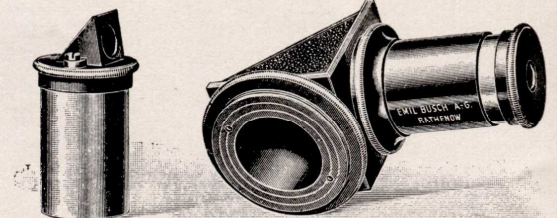
NO.	DIAMETER OF OBJECTIVE LENS	LENGTH CLOSED	LENGTH EXTENDED	MAGNIFICATION OF EYEPIECES		
				ASTRONOMICAL WITH ONE SUNGLASS		TERRESTRIAL
6260	3"	42 $\frac{1}{2}$ "	47 $\frac{1}{2}$ "	53X	106X	35X
6264	2 $\frac{3}{4}$ "	36"	41"	88X		44X

## Extra Eyepieces for Busch Telescopes

- 6270** TERRESTRIAL, Focal Lengths: 18mm, 22mm, 27mm.
- 6271** ASTRONOMICAL, "HUYGENIAN" type, consisting of one plano convex eye lens and one meniscus field collective lens. The image is formed between the lenses. Virtual field of view about 50°. Focal lengths: 7mm, 9mm, 12.5mm, 18mm.
- 6272** ASTRONOMICAL "ORTHOSCOPIC" type, consisting of a single eye lens and a combination of three cemented lenses. On account of the great distance of the point of vision from the eye lens this type is recommended for high magnifications. Virtual field of view about 40°. Fine flat field. Focal lengths: 6mm, 7mm, 9mm, 12.5mm.

### ACCESSORIES

- 6274** Ocular Prism. This prism is screwed onto the astronomical eyepiece after removing the ocular top and permits zenith observations without the necessity of one's having to strain one's head. It fits any of the astronomical oculars. In case.
- 6275** Zenith Prism with jacket to receive any astronomical eyepieces of all BUSCH Astronomical Telescopes. In case.



6274

6275

# ATTENTION

The prices in this catalog are suggested retail prices. We will be pleased to supply **WHOLESALE PRICES** on request.

## NOTE

● ■ We are exclusively  
WHOLESALE and do NOT WAIT ON  
OR SELL to people not in the trade.

**SELSI COMPANY, INC.**

Importers

43 WEST 23rd STREET

NEW YORK

**MB**

# Resale Price List

PAGE 2 PRISM BINOCULARS, ETC.			PAGE 9 ACHROMATIC FIELD GLASSES			PAGE 11 (Continued)		
		Each			Each			Each
26265/6X	Hyphos	\$20.00	5120/24	Colmont	\$21.50	On 21 Ligne Lemaire Glasses		\$9.00
26265/8X	"	20.00	5120/26	"	23.00	" 24 " " "		10.25
26264/6X	"	26.50	26273/19	"	12.50	" 26 " " "		11.75
26264/8X	"	26.50	5130/24	"	21.50	ADDITIONAL FOR "JOINTED BARS"		
26246/10X	Stereophos	33.00	5130/26	"	23.00	On Brass Glasses		6.50
26297/12X	"	40.00	26380	Colmont 4 x 40	16.50	On Aluminum Glasses		9.50
PAGE 3 PRISM BINOCULARS			26277	Colmont	10.75	PAGE 12 ACHROMATIC FIELD GLASSES		
5600/6X	Colmont	\$36.50	26259	"	16.75	888/24	Busch	\$33.50
5602/8X	"	36.50	26262	"	19.25	888/26	"	38.75
5610/6X	"	46.00	26263	"	20.50	865/24	"	32.50
5612/8X	"	46.00	PAGE 10 ACHROMATIC FIELD GLASSES			865A/24	"	37.50
5617/6X	"	40.50	1050/21	Lemaire	\$33.50	882C	"	26.00
5618/8X	"	40.50	1050/24	"	37.75	880	"	24.00
5648/6X	Prismiris	26.00	1050/26	"	40.25	PAGE 13 ACHROMATIC SPORT & OPERA GLASSES		
PAGE 4 PRISM BINOCULARS			1052/21	"	40.25	6160	Multinett	\$19.00
26404/8X	Colmont Lightweight	\$35.00	1052/24	"	44.50	6160C	"	22.00
26397/8X	"	41.00	1052/26	"	46.75	*6161	"	20.00
PAGE 5 PRISM BINOCULARS			7967/21	"	33.50	*6162	"	21.25
6040/6X	Busch	\$63.00	7967/24	"	37.75	6162K	"	23.75
6042/8X	"	63.00	7967/26	"	40.25	*6163	"	21.25
6046/6X	"	81.00	1055/26	"	58.75	*6164	"	21.25
6048/8X	"	90.00	8949/21	"	33.50	*6166	"	21.25
6120/6X	"	150.00	8949/24	"	37.75	*6166	"	21.25
6124/7X	"	165.00	8949/26	"	40.25	*6176	"	22.00
6128/10X	"	225.00	1062/21	"	51.75	*6177	"	24.50
PAGE 6 IMITATION BINOCULARS			1062/24	"	57.00	*6177W	"	24.50
26262	Pristiris	\$15.00	1062/26	"	61.75	*6178	"	24.50
26406	Champiere	7.50	"EXTRAS" FOR ABOVE			*6179	"	24.50
26407	"	8.50	ADDITIONAL FOR "12 LENSES"			*6180	"	24.50
PAGE 7 NON-ACHROMATIC FIELD GLASSES			On 21 Ligne Lemaire Glasses		\$9.00	6181	"	28.50
26398	Sportiere	\$4.25	" 24 " " "		10.25	6182	"	28.50
26399	"	4.25	" 26 " " "		11.75	6183	"	28.50
26251	Beauchamp	5.75	ADDITIONAL FOR "JOINTED BARS"			* May be had with handles.		
26324	"	6.50	On Brass Glasses		6.50	If wanted with handle add the letter H.		
19241A	Sportiere	5.00	On Aluminum Glasses		9.50	EXTRA FOR HANDLE		
26333	"	5.00	PAGE 11 ACHROMATIC FIELD GLASSES			Nos. 6161 to 6176		8.00
26316	"	5.00	201SL/19	Lemaire	\$21.00	Nos. 6177 to 6180		11.50
PAGE 8 ACHROMATIC FIELD GLASSES			201SL/21	"	27.75	6159	Sonett	20.00
26405	Marchand	\$7.25	201SL/24	"	32.50	6136	Olympia	20.00
26401	Champiere	7.75	201SL/26	"	34.75	PAGE 14 ACHROMATIC OPERA & SPORT GLASSES		
26402	"	8.00	1054/15	"	22.75	431/12	Champiere	\$5.00
26370	Marchand	11.00	1054/17	"	24.75	431/14	"	5.75
26171	Iris	10.75	1054/19	"	27.25	431/15	"	6.50
26292	"	10.75	1054/21	"	29.75	26367/15	La Reine	10.00
26205	"	10.75	318/24	"	48.00	26371	Marel	10.50
PAGE 9 (Continued)			318M/24	"	51.75	26374	"	13.50
PAGE 10 (Continued)			318B/24	"	41.00	26393	"	5.75
PAGE 11 (Continued)			318BM/24	"	44.75	PAGE 15 ACHROMATIC MINIATURE & FOLDING GLASSES		
PAGE 12 (Continued)			"EXTRAS" FOR ABOVE			26176	Colmont Pliex	\$18.50
PAGE 13 (Continued)			ADDITIONAL FOR "12 LENSES"			26232 to 26237	"	20.00
PAGE 14 (Continued)			On 15 Ligne Lemaire Glasses		\$7.00			
PAGE 15 (Continued)			" 17 " " "		7.50			
PAGE 16 (Continued)			" 19 " " "		8.25			



RESALE PRICE LIST — Continued

PAGE 15 (Continued)			PAGE 18 (Continued)			PAGE 18 (Continued)		
		Each			Each			Each
309/11	Lemaire Folding	\$24.00	315/11	Lemaire	\$29.00	314/M19	Lemaire	\$46.00
309/15	" "	27.00	315/13	"	30.25	100/15	"	13.25
618/12	Folding	12.50	315/15	"	32.75	"EXTRAS" FOR ABOVE		
618/14	"	13.25	315/17	"	35.50	ADDITIONAL FOR "12 LENSES"		
15840/14	Vesta Folding	10.00	315/19	"	39.50	On 11, 13, or 15 Ligne Glasses		7.00
PAGE 16 ACHROMATIC OPERA GLASSES			311/11	"	23.25	" 17	"	7.50
500/12	Colmont	\$10.00	311/13	"	24.50	" 19	"	8.25
500/14	"	10.50	311/15	"	27.00	ADDITIONAL FOR "JOINTED BARS"		
500/15	"	11.50	311/17	"	29.25	On Brass Glasses		6.50
500/17	"	12.50	311/19	"	32.50	On Aluminum Glasses		9.50
500C/14	"	16.00	313/11	"	30.25	PAGE 19 ACHROMATIC OPERA GLASSES		
500C/15	"	17.00	313/13	"	31.50	GLASSES		
570/12	"	13.00	313/15	"	34.00	230/232/234/11	Lemaire	\$27.25
570/14	"	13.75	313/17	"	36.75	230/232/234/13	"	29.50
570/15	"	14.75	313/19	"	40.75	230/232/234/15	"	31.50
506/14	"	12.00	312/11	"	26.00	240/11	"	23.00
506/15	"	13.00	312/13	"	27.25	240/13	"	25.00
526/528/529/8	Colmont Miniature	17.00	312/15	"	29.75	240/15	"	27.25
513/8	"	11.00	312/17	"	32.00	231/233/11	"	31.75
514/8	"	14.25	312/19	"	35.25	231/233/13	"	34.00
530/532/534/8	"	16.00	314/11	"	33.00	231/233/15	"	36.00
600/8	"	9.00	314/13	"	34.25	320/322/324/11	"	35.50
767/8	"	13.25	314/15	"	36.75	320/322/324/13	"	37.75
PAGE 17 ACHROMATIC OPERA GLASSES			314/17	"	39.50	320/322/324/15	"	39.75
530/532/12	Colmont	\$20.25	314/19	"	43.50	236/238/11	"	29.75
530/532/14	"	21.50	225/11	"	18.75	236/238/13	"	32.00
530/532/15	"	23.50	225/13	"	19.25	236/238/15	"	34.00
4530/4532/12	"	18.00	225/15	"	19.75	320M/322M/324M/11	"	38.00
4530/4532/14	"	20.00	225/17	"	22.00	320M/322M/324M/13	"	40.25
4540/4542/12	"	15.00	225/19	"	24.25	320M/322M/324M/15	"	42.25
4540/4542/14	"	16.50	310M/11	"	24.50	294/13	"	53.75
560/562/14	"	23.00	310M/13	"	25.75	294G/13	"	53.75
4630/4632/12	"	31.50	310M/15	"	28.25	296/13	"	75.00
4630/4632/14	"	33.00	310M/17	"	30.50	297/13	"	77.50
4660/4662/14	"	34.50	310M/19	"	33.75	"EXTRAS" FOR ABOVE		
4680/4682/14	"	40.00	315M/11	"	31.50	ADDITIONAL FOR "12 LENSES"		
PAGE 18 ACHROMATIC OPERA GLASSES			315M/13	"	32.75	On 11, 13, or 15 Ligne Glasses		7.00
201/11	Lemaire	\$16.50	315M/15	"	35.25	ADDITIONAL FOR JOINTED BARS		
201/13	"	17.00	315M/17	"	38.00	On Brass Glasses		6.50
201/15	"	17.50	315M/19	"	42.00	On Aluminum Glasses		9.50
201/17	"	19.75	311M/11	"	25.75	PAGE 20 ACHROMATIC OPERA GLASSES		
201/19	"	22.00	311M/13	"	27.00	GLASSES		
222/11	"	23.50	311M/15	"	29.50	4330/4332/4334/11	Lemaire	\$43.75
222/13	"	24.00	311M/17	"	31.75	4330/4332/4334/13	"	46.00
222/15	"	24.50	311M/19	"	35.00	4330/4332/4334/15	"	48.00
222/17	"	27.25	313M/11	"	32.75	4320/4322/4324/13	"	54.25
222/19	"	30.25	313M/13	"	34.00	4320/4322/4324/15	"	56.25
310/11	"	22.00	313M/15	"	36.50	4343/4344/13	"	48.50
310/13	"	23.25	313M/17	"	39.25	4343/4344/15	"	50.50
310/15	"	25.75	313M/19	"	43.25	4344P/13	"	53.00
310/17	"	28.00	312M/11	"	28.50	4344P/15	"	55.00
310/19	"	31.25	312M/13	"	29.75	4320M/4322M/4324M/13	"	56.75
			312M/15	"	32.25	4320M/4322M/4324M/15	"	58.75
			312M/17	"	34.50	25845/10	"	18.00
			312M/19	"	37.75	25840/25841/10	"	30.75
			314M/11	"	35.50	301/10	"	19.00
			314M/13	"	36.75			
			314M/15	"	39.25			
			314M/17	"	42.00			



## RESALE PRICE LIST — Continued

PAGE 20 (Continued)		Each	PAGE 23 (Continued)		Each	PAGE 28 (Continued)		Each
302/10	Lemaire	\$28.00	6250	Busch Rifle Range	\$87.00	7850/3 1/2"	Round Reader	\$3.20
303/10	"	45.00	6240	Busch Lightweight Prism	54.00	21966/55mm	" "	2.10
305/306/10	"	30.75	6256	Busch Ship's	63.00	21966/70mm	" "	2.70
<b>"EXTRAS" FOR ABOVE</b>								
ADDITIONAL FOR "12 LENSES"								
On 10, 11, 13, or 15 Ligne Glasses			7.00					
ADDITIONAL FOR JOINTED BARS								
On Brass Glasses			6.50					
On Aluminum Glasses			9.50					
<b>PAGE 21 ACHROMATIC HAND TELESCOPES</b>			<b>PAGES 24 &amp; 25 ASTRONOMICAL TELESCOPES</b>					
7821/10	Telescope	\$6.25	5300F/3"	Selsi E. Vion	\$280.00	21966/85mm	" "	3.40
7821/12	"	7.25	5801F/3"	" " "	280.00	1651/3"	Rectangular Reader	2.10
7821/14	"	8.50	5802/2 1/4"	" " "	138.00	1651/3 1/2"	" "	2.60
7821/16	"	10.75	5810/3"	" " "	325.00	1651/4"	" "	3.20
7821/19	"	14.50	5842/3 1/2"	" " "	740.00	1654/3"	" "	4.20
7821/22	"	23.75	5864/1 5/8"	" " "	61.00	1654/3 1/2"	" "	4.80
7821/25	"	33.50	5866/2"	" " "	86.00	1654/4"	" "	6.00
7822/10	"	7.00	5868/2 1/4"	" " "	127.00	1654/4 1/2"	" "	7.20
7822/12	"	8.00	5865/1 5/8"	" " "	61.00	18277/3"	" "	2.30
7822/14	"	9.50	5867/2"	" " "	86.00	18277/3 1/2"	" "	2.90
7822/16	"	12.00	5869/2 1/4"	" " "	127.00	18277/4"	" "	3.70
7822/19	"	16.00	<b>PAGE 26 ASTRONOMICAL TELESCOPES</b>			18206/3"	" "	4.50
7822/22	"	26.00	6260/3"	Busch	\$300.00	18206/3 1/2"	" "	5.00
7822/25	"	37.25	6264/2 3/4"	"	225.00	18206/4"	" "	6.30
17248/10	"	7.50	6270/18mm	Terr. Eyepiece	25.00	18206/4 1/2"	" "	7.50
17248/12	"	8.50	6270/22mm	" "	27.50	1616/4 1/2"	Stand Reader	3.00
17248/14	"	10.00	6270/27mm	" "	35.00	21727/3"	" "	8.00
17248/16	"	12.50	6271/7mm, 9mm, 12.5mm, 18mm	Cel. Eyepiece	12.00	21727/3 1/2"	" "	9.00
17248/19	"	16.25	6272/6mm, 7mm, 9mm, 12.5mm	Cel. Eyepiece	23.00	21727/4"	" "	10.00
17248/22	"	28.00	6274	Ocular Prism	18.00	21727/4 1/2"	" "	12.00
17248/25	"	40.00	6275	Zenith Prism	61.50	1691	Reader Stand	3.00
17249/10	"	8.75	<b>PAGE 27 TRIPODS AND CLAMPS</b>			1692	Reader Rack	.80
17249/12	"	10.00	6340	Metal Tripod	\$2.25	<b>PAGE 29 REDUCING GLASSES, CLAUDE LORRAINE MIRRORS, CAMERA LUCIDA</b>		
17249/14	"	11.50	6341	" "	2.75	20419/2"	Reducing Glass, Mounted	\$1.50
17249/16	"	14.00	6342	" "	3.50	20419/2 1/2"	" "	1.90
17249/19	"	18.25	6349	" "	4.25	20419/3"	" "	2.50
17249/22	"	31.00	6350	" "	5.50	20419/3 1/2"	" "	3.20
17249/25	"	44.00	6368	" "	2.40	20419/4"	" "	4.40
20522/10	"	5.75	6369	" "	2.90	20419/4 1/2"	" "	5.60
20522/12	"	6.50	6370	" "	3.60	1655/3"	" "	4.75
20522/14	"	7.50	6367	" "	5.50	1672/45mm	" "	1.30
20522/16	"	9.75	6364	" "	6.00	20447/38mm	" "	Unmtd. .45
26224/6X	Megaphos Monocular	10.50	6372	Lightweight Tripod	6.50	20448/42mm	" "	.55
26359/8X	Maxim Monocular	12.00	1261	Wood Tripod	15.00	20449/50mm	" "	.65
<b>PAGE 22 ACHROMATIC TELESCOPES</b>			1262	" "	24.00	20507	Claude Lorraine Mirrors	
5880	Rifle Range	\$34.50	7051D	Metal Clamp	5.25	3 1/8" x 4 1/2"	"	4.50
5882	Extra Eyepiece	15.00	<b>PAGE 28 READING GLASSES &amp; STANDS</b>			4 1/4" x 5 1/8"	"	6.30
5878	Rifle Range	23.50	1641/2"	Round Reader	\$ .80	5 1/8" x 6 1/8"	"	8.25
21921	" "	27.00	1641/2 1/2"	" "	1.00	5 1/8" x 7 1/4"	"	9.50
20474	" "	46.00	1641/3"	" "	1.25	6 1/8" x 8 1/8"	"	14.00
21941	" "	32.00	1641/3 1/2"	" "	1.40	10845	Camera Lucida	21.00
19902	Ship's	53.50	1641/4"	" "	2.00	<b>PAGE 30 BUSCH READERS &amp; MAGNIFIERS</b>		
1226	"	39.00	1641/4 1/2"	" "	2.70	8171/55mm	Round Reader	\$3.00
<b>PAGE 23 ACHROMATIC TELESCOPES</b>			1641/5"	" "	3.50	8171/70mm	" "	3.50
6248	Busch Rifle Range	\$51.00	1650/6"	" "	9.50	8171/85mm	" "	4.00
6249	" " "	60.00	7850/2 1/2"	" "	1.75	8171/100mm	" "	5.00
			7850/3"	" "	2.40	8171/115mm	" "	6.30
						8171/130mm	" "	8.50
						8175/55mm	" "	4.00
						8175/70mm	" "	5.00
						8175/85mm	" "	6.00

