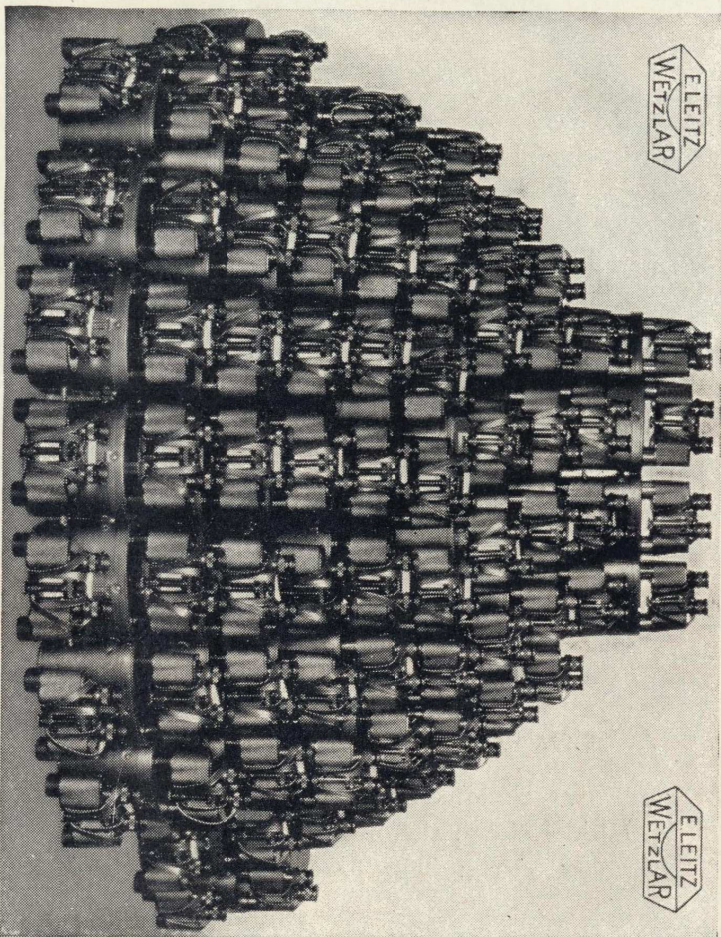


E. LEITZ
WETZLAR



A lot of LEITZ Binoculars BINUXIT, part of an extensive shipment made to the U. S. Coast Guard.

E. LEITZ, INC.,

60 East 10th St.

New York, N. Y.

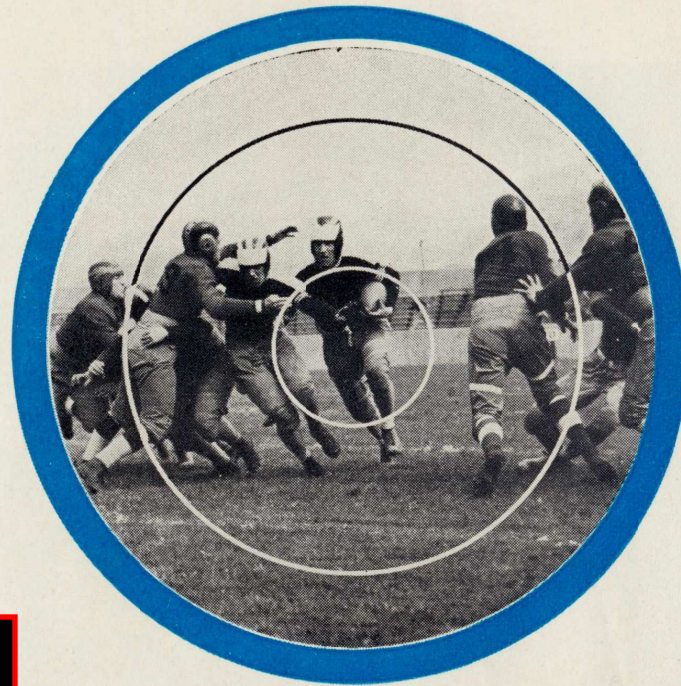
LEITZ Binoculars

LEITZ Binoculars have been for years, and are today, the choice of a discriminating clientele which has come to recognize the unexcelled optical and mechanical qualities identified with LEITZ products. LEITZ Binoculars are endowed with the same degree of precision for which the LEICA camera and LEITZ microscopes have become famous the world over. Because of an ever-increasing demand for field glasses to suit every possible purpose, the Leitz Works were prompted to enlarge their line of binoculars considerably.

This folder briefly describes a selection of the most popular models of the great variety of LEITZ glasses. It confines itself solely to the listing of those glasses which embody the central focusing adjustment feature. For the compensation of the difference in the user's eyes, one ocular is supplied with an independent focusing collar, thus adapting the glasses to the individual use of various visions. Each glass is furnished with an appropriate neck-strap, and is sold with a form-fitting, high-grade, brown cowhide case with shoulder-strap.

The quality of a pair of binoculars is dependent upon two characteristics, viz., the complete elimination of optical error and the precision of mechanical workmanship. **These characteristics are expertly achieved in all LEITZ glasses.** Through perfect optical correction, brilliant sharpness in definition of image is rendered over the entire area of the field of view, and the high degree of mechanical workmanship assures unfailing and continued service for all LEITZ glasses.

One particular feature of the greatest importance lies in the fact that the LEITZ Binoculars are con-



MB

COMPARISON OF FIELD OF VIEW.

Small inner circle: ordinary 4X non-prismatic glass;

Middle circle: standard 8X prism binocular.

Complete circle: Leitz 8X **wide-angle** binoculars.

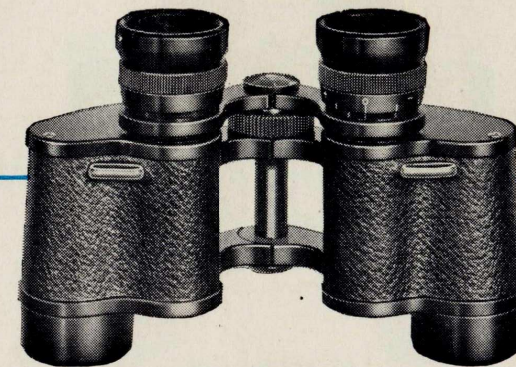
Refinement of
Optical and Mechanical Construction
Establishes The Supremacy of
LEITZ BINOCULARS

structed in such a manner that the entrance of dust and moisture to the interior is completely eliminated. The stereoscopic effect secured is strikingly pronounced.

When making a selection, special attention should be paid to the optical specifications (magnification, light-transmission, and field of view) since upon these depend the value of the glass for the intended purpose. If the glasses are desired mainly for use in failing light or at night, preference should be given to those glasses which are endowed with a high degree of light-transmitting power.

Particular reference is made to the new series of LEITZ SPECIAL and WIDE-ANGLE PRISM BINOCULARS. Their high numerical performance is further increased by the enlarged field of view, and this brings with it the great advantage of enabling the eye to locate an object much more quickly and to follow a swiftly moving object as is occasioned at races and other sports.

LEITZ Binoculars have proved and definitely established their superiority throughout a period of nearly four decades. A great number of them has been supplied to the United States Government for use in the army, navy, and coast-guard units, and they have successfully passed all of the critical tests necessary to meet government requirements. LEITZ Binoculars have accompanied leading explorers and scientists to all corners of the earth, successfully withstanding all known adverse climatic and atmospheric conditions.



1/3 actual size

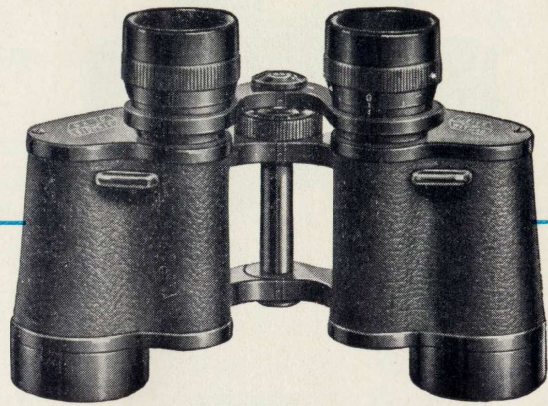
MB

BINOLIT 6 X 24

AN ALL-AROUND BINOCULAR

of average light transmission. Its moderate size and weight make it an ideal glass for travelers, sportsmen and hikers. It is also recommended for studying bird and wild animal life.

Code Word	Magnification	Objective Diameter mm	Exit Pupil mm	Light Transmission	Field of View		Weight without case, ozs.	Price \$
					Angular	In Yds. at 1000 Yds.		
BINOLIT	6X	24	4	16	8.5°	150	15	68.00



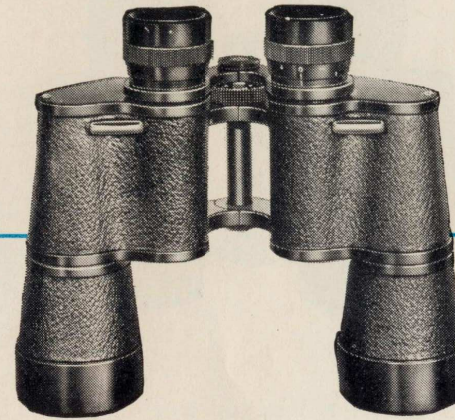
1/3 actual size

BIDOXIT 6 X 30

THE UNIVERSAL BINOCULAR

of increased light transmission. Especially recommended for hunting, navigation, sport. Due to its high light-transmitting power, this binocular is used with success in advanced dusk and hazy atmosphere—a feature very important to hunters and for use at sea.

Code Word	Magnification	Objective Diameter mm	Exit Pupil mm	Light Transmission	Field of View		Weight without case, ozs.	Price \$
					Angular	In Yds. at 1000 Yds.		
BIDOXIT	6X	30	5	25	8.5°	150	19	75.00



1/4 actual size

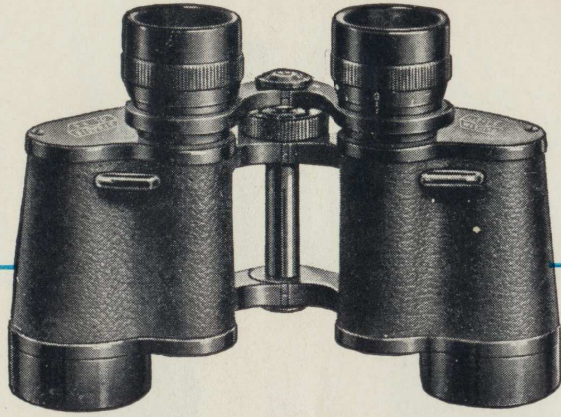
FOREST 6 X 42

BINOCULAR OF HIGH LIGHT TRANSMISSION FOR HUNTING AND USE AT SEA.

This binocular represents a special model of increased light transmission and consequently is of great value to hunters in advanced dusk and during night. FOREST is equally well recommended as NIGHT GLASS FOR USE AT SEA.

Code Word	Magnification	Objective Diameter mm	Exit Pupil mm	Light Transmission	Field of View		Weight without case, ozs.	Price \$
					Angular	In Yds. at 1000 Yds.		
FOREST	6X	42	7	49	7°	122	26½	110.00

MB



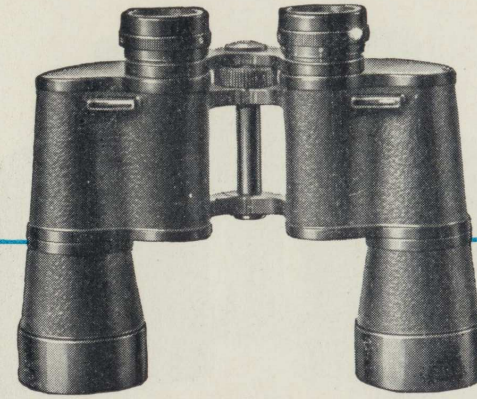
1/3 actual size

BINUXIT 8 X 30

HIGH POWER UNIVERSAL BINOCULAR.

Its increased power combined with a high degree of light transmission and wide field of view make this binocular the favorite glass at sea, for hunting, on the turf, for motor tourists, travelling—in fact, for sport in general.

Code Word	Magnification	Objective Diameter mm	Exit Pupil mm	Light Transmission	Field of View		Weight without case, ozs.	Price \$
					Angular	In Yds. at 1000 Yds.		
BINUXIT	8X	30	3.75	14	8.5°	150	20	82.00



1/4 actual size

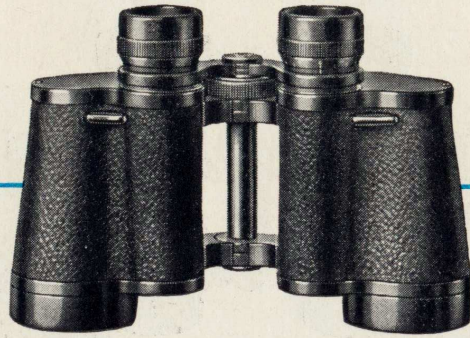
FORSTA 8 X 42

HIGH-POWER BINOCULAR OF INCREASED LIGHT TRANSMISSION.

Like the FOREST, the FORSTA is of eminent advantage to hunters in advanced dusk and during night. Due to its higher magnification than FOREST, and its comparatively high light transmission, it is likewise well suited as NIGHT GLASS FOR USE AT SEA.

Code Word	Magnification	Objective Diameter mm	Exit Pupil mm	Light Transmission	Field of View		Weight without case, ozs.	Price \$
					Angular	In Yds. at 1000 Yds.		
FORSTA-	8X	42	5.25	27.6	6.3°	110	26½	115.00

MB



1/4 actual size
eye leather &c

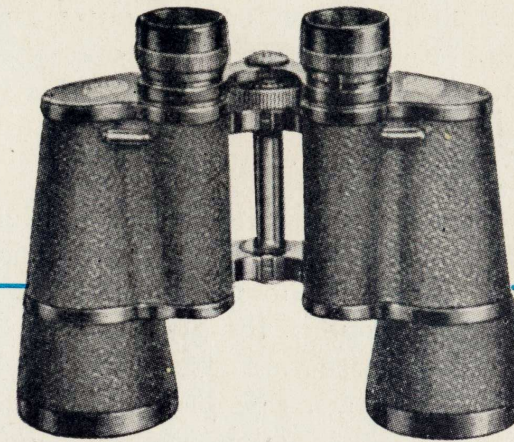
CAMPARIT 10 X 40

A NEW SERIES OF WIDE-FIELD BINOCULARS HAVING INCREASED LIGHT TRANSMISSION.

The extreme wide field, enhanced light transmission and high power render these binoculars especially suitable for use at sea and aviation, even under most unfavorable light conditions. The extreme wide field makes it easy to follow moving objects.

(The other two models, not illustrated, resemble in appearance the binocular MARDIXIT, shown on page 11.)

Code Word	Magnification	Objective Diameter mm	Exit Pupil mm	Light Transmission	Field of View		Weight without case, ozs.	Price \$
					Angular	In Yds. at 1000 Yds.		
CAMPARIT	10X	40	4	16	7.3 °	128	36	155.00
CAMPOMARIT	12X	50	4.17	17.4	5.75°	100	41	160.00
CAMPOFORTIT	15X	60	4	16	4.65°	81	54	190.00



1/4 actual size

MARDIXIT 10 X 50

NIGHT GLASSES OF EXTREME LIGHT TRANSMISSION.

The four binoculars listed below are endowed with a high degree of light transmission and therefore known as NIGHT GLASSES and as such preferred by hunters, forest inspectors, aviators, navy officers, etc. They are of convenient size and relatively light in weight.

(While we illustrate only one binocular of this series the other models resemble in appearance the one shown.)

Code Word	Magnification	Objective Diameter mm	Exit Pupil mm	Light Transmission	Field of View		Weight without case, ozs.	Price \$
					Angular	In Yds. at 1000 Yds.		
MARSEPTIT	7X	50	7.14	51	7°	122	39½	137.00
MAR-OCTIT	8.3X	60	7.23	52	6°	107	51	175.00
MARDIXIT	10X	50	5	25	5°	87.5	39½	145.00
MAR-DOCIT	12X	60	5	25	4.3°	75	51	175.00