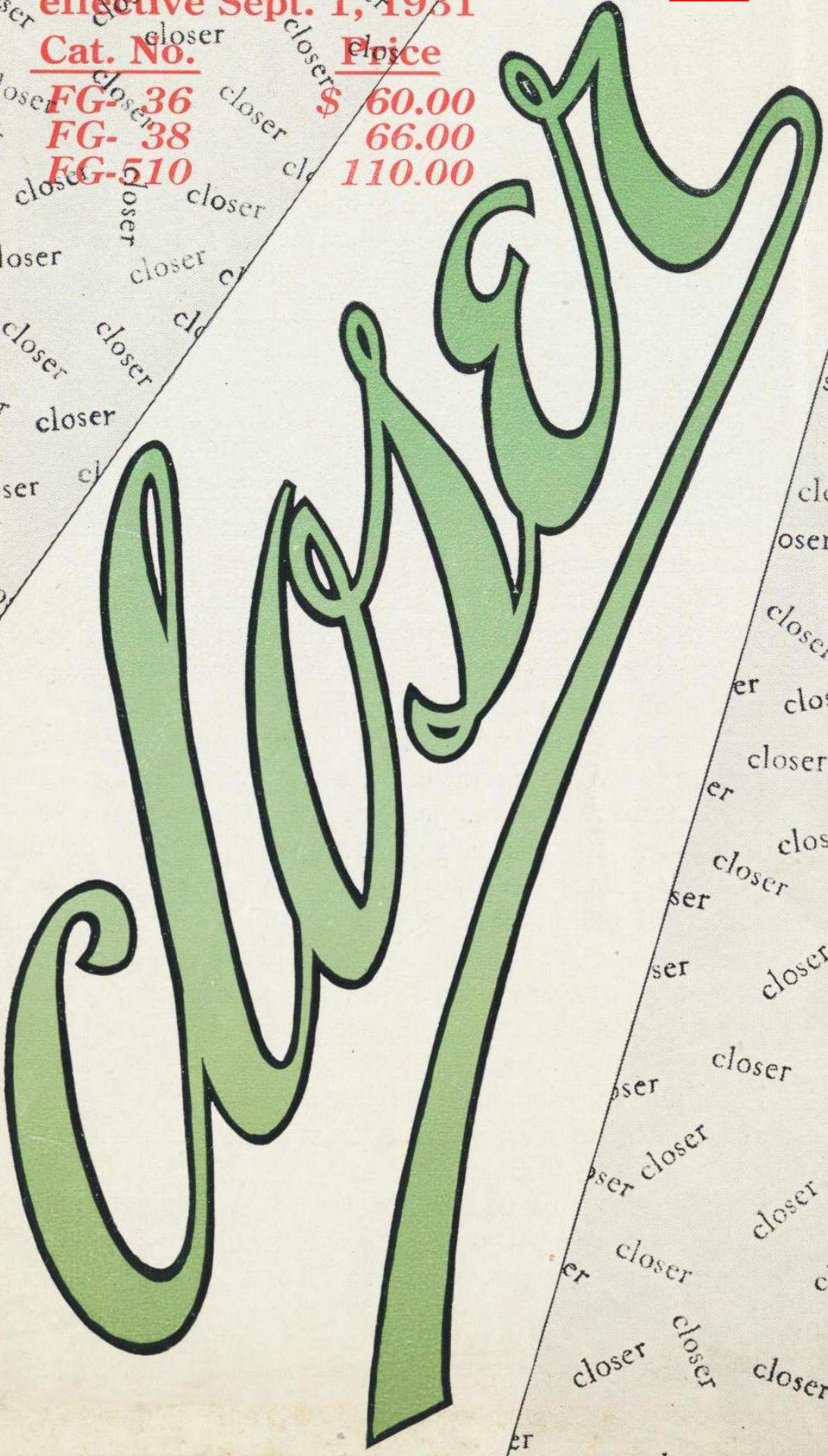


NEW PRICES

on Bausch & Lomb Binoculars
effective Sept. 1, 1931



<u>Cat. No.</u>	<u>Price</u>
FG-36	\$ 60.00
FG-38	66.00
FG-510	110.00





DO you want to enjoy the great outdoors more keenly? When the ponies strain neck-and-neck on the farthest part of the track—when the pigskin passes like a flash across the field—you want to “bring in” the action, see it more in detail, make it appear *closer!* And you can do it with a B & L Binocular.

Today we insist on getting more out of life. We are not satisfied with travelling at less than automobile speed; of communicating at the rate of letters if we can telephone. Nor is the normal range of the unaided eye enough when interesting things are to be seen. For tourist, camper and sports fan binoculars are necessities.

The fact that you want a binocular makes it necessary to think about its power. It is not always best to buy the most powerful glass, for increase in magnification means decrease in ease of operation.

The 6 × glasses with either 25 or 30 mm objectives provide excellent facilities for observation with great illumination of the image. But if you desire a greater magnification you might consider the two eight-power glasses offered. The 25-mm glass combines increased magnification with lightness of construction, making it adaptable for the hiker and mountain climber. But $2\frac{1}{4}$ ounces heavier, the 30-mm glass is a splendid binocular for distance observation. This glass, owing to its wider objectives, does not sacrifice illumination to attain increased power. Our two ten-power binoculars offer greater power than do the ordinary models.

The design of the Stereo Prism Binocular illustrated shows how the prisms bend the light rays back upon themselves, making a very compact glass with



Bausch & Lomb of Ro

closer!



Sectional View, Showing Prism Construction and Path of Light Ray

evenness of illumination and clarity of definition not obtainable in the old style straight type.

Catalog numbers and prices of a complete line follow:

<i>Cat. No.</i>	<i>Power</i>	<i>Diam. of Objectives</i>	<i>Price</i>
FG 26	6×	25 mm	\$53.00
FG 36	6×	30 mm	66.00
FG 57	7×	50 mm	95.00
FG 28	8×	25 mm	60.00
FG 38	8×	30 mm	72.00
FG 310	10×	30 mm	85.00
FG 45	10×	45 mm	95.00
FG 510	10×	50 mm	100.00

Monoculars

FG 36 M	6×	30 mm	27.00
FG 28 M	8×	25 mm	27.00

chester, N. Y.—First to Introduce



MB



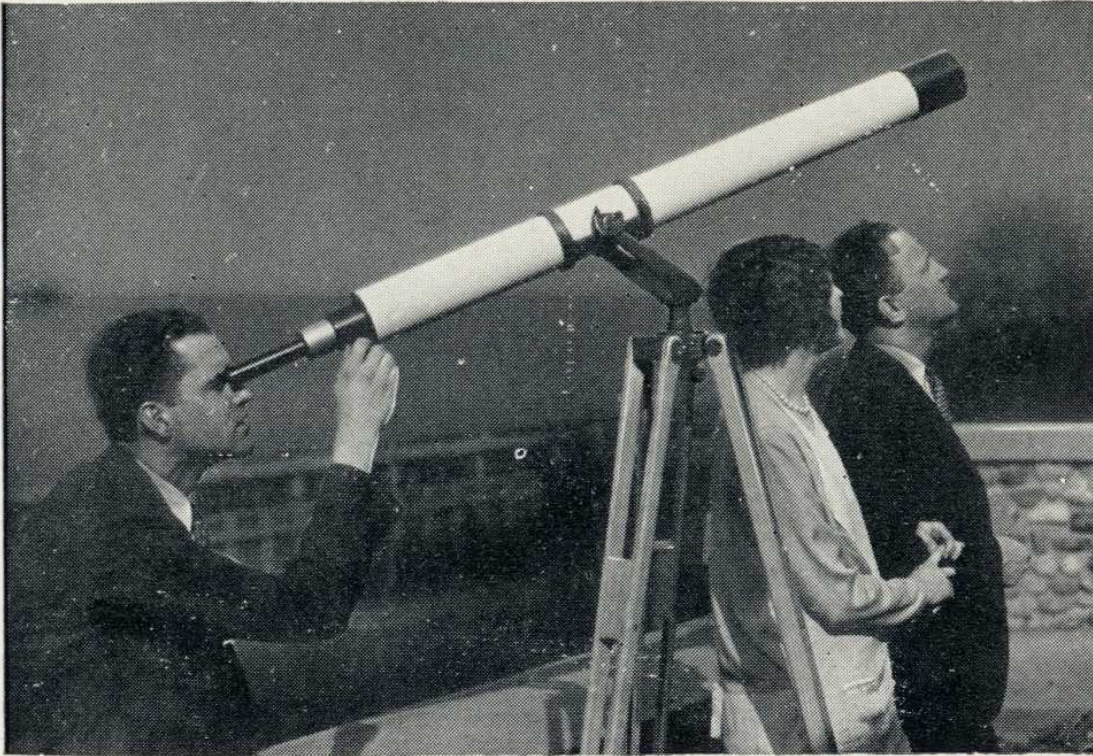
Bausch & Lomb Stereo Binocular

YOUR attention is especially called to our 8 × 30 mm Stereo Binocular.

This glass is the result of efforts to overcome two handicaps which usually accompany increase in power; viz., lessened illumination and greater weight. That we have accomplished this we believe you will readily agree when you look through this binocular with its large eyepieces and note the relief in which objects stand out, the clarity of the field clear to the edge of the objective, the splendid manner in which the large objectives admit more light. The lightness and general excellence of construction and workmanship will convince you that this glass will really satisfy your requirements.

A complete catalog of Bausch & Lomb Stereo Binoculars will be sent you on request.

Binoculars in America



Bausch & Lomb Telescopes for Added Enjoyment of Life

YOUR summer home, in the mountains or at the sea, is not complete without a telescope. Greater desire for instruments that will bring into closer view distant sporting events and scenes, and the increasing interest in astronomy render the telescope an important item in the appreciation and enjoyment of life.

There are three models of observation telescopes and one astronomical model. These have been constructed to cover the needs of telescope users in the most effectual manner. The three observation telescopes are equipped with prism erection systems which cause the object to appear in proper position instead of inverted.

For recreation and education the telescope has limitless possibilities.

The prices range from \$235.00 to \$1150.00, the latter applying to our Equatorial Telescope.

Complete catalog furnished on request.

*Bausch & Lomb of Rochester—First
to Introduce Binoculars in America.*

You've Been Looking for the Sport Glass



MB

OFTEN you have a longing for a binocular that can be slipped in your pocket or bag, that is light and efficient, that can be made your companion without being an intruder.

If you've wished for such a glass, the Sport Glass is exactly what you want.

It's so light and efficient, has a width of field of 84 feet to a hundred yards, and can always be brought into use so quickly and conveniently. For the theater and for sport events the Sport Glass is just the thing. Its smart black model in a sole leather case that slips out of your pocket so easily, and slithers in when you're through using it; or the black and gold in a black silk bag with a tassel that adds an enviable swagger effect; or the richness of the pigskin model in its pigskin case; or the irresistible Vanity model, a Sport Glass in an attractive bag with Vanity features,—every one of these the last word in snappiness and sophistication.

Ask to see these. We know how pleasant a surprise awaits you.